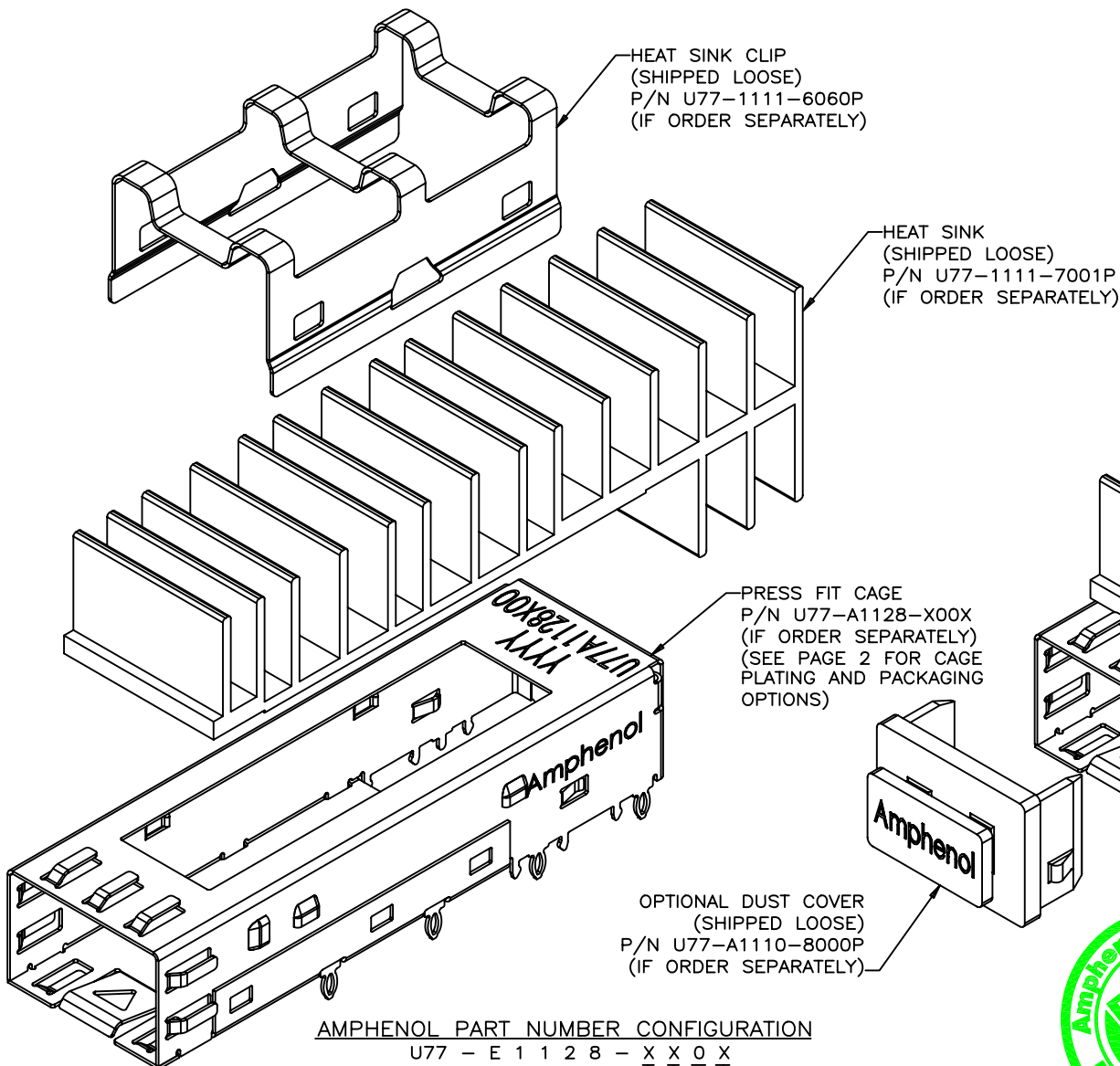


REVISIONS				
SYM	ZONE	ECN, ERN NO.	DATE	APPRD.
C		UPDATED	JUL17/07	
D		UPDATED	OCT04/07	
E		UPDATED	OCT17/07	

THIS IS A CAD DRAWING. DO NOT MANUALLY REVISE.



AMPHENOL PART NUMBER CONFIGURATION
U77 - E 1 1 2 8 - X X 0 X

- PACKAGING
1 = TRAY PACKAGING
T = TAPE & REEL PACKAGING (FOR CAGE ONLY)
- OPTIONAL DUST COVER
0 = NO DUST COVER
D = WITH DUST COVER (SHIP LOOSE)
- CAGE PLATING
1 = TIN PLATING
2 = NICKEL PLATING



MATERIAL (RoHS COMPLIANCE):

CAGE:
COPPER ALLOY
PLATING OPTION 1:
100µ" [2.54 µm] MIN. TIN PLATING OVER
50µ" [1.27 µm] MIN. NICKEL UNDER
PLATING.
PLATING OPTION 2:
100µ" [2.54 µm] MIN. NICKEL PLATING.
HEAT SINK:
ALUMINUM, BLACK ANODIZING COATING.
HEAT SINK CLIP:
STAINLESS STEEL.
DUST COVER:
THERMOPLASTIC, COLOR BLACK.
PACKAGING:
TRAY PACKAGING FOR HEAT SINK AND CLIP
PROVIDED AS A KIT.
TEMPERATURE RANGE:
-40°C TO +85°C

DRAWN J.SI	DATE 2006/05/19	Amphenol Canada Corp.		
DESIGNED J.SI	2006/05/19			
CHECKED X	X	TITLE		
		SFP SINGLE CAGE WITH HEAT SINK AND CLIP (8 PRESS FIT / 12 EMI PINS ON CAGE)		
DWG. APPRD.		DWG A	DRAWING NO. P-U77-E1128-XX0X	REV. E
ENG. REL. NO.				
REF. X				
DIMENSIONS ARE IN INCHES (mm)	CODE ID. NO. 03554	SCALE 2:1	WT.	SHEET 1 OF 4

THIS DOCUMENT CONTAINS PROPRIETARY INFORMATION AND SUCH INFORMATION MAY NOT BE DISCLOSED TO OTHERS FOR ANY PURPOSE OR USED FOR MANUFACTURING PURPOSES WITHOUT WRITTEN PERMISSION FROM AMPHENOL CANADA CORP.

CAGE P/N CONFIGURATION (IF ORDER SEPARATELY)

U77 - A 1 1 2 8 - X 0 0 X

CAGE PLATING

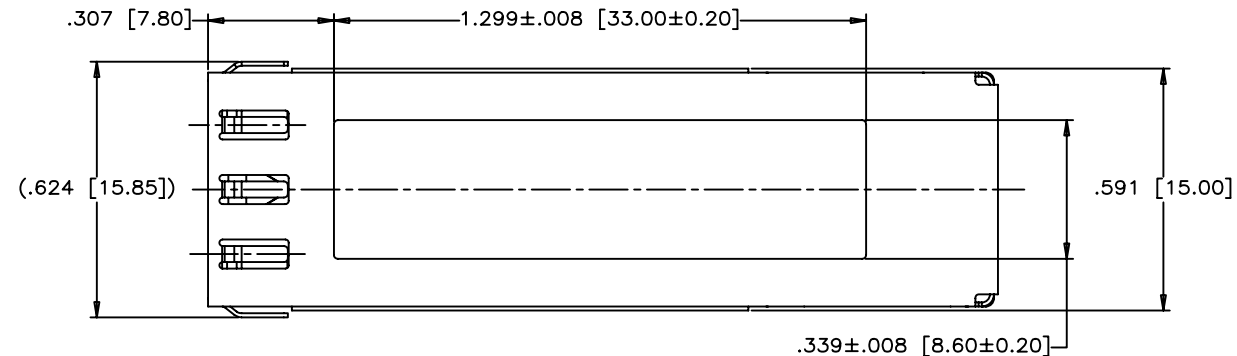
1 = TIN PLATING
2 = NICKEL PLATING

PACKAGING

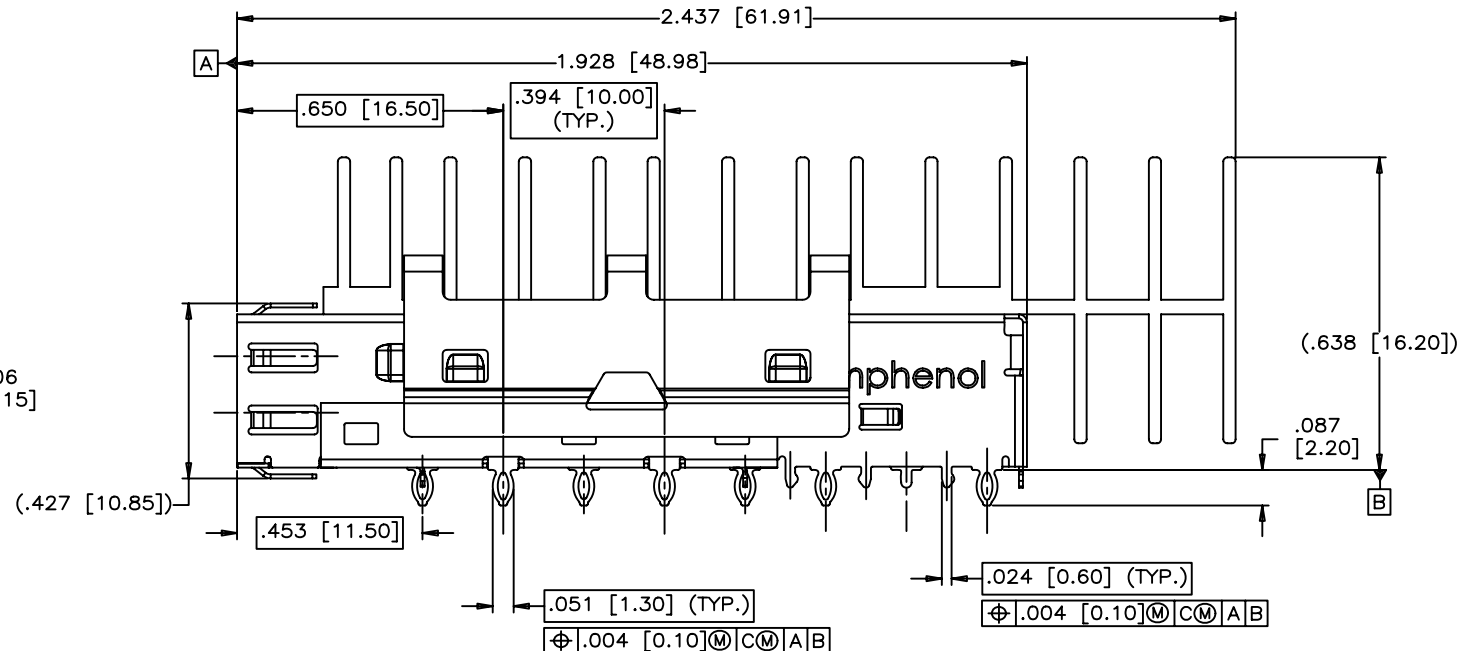
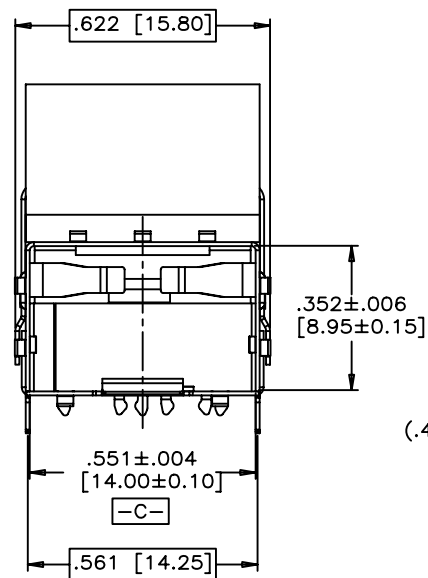
1 = TRAY PACKAGING
T = TAPE & REEL PACKAGING

REVISIONS				
SYM	ZONE	ECN, ERN NO.	DATE	APPRD.
C		UPDATED	JUL17/07	
D		UPDATED	OCT04/07	
E		UPDATED	OCT17/07	

THIS IS A CAD DRAWING. DO NOT MANUALLY REVISE.



TOP VIEW (CAGE SHOWN ONLY)



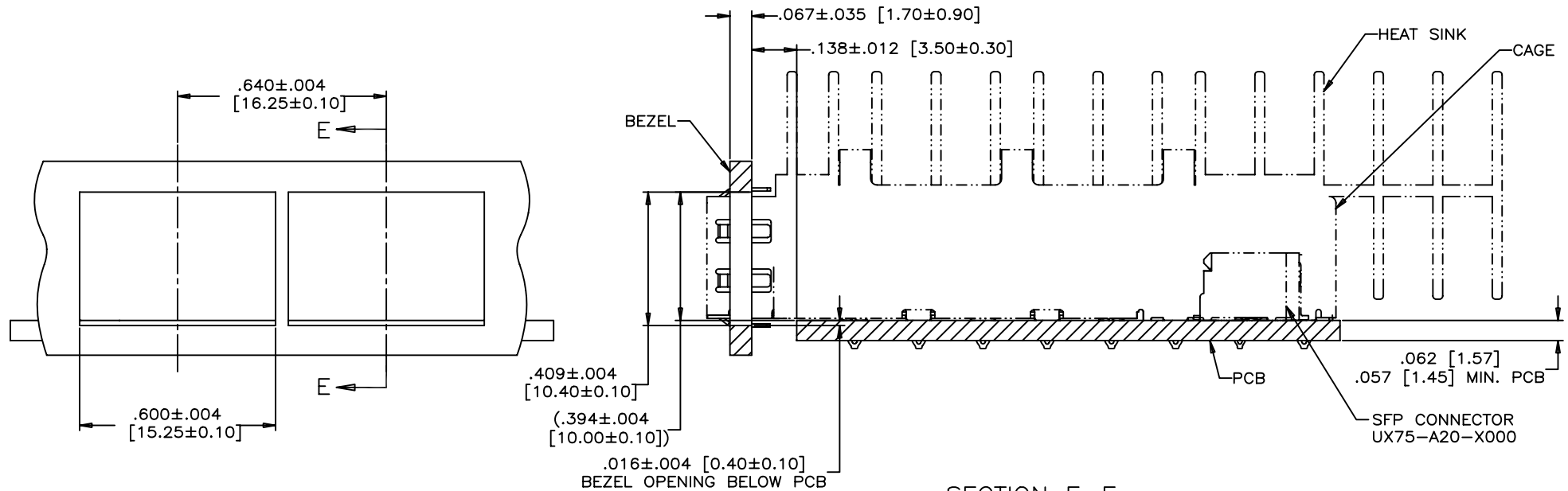
DRAWN	J.SI	DATE	2006/05/19
DESIGNED	J.SI	DATE	2006/05/19
CHECKED	X		
DWG. APPRD.			
ENG. REL. NO.			
REF.	X		
DIMENSIONS ARE IN	INCHES (mm)	CODE ID. NO.	03554

Amphenol Canada Corp.			
TITLE			
SFP SINGLE CAGE WITH HEAT SINK AND CLIP (8 PRESS FIT / 12 EMI PINS ON CAGE)			
DWG	A	DRAWING NO.	P-U77-E1128-XX0X
REV.	E		
SCALE	2:1	WT.	
SURF.			
SHEET	2	OF	4

THIS DOCUMENT CONTAINS PROPRIETARY INFORMATION AND SUCH INFORMATION MAY NOT BE DISCLOSED TO OTHERS FOR ANY PURPOSE OR USED FOR MANUFACTURING PURPOSES WITHOUT WRITTEN PERMISSION FROM AMPHENOL CANADA CORP.

REVISIONS				
SYM	ZONE	ECN, ERN NO.	DATE	APPRD.
C		UPDATED	JUL17/07	
D		UPDATED	OCT04/07	
E		UPDATED	OCT17/07	

THIS IS A CAD DRAWING. DO NOT MANUALLY REVISE.



RECOMMENDED BEZEL DESIGN (ONE SIDE CAGE MOUNTING)

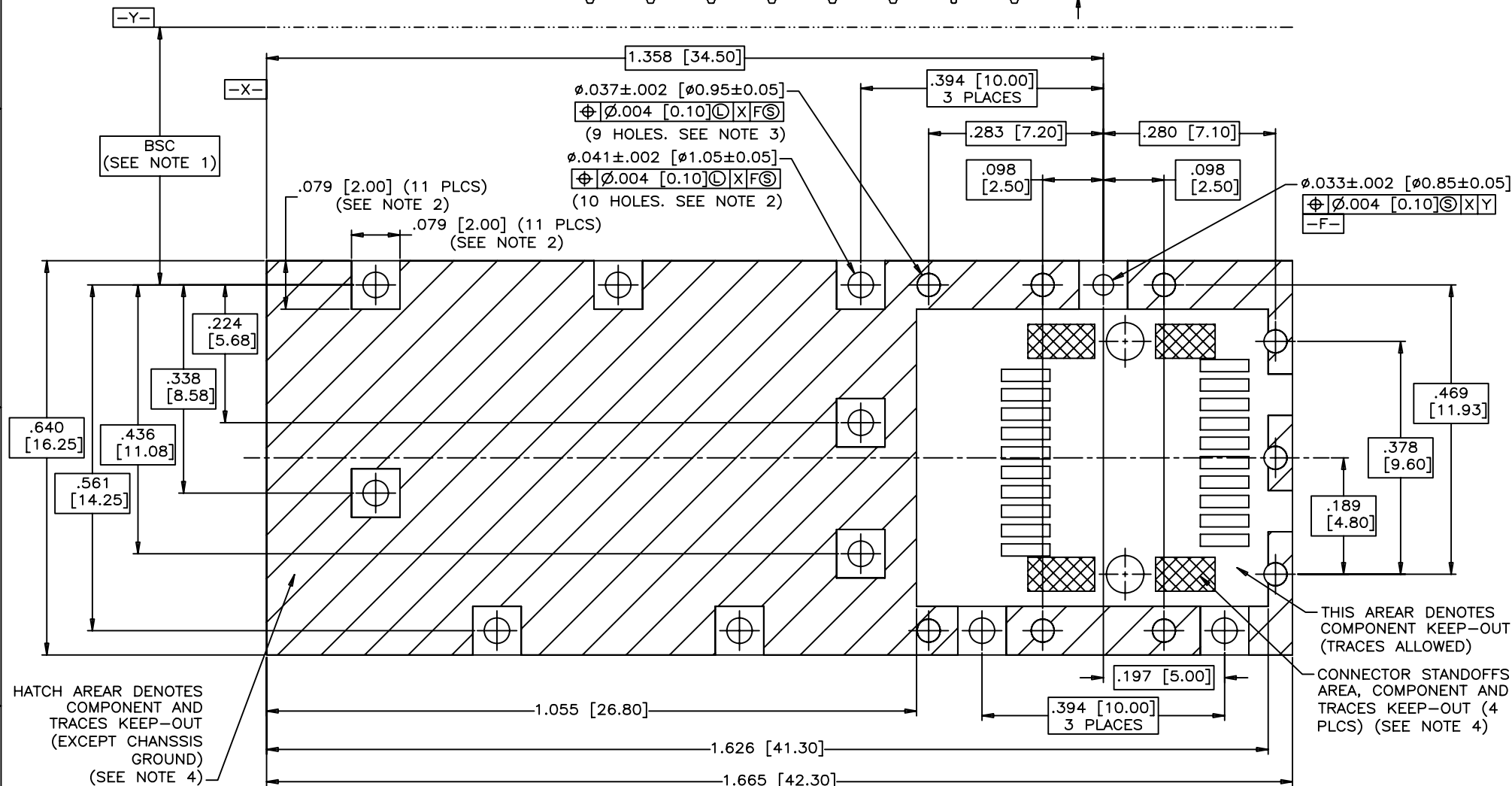
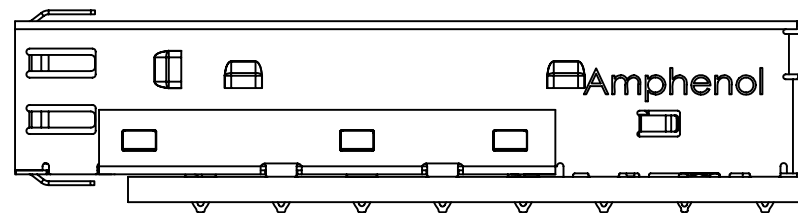
THIS DOCUMENT CONTAINS PROPRIETARY INFORMATION AND SUCH INFORMATION
MAY NOT BE DISCLOSED TO OTHERS FOR ANY PURPOSE OR USED FOR MANUFACTURING
PURPOSES WITHOUT WRITTEN PERMISSION FROM AMPHENOL CANADA CORP.

DRAWN	J.SI	DATE	2006/05/19	Amphenol Canada Corp.	
DESIGNED	J.SI	DATE	2006/05/19		
CHECKED	X		X		
DWG. APPRD.				TITLE SFP SINGLE CAGE WITH HEAT SINK AND CLIP (8 PRESS FIT / 12 EMI PINS ON CAGE)	
ENG. REL. NO.					
REF.	X			DWG	DRAWING NO.
DIMENSIONS ARE IN	INCHES (mm)	CODE ID. NO.	03554	A	P-U77-E1128-XX0X
SCALE	2:1	WT.		SURF.	
					SHEET 3 OF 4

1. DATUM AND BASIC DIMENSIONS ESTABLISHED BY CUSTOMER
2. PADS AND VIAS ARE CHASSIS GROUND, 11 PLACES.
3. THRU HOLES, PLATING OPTIONAL.
4. SEE DRAWINGS P-UX75-A20-X000X FOR CONNECTOR PCB LAYOUT.

THIS IS A CAD DRAWING. DO NOT MANUALLY REVISE.

.062 [1.57]
57 [1.45] MIN. PCB



RECOMMENDED SFP HOST BOARD LAYOUT
(ONE SIDE CAGE MOUNTING)
(SCALE 4:1)

THIS DOCUMENT CONTAINS PROPRIETARY INFORMATION AND SUCH INFORMATION
MAY NOT BE DISCLOSED TO OTHERS FOR ANY PURPOSE OR USED FOR MANUFACTURING
PURPOSES WITHOUT WRITTEN PERMISSION FROM AMPHENOL CANADA CORP.

DRAWN	J.SI	DATE	2006/05/19		
DESIGNED	J.SI	DATE	2006/05/19		
CHECKED	X		X		
DWG. APPRD.					
ENG. REL. NO.					
REF.		X			
DIMENSIONS ARE IN		CODE ID. NO.			
INCHES [mm]		03554			
SCALE		2:1		WT. -----	
				SURF. -----	
				SHEET 4 OF 4	