

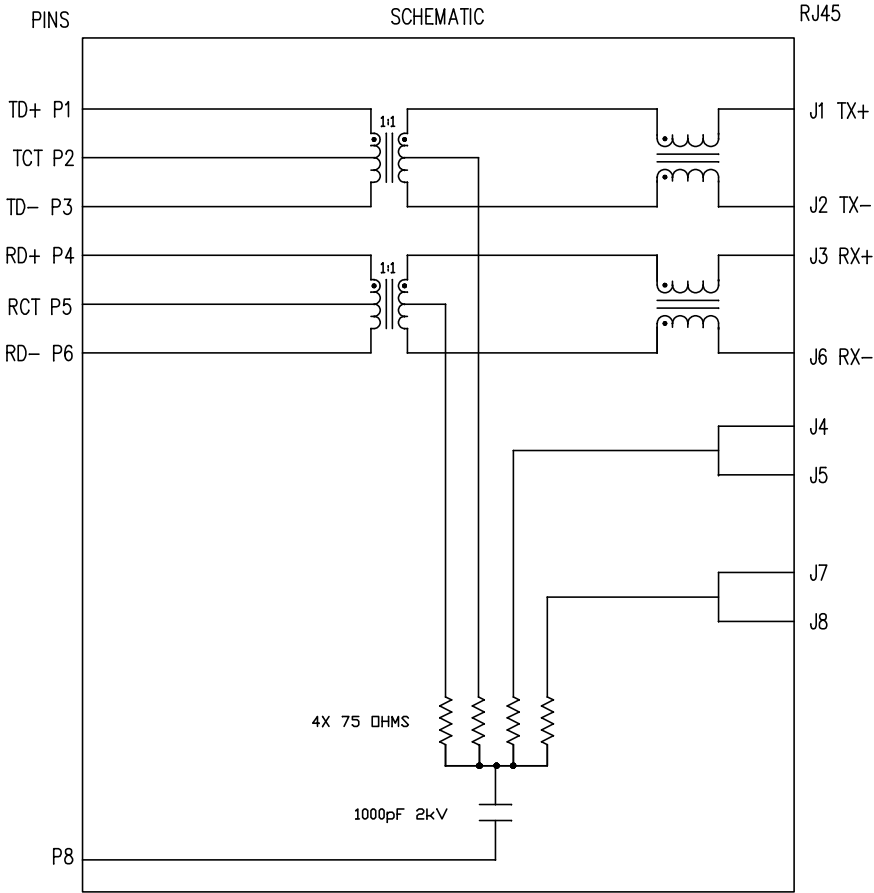
THE INFORMATION CONTAINED HEREIN IS CONSIDERED "PROPRIETARY" TO BEL FUSE INC. AND SHALL NOT BE COPIED, REPRODUCED OR DISCLOSED WITHOUT THE WRITTEN APPROVAL OF BEL FUSE INC.

RoHS  
2002/95/EC



ELECTRICAL CHARACTERISTICS @ 25°C

OPERATING TEMPERATURE RANGE:	: -40°C TO +85°C
1.0 TURNS RATIO: (P6-P5-P4) : (J6-J3)	: 1CT : 1CT ± 3%
(P3-P2-P1) : (J2-J1)	: 1CT : 1CT ± 3%
2.0 INDUCTANCE: (P6-P4)	: 350uH MIN. @ 0.1V, 100KHz, 8mA DC Bias
(P3-P1)	: 350uH MIN. @ 0.1V, 100KHz, 8mA DC Bias
3.0 LEAKAGE INDUCTANCE: P6-P4 (WITH J6 AND J3 SHORT)	: 0.3uH MAX. @ 1MHz
P3-P1 (WITH J2 AND J1 SHORT)	: 0.3uH MAX. @ 1MHz
4.0 INTERWINDING CAPACITANCE: (P6,P5,P4) TO (J6,J3)	: 40pF MAX @ 1MHz
(P3,P2,P1) TO (J2,J1)	: 40pF MAX. @ 1MHZ
5.0 DC RESISTANCE: (J6-J3)=(J2-J1)	: 1.2 ohms Max.
6.0 RETURN LOSS: (P6-P4)=100 OHMS AND (P1-P3)=100 OHM REF.	
1MHz TO 30MHz	: 18dB MIN.
60MHz TO 80MHz	: 12dB MIN.
NOTE: 100 OHMS CONNECTED TO (J2-J1) OR (J6-J3).	
7.0 DIELECTRIC WITHSTAND: (J1, J2) TO (P1, P3)	: 1500 Vrms
(J3, J6) TO (P4,P6)	: 1500 Vrms
8.0 INSERTION LOSS: RS=RL=100 ohms	
100KHz TO 100MHZ	: 1.1 dB TYP
9.0 RISE TIME: RS=100 OHMS AND RL = 100 OHMS	
OUTPUT VOLTAGE = 1 V peak	: 3.0 nS MAX
PULSE WIDTH= 112nS	: 3.0 nS MAX
10.0 CROSS TALK: 1MHz TO 100MHZ	: 40 dB TYP
11.0 COMMON TO COMMON MODE ATTENUATION: 30MHz TO 100MHZ	: 35dB TYP



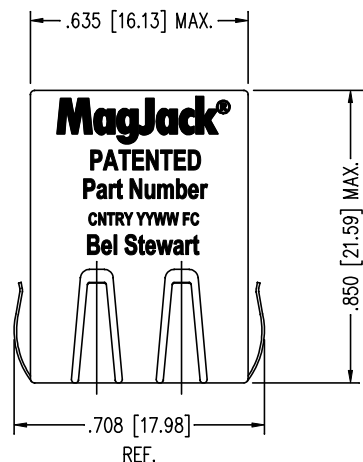
NOTES

1.0 PINS WITHOUT ELECTRICAL CONNECTION ARE OMITTED.

ORIGINATED BY	DATE	TITLE <b>MagJack®</b> 10/100BT TAB DOWN, SHIELDED PATENTED	PART NO. / DRAWING NO.	STANDARD DIM.		[ ] METRIC DIM. AS REFERENCE		 COMPONENTS FOR A CONNECTED PLANET
Bain Liu	09-03-09		SI-60118-F	TOL. IN INCH		UNIT : INCH [mm]	REV. : A0	
DRAWN BY	DATE		FILE NAME	.X		SCALE : N/A	SIZE : A4	
Bain Liu	09-03-09		SI-60118-F.DWG	.XX			PAGE : 2	
				.XXX	±0.005			

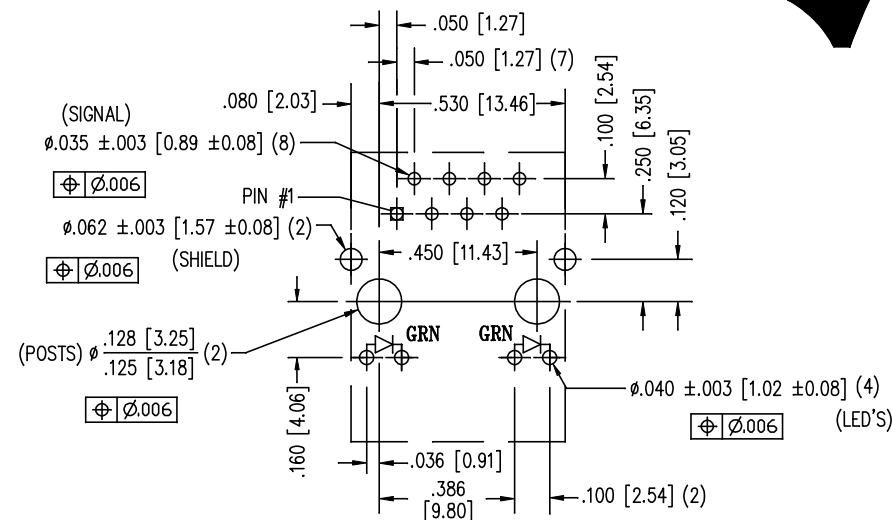
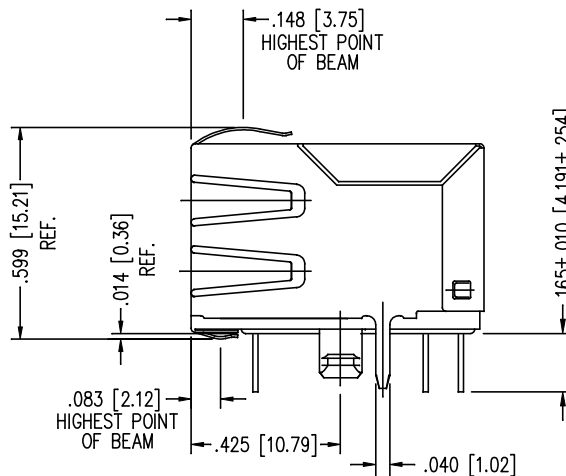
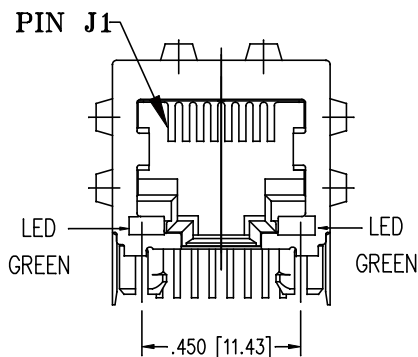
THE INFORMATION CONTAINED HEREIN IS CONSIDERED "PROPRIETARY" TO BEL FUSE INC. AND SHALL NOT BE COPIED, REPRODUCED OR DISCLOSED WITHOUT THE WRITTEN APPROVAL OF BEL FUSE INC.

RoHS  
2002/95/EC



LED SPECIFICATION			
STANDARD LED	WAVELENGTH	FORWARD V (MAX)	* (TYP)
GREEN	565 nm	2.5 V	2.1 V

\*WITH A FORWARD CURRENT OF 20 mA (TYP)



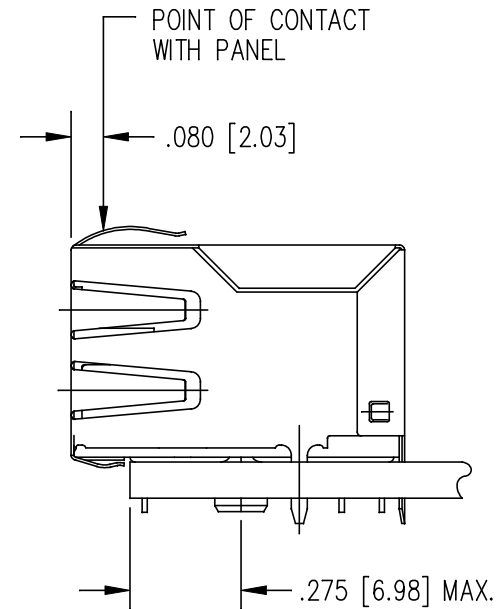
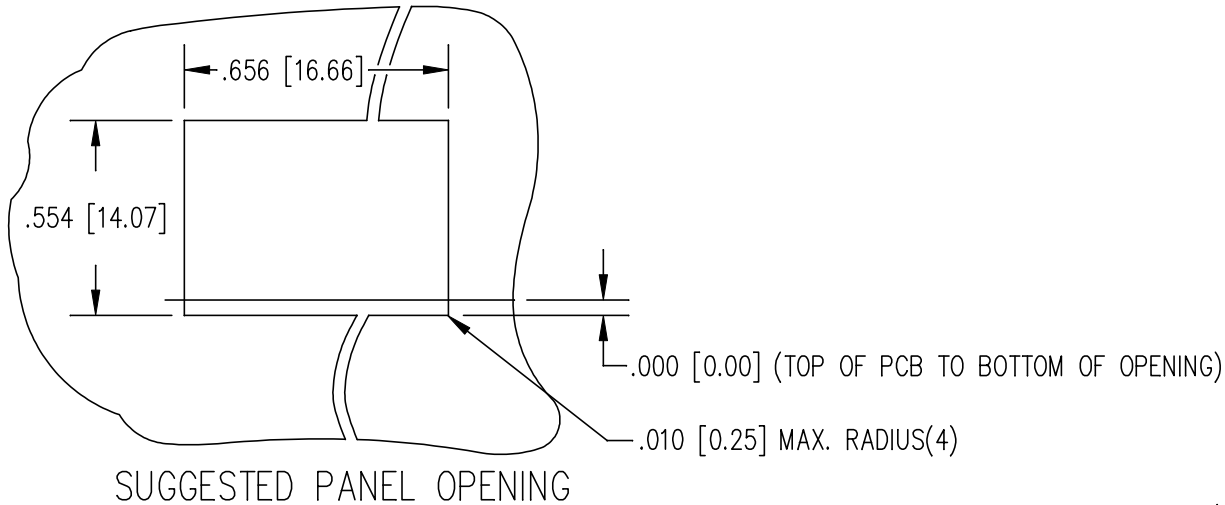
P.C.B. RECOMMENDED HOLE LAYOUT  
SEEN FROM COMPONENT SIDE

ALL CENTERLINE DIMENSIONS ARE BASIC.


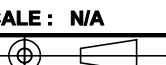
#### NOTES:

- CONNECTOR MATERIALS:  
HOUSING: THERMOPLASTIC UL94 V-0  
CONTACT/SHIELD: COPPER ALLOY  
SHIELD PLATING: NICKEL OR TIN  
CONTACT PLATING: SELECTIVE GOLD,  
50 MICRO-INCHES MIN. IN CONTACT AREA.
- PIN NOT ELECTRICALLY CONNECTED MAYBE OMITTED.  
SEE ELECTRICAL DRAWING FOR OMITTED PINS.
- TOLERANCES COMPLY WITH F.C.C. DIMENSION REQUIREMENTS.
- ALL TOLERANCES NOT OTHERWISE SPECIFIED TO BE ±.005 [0.13]
- REFLOW AND WAVE SOLDER COMPATIBLE -260°C FOR  
10 SECONDS MAX.

ORIGINATED BY		DATE	TITLE <b>MagJack®</b> 10/100BT TAB DOWN, SHIELDED PATENTED	PART NO. / DRAWING NO.		STANDARD DIM.		[ ] METRIC DIM. AS REFERENCE		<b>bel</b> COMPONENTS FOR A CONNECTED PLANET
Bain Liu		09-03-09		SI-60118-F		TOL. IN INCH		UNIT : INCH [mm]	REV. : A0	
DRAWN BY		DATE		FILE NAME		.X .XX .XXX		SCALE : N/A	SIZE : A4	
Bain Liu		09-03-09		SI-60118-F.DWG		±0.005			PAGE : 3	



1. THE SUGGESTED PANEL OPENING IS INTENDED TO GIVE THE USER THE ABILITY TO HAVE REASONABLE JACK / PANEL CLEARANCES YET MAINTAIN RELIABLE GROUNDING CAPABILITY.
2. ALL TOLERANCES NOT OTHERWISE SPECIFIED TO BE  $\pm 0.005$  [0.13]

ORIGINATED BY	DATE	TITLE	PART NO. / DRAWING NO.	STANDARD DIM.		[ ] METRIC DIM. AS REFERENCE		 COMPONENTS FOR A CONNECTED PLANET
				TOL. IN INCH		UNIT : INCH [mm]	REV. : A0	
Bain Liu	09-03-09	<b>MagJack®</b> 10/100BT TAB DOWN, SHIELDED PATENTED	SI-60118-F  SI-60118-F.DWG	.X		SCALE : N/A	SIZE : A4	
DRAWN BY	DATE			.XX			PAGE : 4	
Bain Liu	09-03-09			.XXX	$\pm 0.005$			