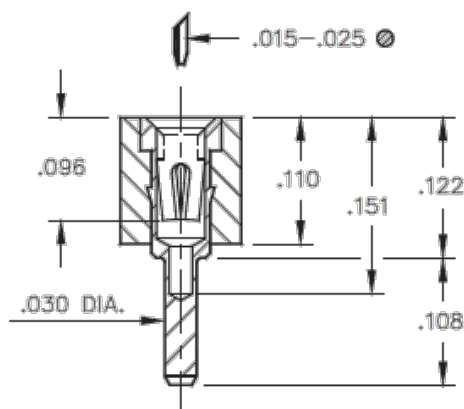




PRODUCT NUMBER: 515-13-025-05-000001

www.mill-max.com
DATA SHEET

SERIES 515 (Low Profile Solder Tail)



General Info

Description¹: Low Profile Solder Tail PGA Socket

Type: PGA

Category: Machined Pin Socket

Mounting Style: Through Hole Solder Mount

Pins: 25

Packaging²: Packaged in Box or Tube

ECCN: Contact Factory

HTSUS: 8536.90.4040

Product Lifecycle: Active

Country Of Origin: USA

515-13-025-05-000001- SPECIFICATIONS

Environmental Specs

Temperature Range³: -55/+125° C

RoHS⁴: Yes

Moisture Sensitivity Level (MSL): 1 (Unlimited)

REACH Status: REACH Unaffected

Materials

Loose Pin/Receptacle # (Material): 0501 (Brass Alloy)

Shell Plating: 10 μ " Gold over 100 μ " Nickel

Inner Contact #: 32

Contact Fingers: 6

Inner Contact Material: Beryllium Copper

Inner Contact Plating: 30 μ " Gold over 50 μ " Nickel

Insulator Material: High Temp Thermoplastic

NOTES:

1. Standard Tolerances:

Assembly tolerance: $\pm .010$ " (.25mm)

Insulator length: $\pm .005$ " (.13mm)

Insulator width: $\pm .005$ " (.13mm)

Insulator height: $\pm .005$ " (.13mm)

Pin Length: $\pm .005$ " (.13mm)

Pin Diameter: $\pm .002$ " (.051mm)

Pin Angle: $\pm 2^\circ$

Co-planarity of SMT connectors: .005" (.13mm) up to 1" (25.4mm) in connector length

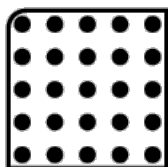
Insulator Flatness: .005" (.13mm) up to 1" (25.4mm) in connector length

2. Not all part numbers in the series may be packaged in tubes. Some specific part numbers may be packaged in a box.

3. Per IEC 60512-11-(4,-9,-10,-12)

4. Mill-Max products labeled with the RoHS symbol are compliant with all three ROHS Directives. All of our products previously described as RoHS (2002/95/EC) and RoHS-2 (2011/65/EC) are also compliant with RoHS-3 (2015/863/EU).

ADDITIONAL PARTS, PACKAGING, & ASSEMBLY INFO



025-05-000

ADDITIONAL NOTES AND SPECIFICATIONS

In the interest of improved design, quality and performance, Mill-Max reserves the right to make changes in its specifications without prior notice. Specifications and tolerances are provided wherever possible. The tolerance on dimensions of critical to function features is typically held tighter than the stated standard tolerances, such as press-fits, holes and lengths affecting the coplanarity of SMT products. Due to the wide variety of interconnects Mill-Max offers, the specific tolerances vary from product to product. If you need information regarding the tolerance of a particular part, please contact Technical Services.

RELATED LINKS AND DOCUMENTS

- Environmental Compliance: <https://www.mill-max.com/rohs>