



LG01-N Single Channel LoRa IoT Gateway - 868MHz

SKU 113990658



LG01-N is an open source single channel LoRa Gateway. It lets you bridge LoRa wireless network to an IP network via WiFi, Ethernet, 3G or 4G cellular.

- 1 +

CN Warehouse



Add to Cart

Tags:

LORA

LORA GATEWAY

IoT GATEWAY

DRAGINO

868MHz

OPEN SOURCE

MQTT MODE

TCP/IP CLIENT MODE

LOW COST

Description

Documents

Learn

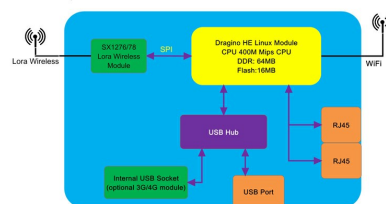
Reviews

FAQS

LG01-N is an open source single channel LoRa Gateway. It lets you bridge LoRa wireless network to an IP network via WiFi, Ethernet, 3G or 4G cellular. The LoRa wireless allows users to send data and reach extremely long ranges at low data-rates. It provides ultra-long range spread spectrum communication and high interference immunity.

LG01-N has rich internet connection method such as WiFi interface, Ethernet port and USB host port. These Interfaces provide flexible methods for users to connect their sensor networks to Internet.

LG01N System Overview:

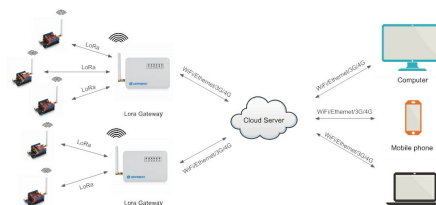


LG01-N can support the LoRaWAN protocol in single frequency and customized LoRa transmit protocol. Different from LG01-P/LG01-S, LG01-N use the Linux to directly control the sx1276/sx1278 LoRa module which increase the communication efficiency and simplify the software design.

LG01-N can be used to provide a low cost IoT wireless solution to support 50~300 sensor nodes.

Except LoRaWAN mode, LG01-N can support mutiply working mode such as: MQTT mode, TCP/IP Client mode to fit different requirement for IoT connection.

LG01-N base on sx1276 solution which provide a low cost for your IoT network connection. Compare to the cost with normal SX1301 LoRaWAN solution, the LG01-N is only of its 1/4 or less cost. This make the LG01-N very suitable to set up small scale LoRa network.



Features:

- Open Source OpenWrt system
- Low power consumption
- Firmware upgrade via Web
- Software upgradable via network
- Flexible protocol to connect to IoT servers
- Auto-Provisioning
- Built-in web server
- Managed by Web GUI, SSH via LAN or WiFi
- Internet connection via LAN, WiFi, 3G or 4G
- Failsafe design provides robustly system
- 1 x SX1276/SX1278 LoRa module
- Limited support in LoRaWAN/ Support Private LoRa protocol
- Support up to 300 nodes
- LoRa band available at 433/868/915/920 Mhz
- Max range in LoRa: 5~10 km. Density Area:>500m

Applications:

- Wireless Alarm and Security Systems
- Home and Building Automation
- Automated Meter Reading
- Industrial Monitoring and Control
- Long range Irrigation Systems
- GPS tracker, etc
- LoRaWAN Repeater



Smart home



Intelligent Community



Outdoor monitoring



Smart medical



Smart farm



Intelligent plant



Cloud computation



Intelligent transport

Specifications

- Processor: 400MHz, 24K MIPS
 - Flash: 16MB ; RAM: 64MB
- LoRa Side:**
- LoRa Controller: AR9331 24K MIPS / Linux
 - LoRa Chip: SX2176

- Interfaces:**
- 10M/100M RJ45 Ports x 2
 - WiFi : 802.11 b/g/n
 - LoRa Wireless
 - Power Input: 12V DC
 - USB 2.0 host connector x 1
 - USB 2.0 host internal interface x 1
 - LoRa Interface x 1

Part List:
1 x LG01-N LoRa Gateway
1 x Glue Stick Antenna(868 MHZ)
1 x Power Adapter

Notice:

LG01 is a single channel gateway, it can be used in LoRaWAN network but not LoRaWAN full compatible. Please see the user manual before buying it.

ECCN/HTS

ECCN	5A991.e
HSCODE	8517629900

Bundle Sales

...

+

...

+

...

+

...

+

...

+

...

+

...

☐ This item: LG01-N Single Channel LoRa IoT Gateway - 868MHz

☐ LoRa/GPS Shield For Arduino

☐ LoRa Antenna Kit

☐ Dragino LoRa Shield - support 868M frequency

☐ Grove - LoRa Radio 868MHz

☐ Pycom LoPy MicroPython enabled development board (LoRa, WiFi, Bluetooth)

☐ Pycom LoPy4 MicroPython enabled development board (LoRa, Sigfox, WiFi, Bluetooth)

Company

Official Website

About Seed

Solution

Distributors

Careers

Contacts

Help Center

How to Get Help

FAQ

Technical Support

Shipping & Order

Warranty & Returns

Payment Information

Community

Project Hub

Forum

Blog

Wiki

Stay Tuned

Enter Email Address

>

f

t

+

i