

NOTES:

1. MATERIALS AND FINISHES:

BODY – BRASS, GOLD PLATING

CONTACT – BERYLLIUM COPPER, GOLD PLATING

INSULATOR – PTFE
2. ELECTRICAL:

A. IMPEDANCE: 50 OHM

B. FREQUENCY RANGE: DC 0–6 GHz

C. DIELECTRIC WITHSTANDING VOLTAGE: 500 VRMS, MIN.
3. MECHANICAL:

A. DURABILITY: 500 CYCLES MIN.

B. TEMPERATURE RANGE: – 65°C to +165°C
4. PACKAGING:

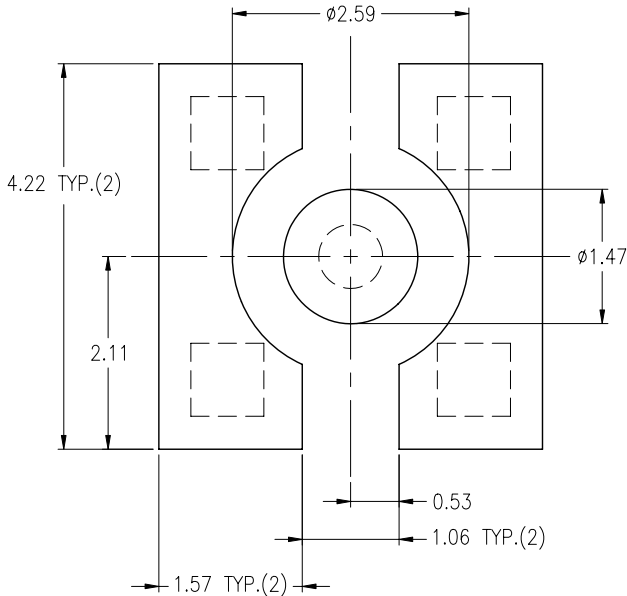
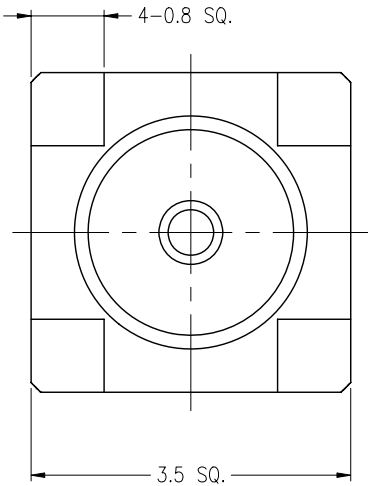
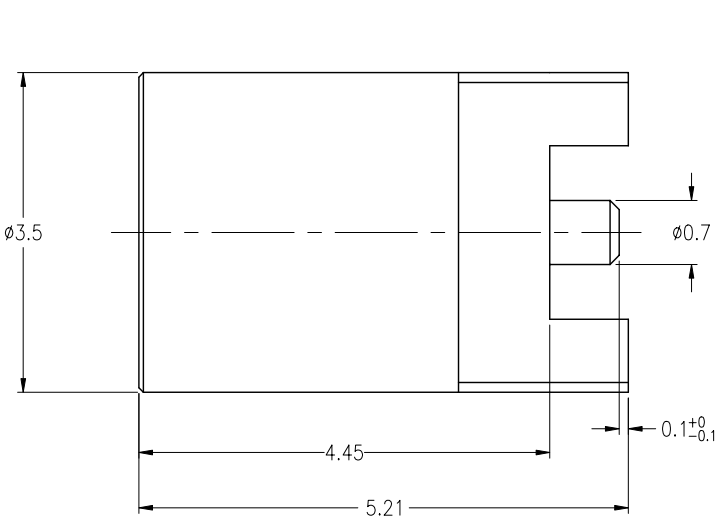
A. PACKAGE CONNECTOR IN TAPE AND REEL, QTY OF 750 PCS

THIRD ANGLE PROJ.



REVISIONS

REV	DESCRIPTION	DATE	ECO	APPR
A	SEE SHEET 1	05–Mar–03	--	--
B	SEE SHEET 1	11–Aug–08	--	SH
C	SEE SHEET 1	30–Apr–09	47924	SH
D	ADD NOTE 4\RD–DM10040701T1	15–Apr–10	48059	SH
E	4.45 WAS 4.5,5.21 WAS 5.26\RD–DM14012101J8	03–Mar–14	49948	J.C



RECOMMENDED MOUNTING PATTERN

CUSTOMER OUTLINE DRAWING

ALL OTHER SHEETS ARE FOR INTERNAL USE ONLY

UNLESS OTHERWISE SPECIFIED, DIMENSIONS ARE IN METRIC AND TOLERANCES ARE:  
0.5 – 6mm ±0.1mm    6 – 30mm ±0.2mm    30 – 120mm ± 0.3mm    ANGLES ±1°

NOTICE – These drawings, specifications, or other data (1) are, and remain the property of Amphenol Corp. (2) must be returned upon request; and (3) are confidential and not to be disclosed to any person other than those to whom they are given by Amphenol Corp. The furnishing of these drawings, specifications, or other data by Amphenol Corp., or to any other person to anyone for any purpose is not to be regarded by implication or otherwise in any manner licensing, granting rights or permitting such holder or any other person to manufacture, use or sell any product, process or design, patented or otherwise, that may in any way be related to or disclosed by said drawings, specifications, or other data.

MATERIAL

REFERENCE

FINISH

DRAWN  
J.CHEN  
ENGINEER  
KEN  
APPROVED  
SCOTT  
CAD FILE  
F:\DWG\MMCX\6251N3\50\3GT30G–ESZ

DATE  
26–Mar–14  
DATE  
05–Mar–03  
DATE  
28–Mar–14

TITLE  
MMCX SURFACE MOUNT JACK

SCALE: 12/1    SHEET 1 OF 1

DWG SIZE B    CODE ID 74868    REV E

Amphenol RF  
Danbury CT USA, Tainan Taiwan, Shenzhen China  
www.amphenolrf.com

DRAWING NO. MMCX6251N3–3GT30G–50

ITEM NO. 096251AAG56GE5F

PART NO. 908–22116