

### Compact Thumb-wheel Driving Rotary Potentiometers

Type: **EVLH**



#### ■ Features

- Dustproof molded structure
- Wave-soldering available
- Custom-designed thumb wheels available

#### ■ Recommended Applications

- Radios, Headphone Cassette Tape Players, Micro-cassette Tape Recorders
- LCD screen TVs, VCRs
- Contrast control for LCDs

#### ■ Explanation of Part Numbers

1	2	3	4	5	6	7	8	9	10	11	12
<b>E</b>	<b>V</b>	<b>L</b>	<b>H</b>								
Product Code			Specifications			Wheel Shape			Taper & Resistance		

#### ■ Specifications

Mechanical	Rotation Angle	260 °																				
	Rotation Torque	0.5 mN·m to 6 mN·m																				
	Shaft Stopper Strength	60 mN·m min.																				
	Detent	Center detent available																				
Electrical	Nominal Total Resistance	1 kΩ to 250 kΩ (Tolerance ±20 %) 1 kΩ to 500 kΩ (B) (Tolerance ±20 %)																				
	Taper	<table><tr><td colspan="2"><div><div></div><div>Measuring method</div></div></td><td>Voltage between T1 &amp; T2 Voltage between T1 &amp; T3 ×100(%) At 50 % of effective rotation</td></tr><tr><td>EIAJ</td><td>Panasonic</td><td>EVLH</td></tr><tr><td>15A</td><td>A</td><td>10 to 25</td></tr><tr><td>1B</td><td>B</td><td>40 to 60</td></tr><tr><td>15C</td><td>C</td><td>10 to 25*</td></tr><tr><td>10A</td><td>D</td><td>6 to 15</td></tr></table>			<div><div></div><div>Measuring method</div></div>		Voltage between T1 & T2 Voltage between T1 & T3 ×100(%) At 50 % of effective rotation	EIAJ	Panasonic	EVLH	15A	A	10 to 25	1B	B	40 to 60	15C	C	10 to 25*	10A	D	6 to 15
		<div><div></div><div>Measuring method</div></div>		Voltage between T1 & T2 Voltage between T1 & T3 ×100(%) At 50 % of effective rotation																		
		EIAJ	Panasonic	EVLH																		
		15A	A	10 to 25																		
		1B	B	40 to 60																		
15C		C	10 to 25*																			
10A	D	6 to 15																				
*Angle from terminal 3 side. $\left( \frac{\text{Voltage between T2 \& T3}}{\text{Voltage between T1 \& T3}} \times 100 (\%) \right)$																						
Power Rating	0.03 W (Taper B), 0.01 W (Others)																					
Residual Resistance	<table><tr><td><div><div></div><div>Taper &amp; Terminal</div></div></td><td>A·B·D : T1 &amp; T2 B·C : T2 &amp; T3</td><td>A·D : T2 &amp; T3 C : T1 &amp; T2</td></tr><tr><td>R=Nominal Total Resistance</td><td></td><td></td></tr><tr><td>R ≤ 50 kΩ</td><td>2 Ω</td><td>25 Ω</td></tr><tr><td>50 kΩ &lt; R ≤ 250 kΩ</td><td>25 Ω</td><td>50 Ω</td></tr><tr><td>250 kΩ &lt; R ≤500 kΩ</td><td>100 Ω</td><td>100 Ω</td></tr></table>			<div><div></div><div>Taper &amp; Terminal</div></div>	A·B·D : T1 & T2 B·C : T2 & T3	A·D : T2 & T3 C : T1 & T2	R=Nominal Total Resistance			R ≤ 50 kΩ	2 Ω	25 Ω	50 kΩ < R ≤ 250 kΩ	25 Ω	50 Ω	250 kΩ < R ≤500 kΩ	100 Ω	100 Ω				
	<div><div></div><div>Taper &amp; Terminal</div></div>	A·B·D : T1 & T2 B·C : T2 & T3	A·D : T2 & T3 C : T1 & T2																			
	R=Nominal Total Resistance																					
	R ≤ 50 kΩ	2 Ω	25 Ω																			
50 kΩ < R ≤ 250 kΩ	25 Ω	50 Ω																				
250 kΩ < R ≤500 kΩ	100 Ω	100 Ω																				
Noise Level	100 mV max.																					
Endurance	Operating Life	10000 cycles min.																				
Minimum Quantity/Packing Unit		100 pcs. Polyethylene Bag (Bulk)																				
Quantity/Cartron		4000 pcs.																				


Design and specifications are each subject to change without notice. Ask factory for the current technical specifications before purchase and/or use.  
Should a safety concern arise regarding this product, please be sure to contact us immediately.

Apr. 2008

### ■ Dimensions in mm (not to scale)

#### ● 7 mm Dia. Single

Pre-coupled wheel ..... EVLH

No. 1		
		
Wheel color	Part No.	Midpoint Detent
Black	EVLHFAA01	—
White	EVLHFAA02	—
Gray	EVLHFAA03	—
Black	EVLHFKA01	with
White	EVLHFKA02	with
Gray	EVLHFKA03	with
Wheel dia. $\phi 12.8$ mm		

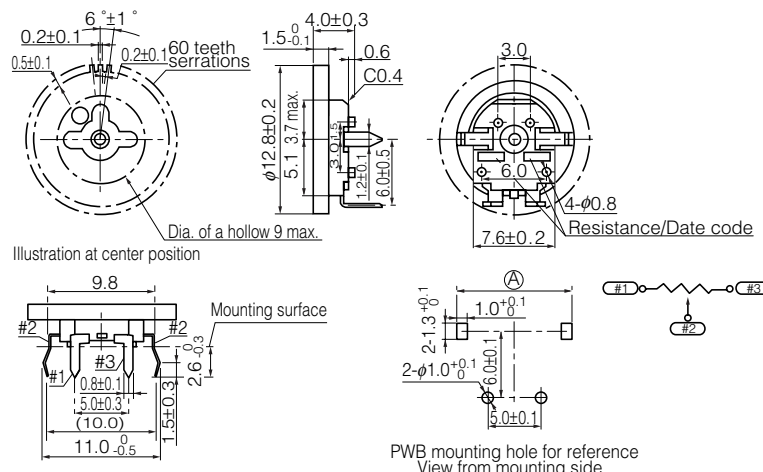



Illustration at center position

Mounting surface

PWB mounting hole for reference  
View from mounting side

PWB thickness	(A)
1.2±0.1	10.3±0.1
1.0±0.1	10.2 $^{+0}_{-0.1}$

No. 2		
		
Wheel color	Part No.	Midpoint Detent
Black	EVLHFAA06	—
Black	EVLHFKA06	with
Wheel dia. $\phi 13.0$ mm		

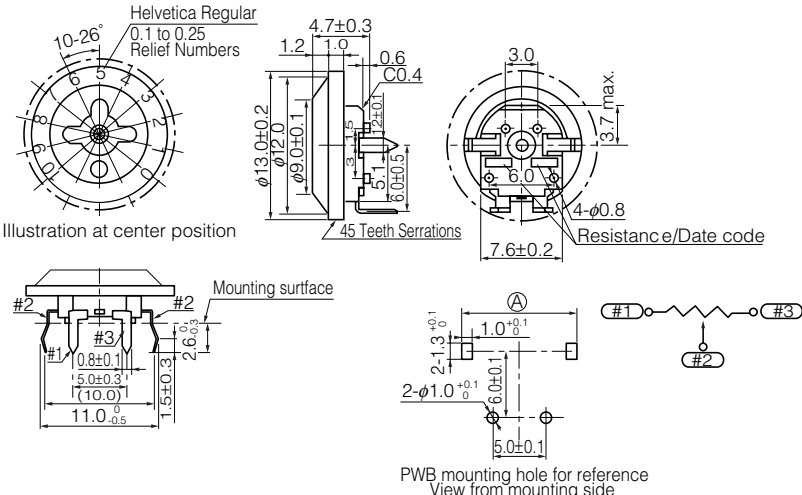


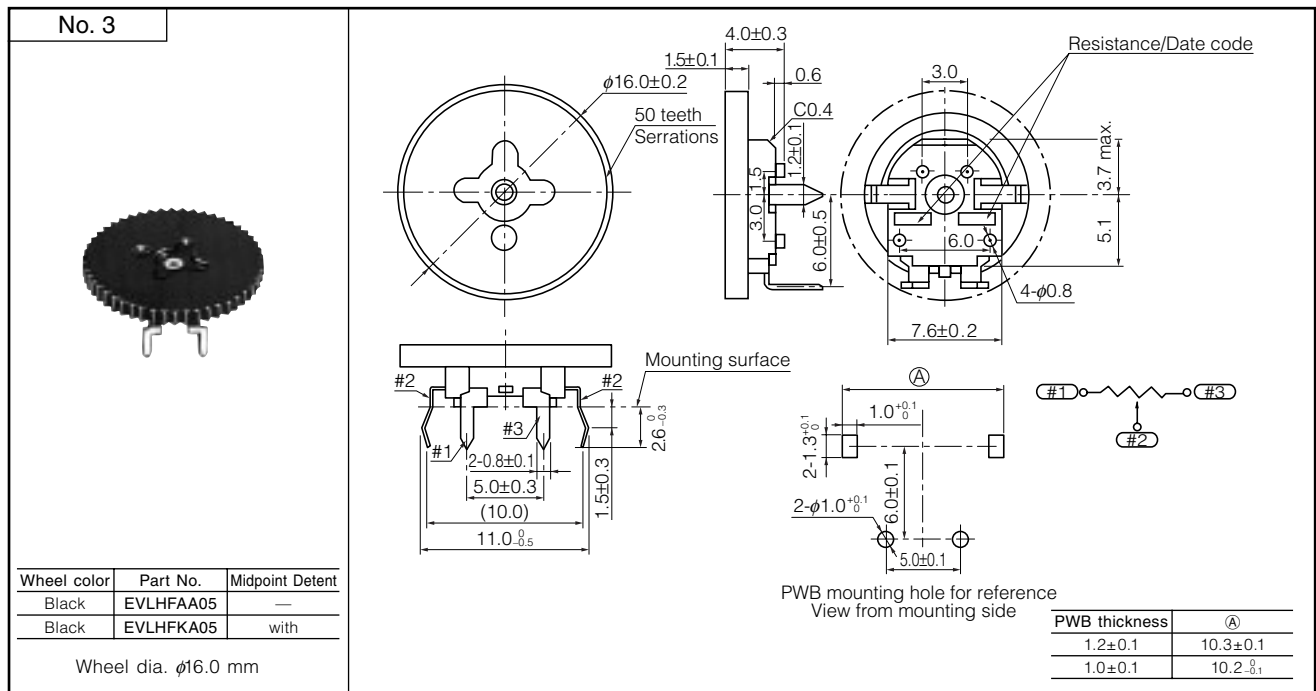
Illustration at center position

Mounting surface

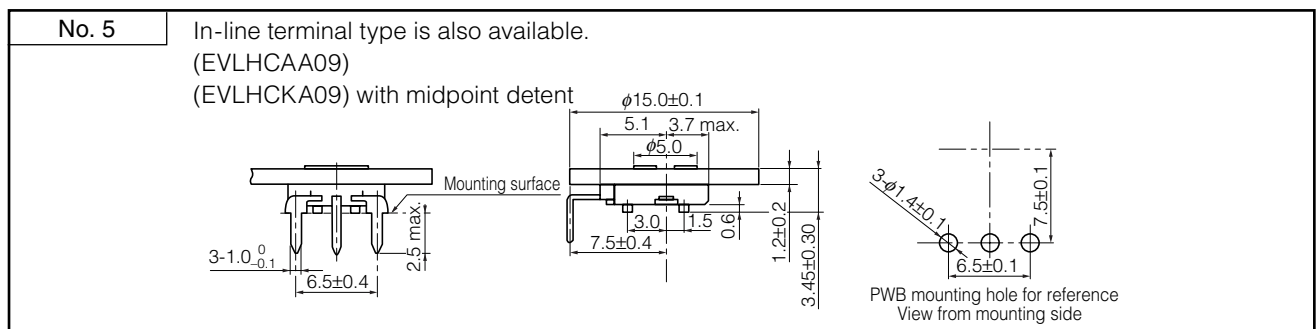
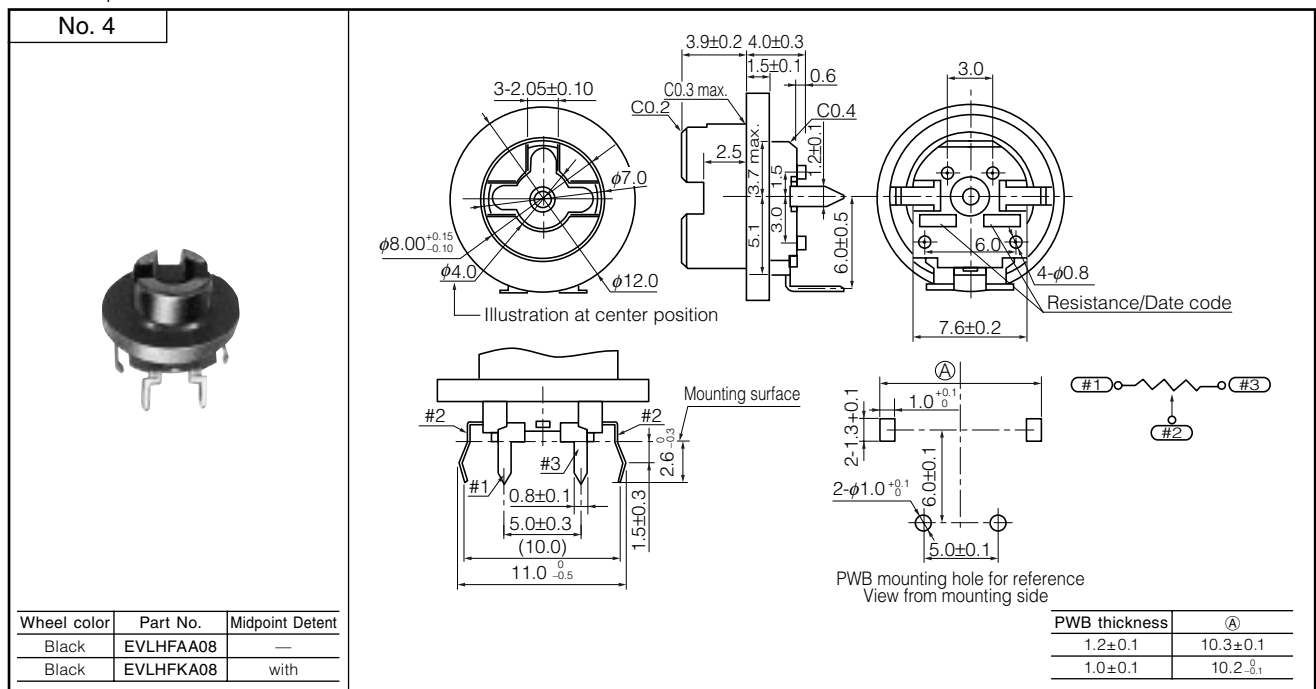
PWB mounting hole for reference  
View from mounting side

PWB thickness	(A)
1.2±0.1	10.3±0.1
1.0±0.1	10.2 $^{+0}_{-0.1}$

Pre-coupled wheel ..... EVLH



Post-coupled wheel ..... EVLH



Design and specifications are each subject to change without notice. Ask factory for the current technical specifications before purchase and/or use.  
Should a safety concern arise regarding this product, please be sure to contact us immediately.