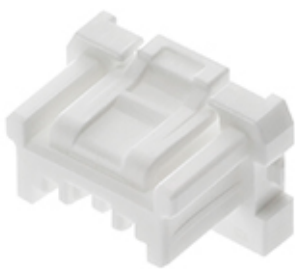




**Part Number :** [2016472020](#)  
**Product Description :** Spot-On Wire-to-Board  
Receptacle Housing, 1.50mm Pitch, Single  
Row, 2 Circuits, Natural  
**Series Number :** 201647  
**Status :** Active  
**Product Category :** Connector Housings



## Documents & Resources


**Drawings**  
[2016472020\\_sd.pdf](#)

**3D Models and Design Files**  
[2016472020\\_stp.zip](#)

**Specifications**  
[2016440000-A00.pdf](#)  
[2016440000-A01.pdf](#)  
[2016479200-200.pdf](#)  
[2016470000-000.pdf](#)

## Product Environment Compliance

### Compliance

GADSL/IMDS	Not Relevant
China RoHS	
EU ELV	Not Relevant
Low-Halogen Status	Not Low-Halogen per IEC 61249-2-21
REACH SVHC	Not Contained per D(2024)7663-DC (21 Jan 2025)
EU RoHS	Compliant per EU 2015/863

### Multiple Part Product Compliance Statements

- Eu RoHS
- REACH SVHC
- Low-Halogen

### Multiple Part Industry Compliance Documents

- IPC 1752A Class C
- IPC 1752A Class D
- Molex Product Compliance Declaration
- IEC-62474
- chemSHERPA (xml)

## EU RoHS Certificate of Compliance

---

### Part Details

#### General

Status	Active
Category	Connector Housings
Series	201647
Description	Spot-On Wire-to-Board Receptacle Housing, 1.50mm Pitch, Single Row, 2 Circuits, Natural
Application	Signal, Wire-to-Board
Product Name	Spot-On
UPC	889056814232

#### Physical

Circuits (maximum)	2
Color - Resin	Natural
Gender	Receptacle
Glow-Wire Capable	No
Keying to Mating Part	Yes
Lock to Mating Part	Yes
Material - Resin	PBT
Net Weight	335.000/mg
Number of Rows	1
Packaging Type	Bag
Panel Mount	No
Pitch - Mating Interface	1.50mm
Pitch - Termination Interface	1.50mm
Polarized to Mating Part	Yes
Temperature Range - Operating	-40° to +105°C

---

## Mates With / Use With

### Mates with Part(s)

Description	Part Number
1.50mm Pitch, Spot-On Vertical Single Row Headers with Potting Capability	<u>201648</u>

### Use with Part(s)

Description	Part Number
Spot-On 1.5 Crimp Terminal, Female, Matte Tin (Sn) Plating, 28-24 AWG	<u>2016495000</u>
Spot-On Terminal Position Assurance (TPA) Wire-to-Board Retainer, 1.50mm Pitch, 2 Circuits, Grey	<u>2016502020</u>

---

This document was generated on Apr 26, 2025

---