



ON Semiconductor®

<http://onsemi.com>

FW276

N-Channel Power MOSFET 450V, 0.7A, 12.1Ω, Dual SOIC8

Features

- On-resistance $R_{DS(on)}=9.3\Omega$ (typ.)
- Input capacitance $C_{iss}=55pF$ (typ.)
- 10V drive
- Nch+Nch dual MOSFET
- Halogen free compliance

Specifications

Absolute Maximum Ratings at $T_c = 25^\circ C$

Parameter	Symbol	Conditions	Value	Unit
Drain to Source Voltage	V_{DSS}		450	V
Gate to Source Voltage	V_{GSS}		± 30	V
Drain Current (DC)	I_D		0.7	A
	I_{DL}^{*1}		0.35	A
Drain Current ($PW \leq 10\mu s$)	I_{DP}	Duty cycle $\leq 1\%$	2.8	A
Power Dissipation (1 unit)	P_D		1.6	W
Total Power Dissipation (2 units)	P_T		2.0	W
Junction Temperature	T_j		150	$^\circ C$
Storage Temperature	T_{stg}		-55 to +150	$^\circ C$
Lead Temperature for Soldering Purposes, 3mm from Case for 10 Seconds	T_L		260	$^\circ C$

Note: *1 Package limited

Thermal Resistance Ratings

Parameter	Symbol	Value	Unit
Junction to Ambient (1 unit) *2	$R_{\theta JA}$	78.1	$^\circ C/W$
Junction to Ambient (2 units) *2	$R_{\theta JA}$	62.5	$^\circ C/W$

Note: *2 Surface mounted on ceramic board using 2000mm²×0.8mm

Stresses exceeding Maximum Ratings may damage the device. Maximum Ratings are stress ratings only. Functional operation above the Recommended Operating Conditions is not implied. Extended exposure to stresses above the Recommended Operating Conditions may affect device reliability.

Electrical Characteristics at $T_a = 25^\circ C$

Parameter	Symbol	Conditions	Value			Unit
			min	typ	max	
Drain to Source Breakdown Voltage	$V_{(BR)DSS}$	$I_D=10mA, V_{GS}=0V$	450			V
Zero-Gate Voltage Drain Current	I_{DSS}	$V_{DS}=360V, V_{GS}=0V$			100	μA
Gate to Source Leakage Current	I_{GSS}	$V_{GS}=\pm 24V, V_{DS}=0V$			± 10	μA
Gate Threshold Voltage	$V_{GS(th)}$	$V_{DS}=10V, I_D=1mA$	3.5		4.5	V
Forward Transconductance	g_{FS}	$V_{DS}=10V, I_D=0.35A$		0.4		S
Static Drain to Source On-State Resistance	$R_{DS(on)}$	$I_D=0.35A, V_{GS}=10V$		9.3	12.1	Ω
Input Capacitance	C_{iss}	$V_{DS}=20V, f=1MHz$		55		pF
Output Capacitance	C_{oss}			24		pF
Reverse Transfer Capacitance	C_{rss}			8		pF

Continued on next page.

ORDERING INFORMATION

See detailed ordering and shipping information on page 5 of this data sheet.

Continued from preceding page.

Parameter	Symbol	Conditions	Value			Unit
			min	typ	max	
Turn-ON Delay Time	$t_{d(on)}$	See Fig.1		7		ns
Rise Time	t_r			10		ns
Turn-OFF Delay Time	$t_{d(off)}$			15		ns
Fall Time	t_f			46		ns
Total Gate Charge	Q_g	$V_{DS}=200V, V_{GS}=10V, I_D=0.7A$		3.7		nC
Gate to Source Charge	Q_{gs}			1		nC
Gate to Drain "Miller" Charge	Q_{gd}			1.6		nC
Diode Forward Voltage	V_{SD}	$I_S=0.7A, V_{GS}=0V$		0.85	1.2	V
Reverse Recovery Time	t_{rr}	See Fig.2		76		ns
Reverse Recovery Charge	Q_{rr}	$I_S=0.7A, V_{GS}=0V, di/dt=100A/\mu s$		210		nC

Fig.1 Switching Time Test Circuit

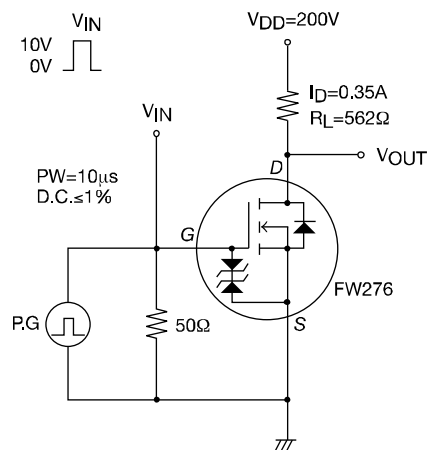
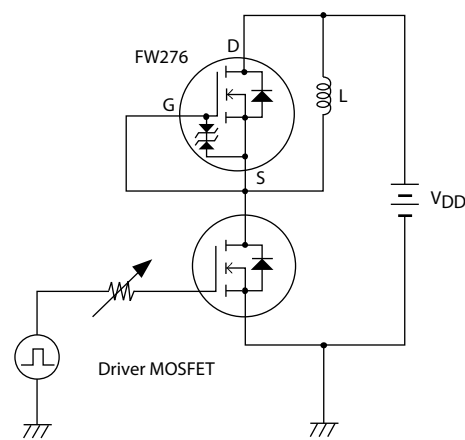
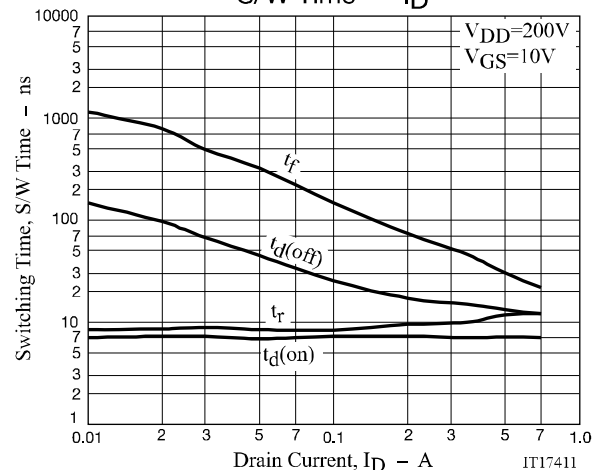
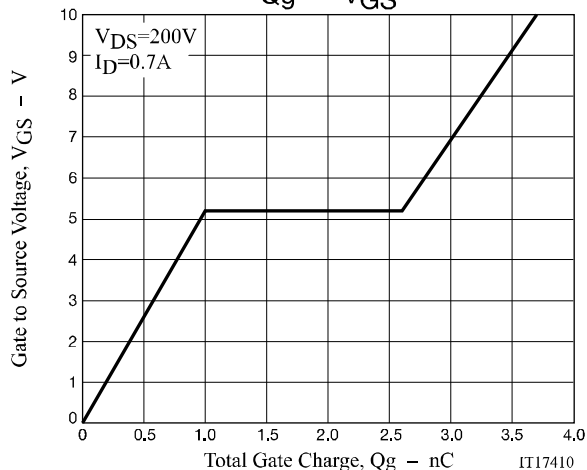
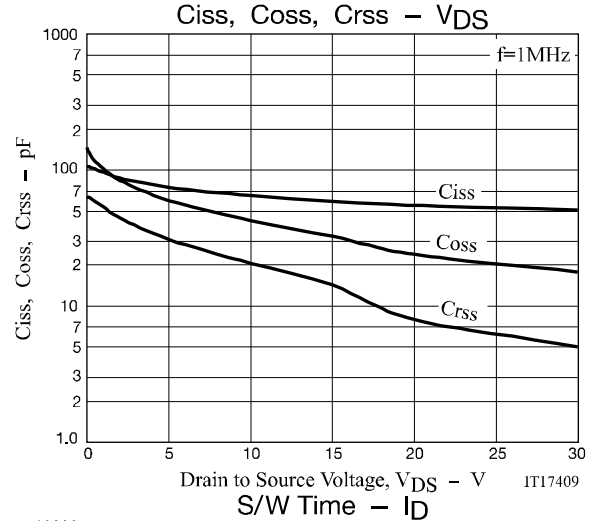
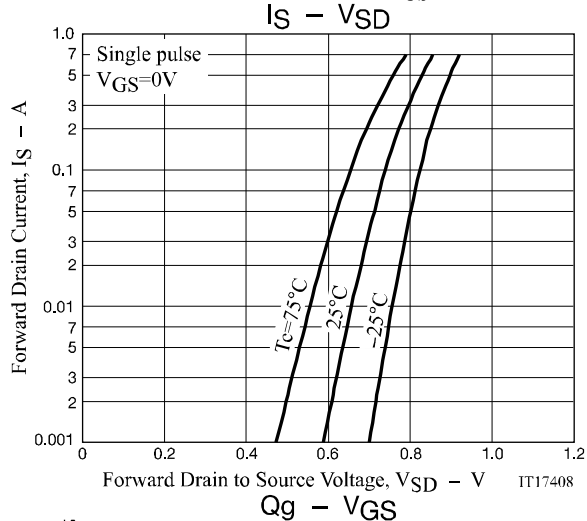
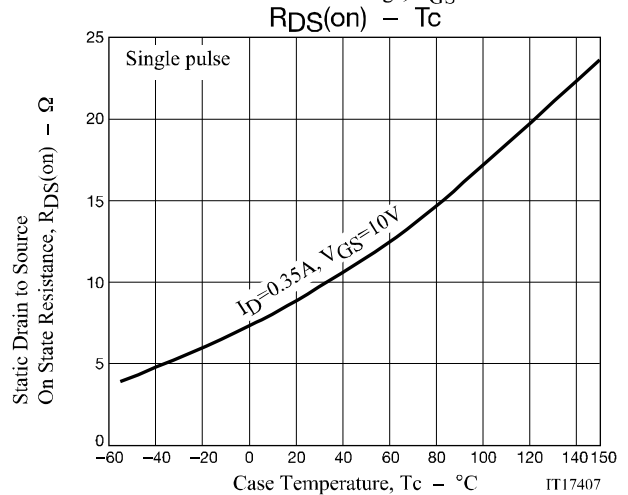
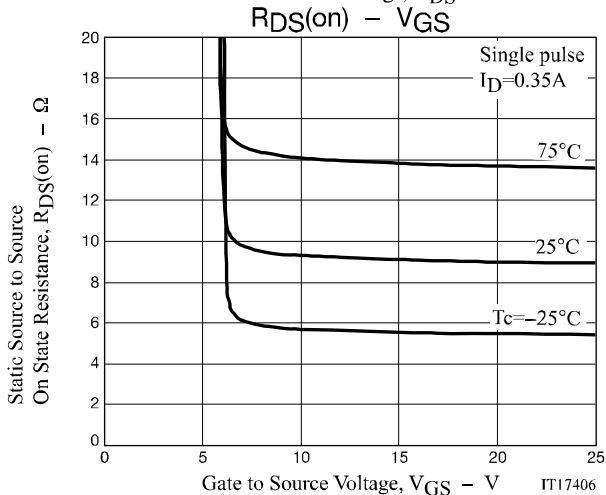
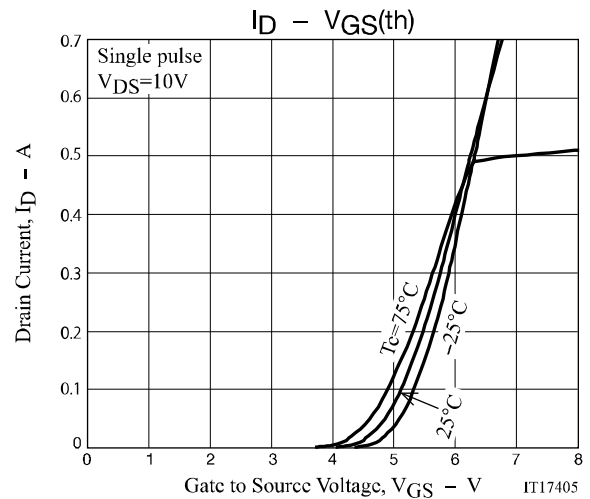
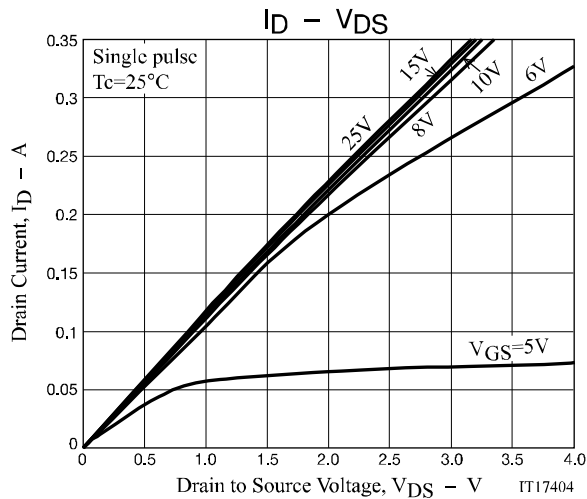
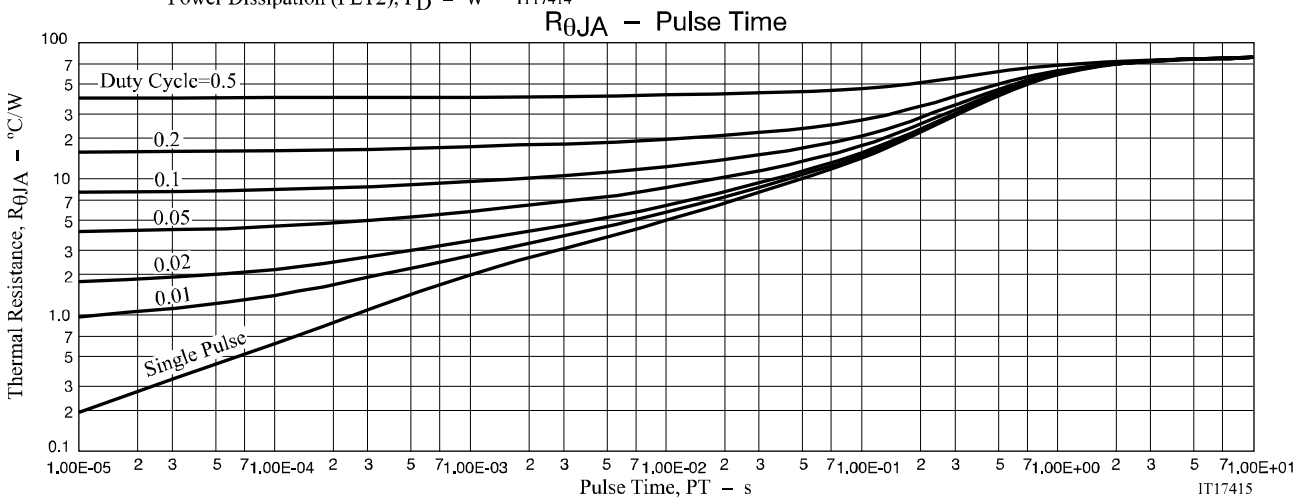
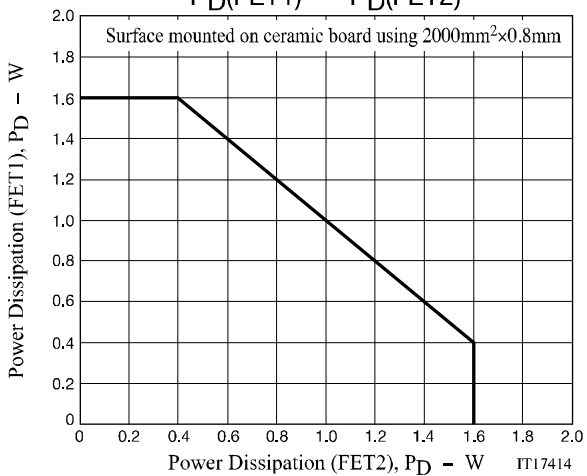
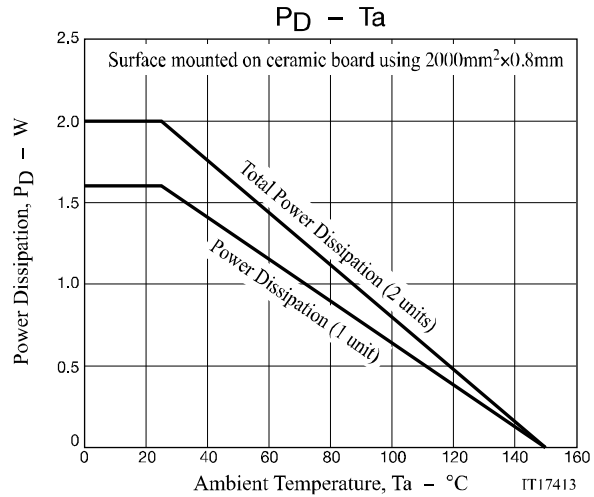
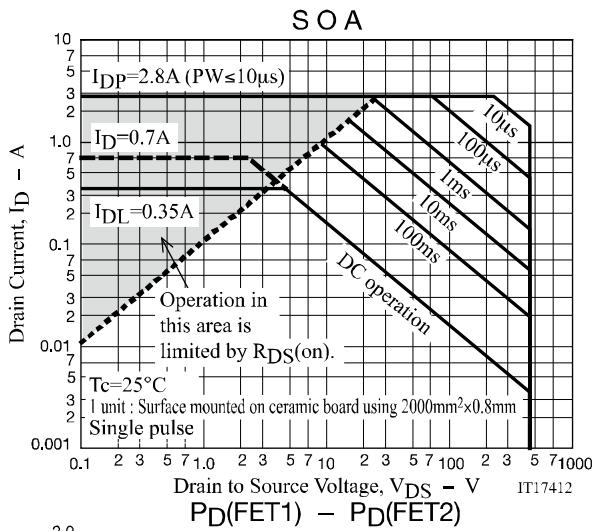


Fig.2 Reverse Recovery Time Test Circuit







Package Dimensions

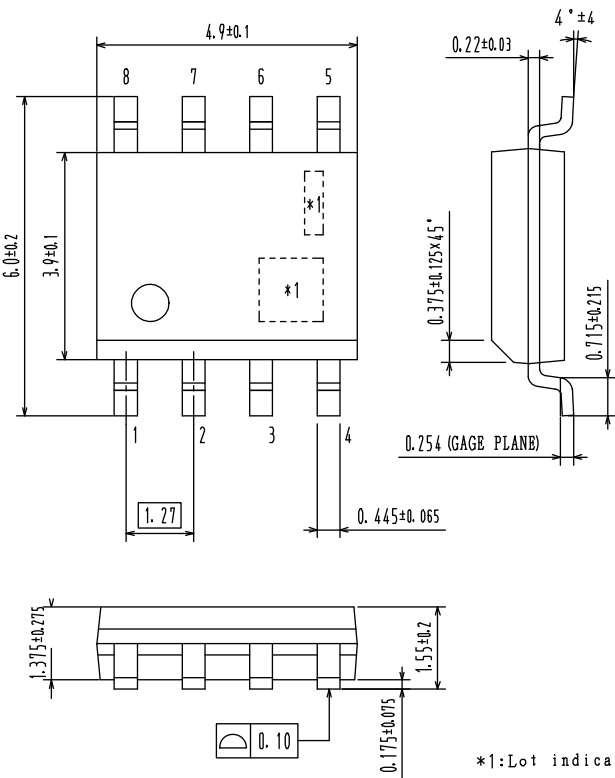
FW276-TL-2H

SOIC-8

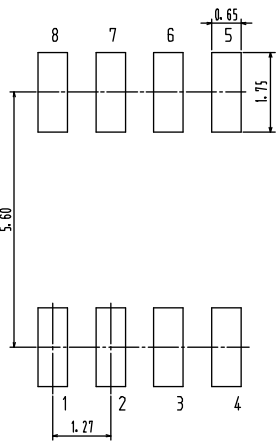
CASE 751CR
ISSUE O

Unit : mm

- 1: Source1
- 2: Gate1
- 3: Source2
- 4: Gate2
- 5: Drain2
- 6: Drain2
- 7: Drain1
- 8: Drain1



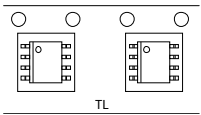
Recommended Soldering Footprint



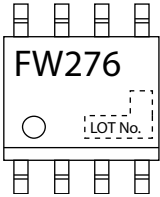
Ordering & Package Information

Device	Package	Shipping	note
FW276-TL-2H	SOIC8 (SC-87, SOT-96)	2,500 pcs. / reel	Pb-Free and Halogen Free

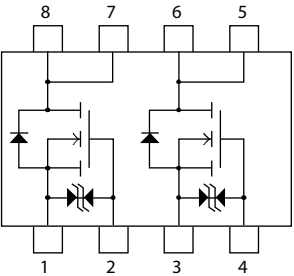
Packing Type:TL



Marking



Electrical Connection



Note on usage : Since the FW276 is a MOSFET product, please avoid using this device in the vicinity of highly charged objects.

ON Semiconductor and the ON logo are registered trademarks of Semiconductor Components Industries, LLC (SCILLC). SCILLC owns the rights to a number of patents, trademarks, copyrights, trade secrets, and other intellectual property. A listing of SCILLC's product/patent coverage may be accessed at www.onsemi.com/site/pdf/Patent-Marking.pdf. SCILLC reserves the right to make changes without further notice to any products herein. SCILLC makes no warranty, representation or guarantee regarding the suitability of its products for any particular purpose, nor does SCILLC assume any liability arising out of the application or use of any product or circuit, and specifically disclaims any and all liability, including without limitation special, consequential or incidental damages. "Typical" parameters which may be provided in SCILLC data sheets and/or specifications can and do vary in different applications and actual performance may vary over time. All operating parameters, including "Typicals" must be validated for each customer application by customer's technical experts. SCILLC does not convey any license under its patent rights nor the rights of others. SCILLC products are not designed, intended, or authorized for use as components in systems intended for surgical implant into the body, or other applications intended to support or sustain life, or for any other application in which the failure of the SCILLC product could create a situation where personal injury or death may occur. Should Buyer purchase or use SCILLC products for any such unintended or unauthorized application, Buyer shall indemnify and hold SCILLC and its officers, employees, subsidiaries, affiliates, and distributors harmless against all claims, costs, damages, and expenses, and reasonable attorney fees arising out of, directly or indirectly, any claim of personal injury or death associated with such unintended or unauthorized use, even if such claim alleges that SCILLC was negligent regarding the design or manufacture of the part. SCILLC is an Equal Opportunity/Affirmative Action Employer. This literature is subject to all applicable copyright laws and is not for resale in any manner.