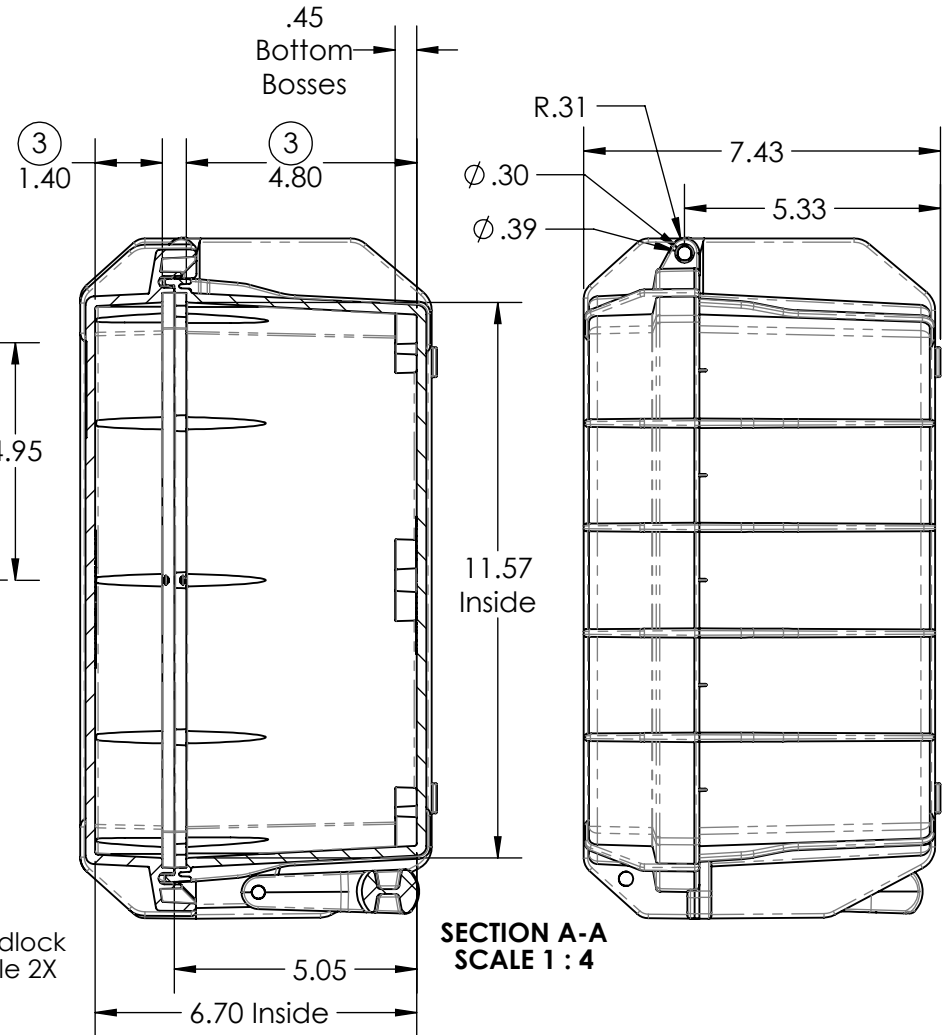
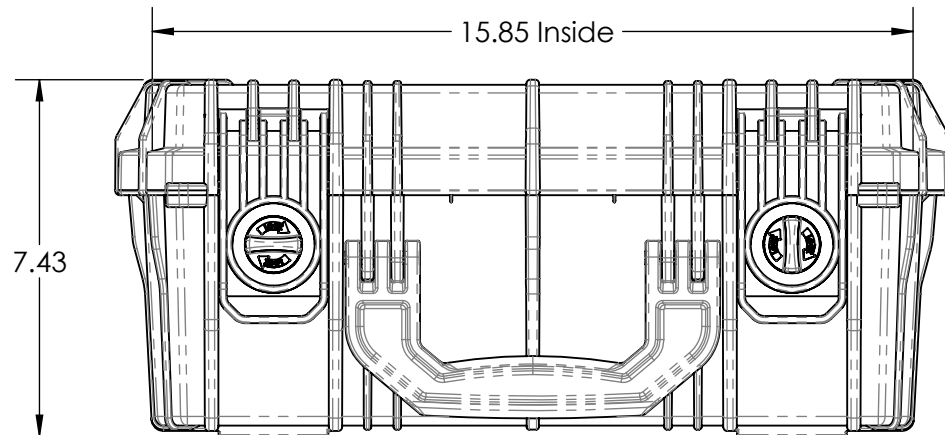
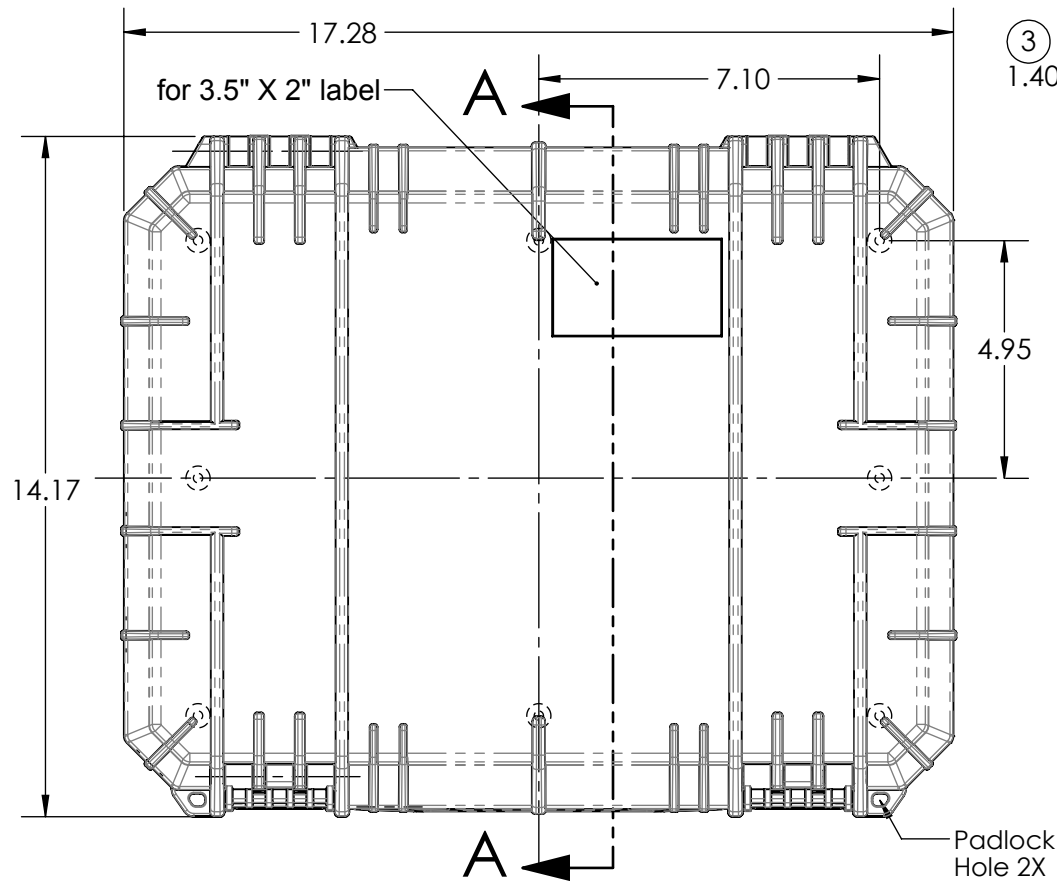


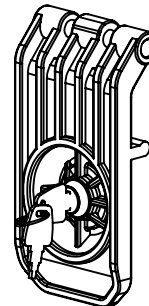
SERPAC 630

Electronic Enclosures



SE630ML

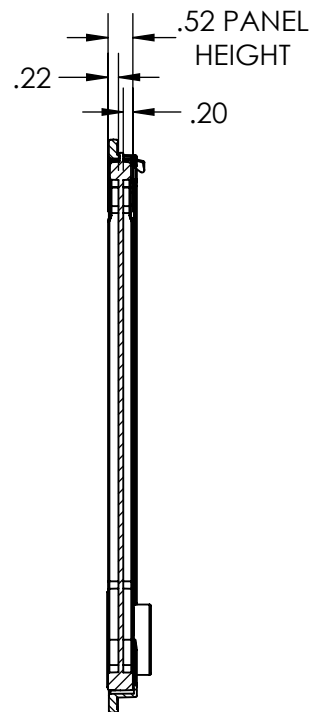
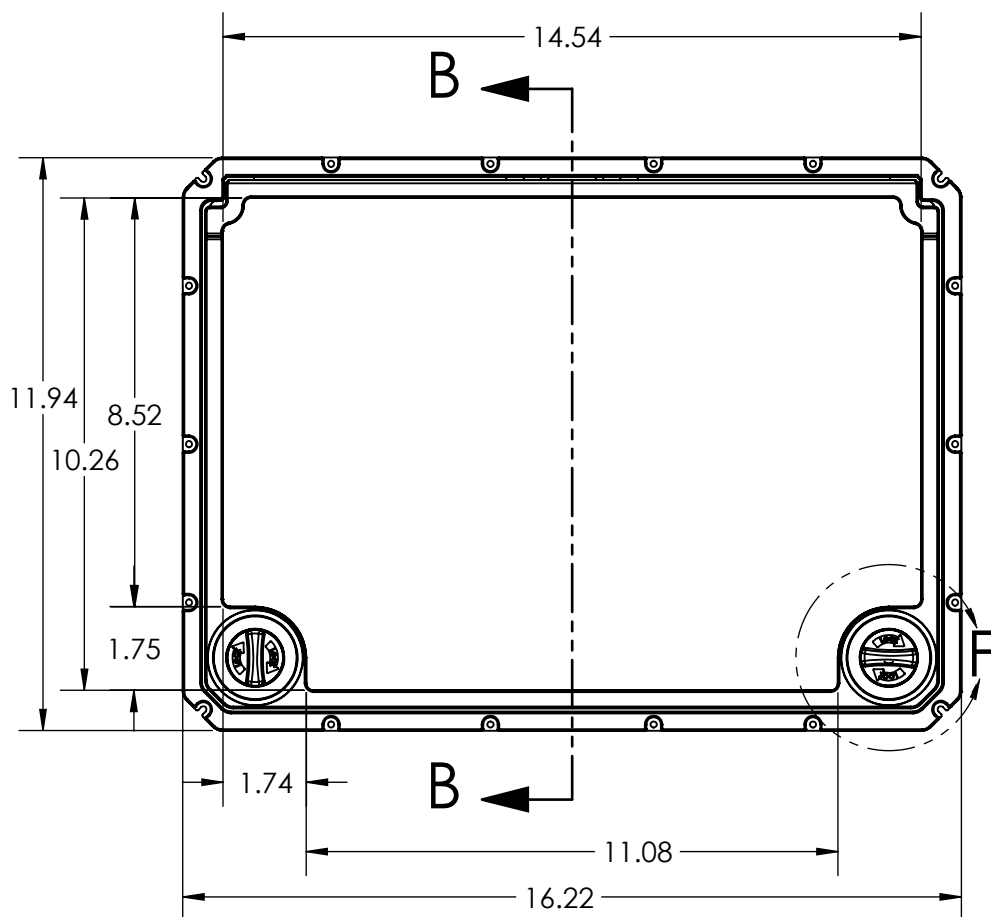
Optional latch with metal lock. See note 4



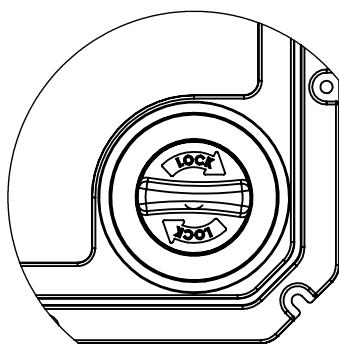
NOTES:

- 1) Max. usable inside dimensions are:
15 13/16" X 11 5/8" X 6 11/16" (6 1/4" top of boss)
dim. are approx.
- 2) Bosses on bottom use a 1/4 self tapping screw.
- 3) Dimensions to bottom of panel flange.
- 4) Optional latches with Metal Lock
Specify p/n SE630ML.

ALL DIMENSIONS ARE $\pm .010"$ 4/14/2015
2009 Wright Ave. La Verne CA 91750
Ph. (626) 339-6673 Fx. (626) 331-8584 www.seahorse.net

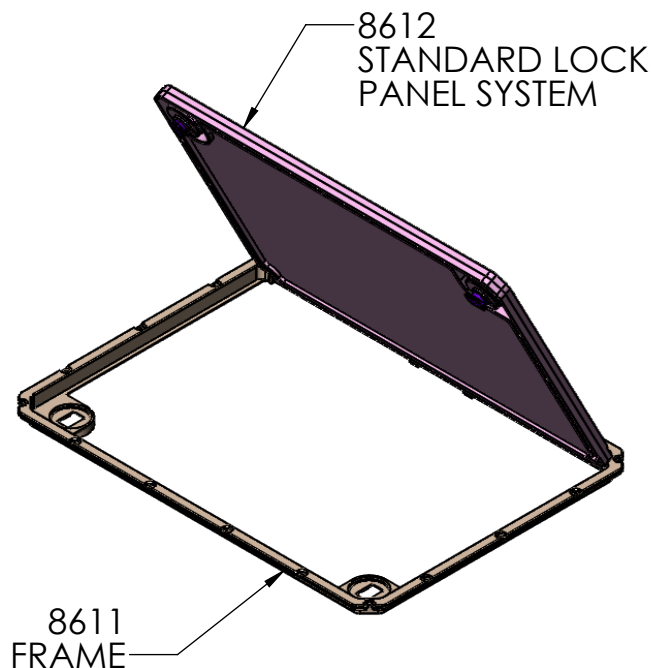


SECTION B-B
SCALE 1 : 4



STANDARD LOCK
DETAIL F
SCALE 1 : 2

Optional Metal Lock
Panel System available.
See page 3.
Optional foam available.
Call to inquire.



NOTES:

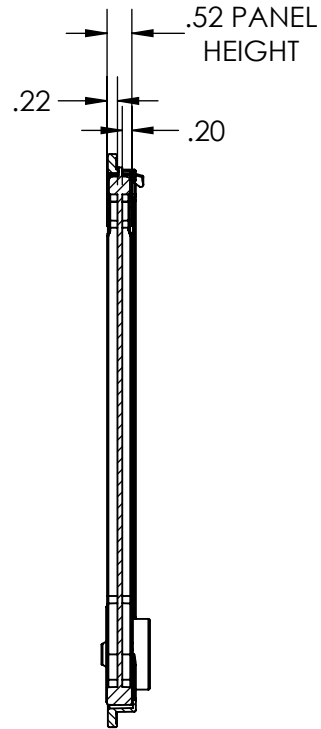
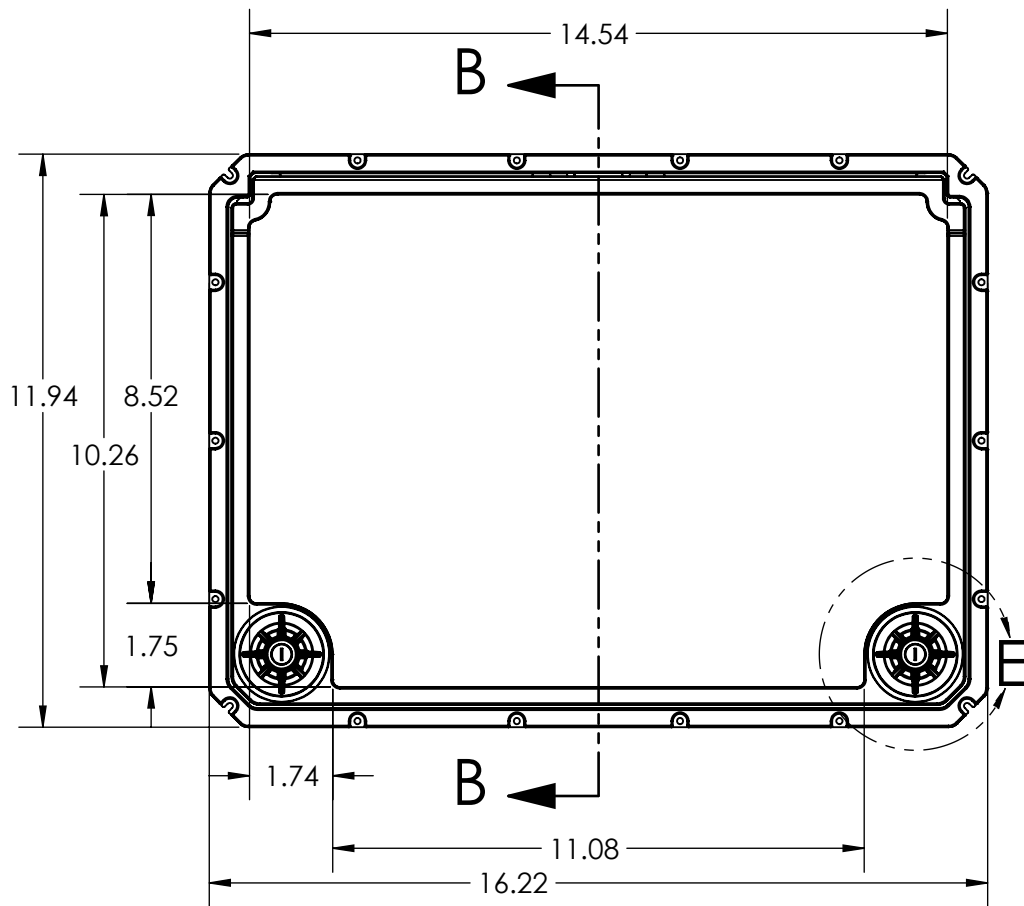
- 1) Maximum usable dimensions are:
14.54" X 10.26".
- 2) Panel systems is mountable on the
top or bottom of the case.
- 3) Mounting hardware (screws) are included.

ALL DIMENSIONS ARE $\pm .010"$ 3/20/2017
2009 Wright Ave. La Verne CA 91750

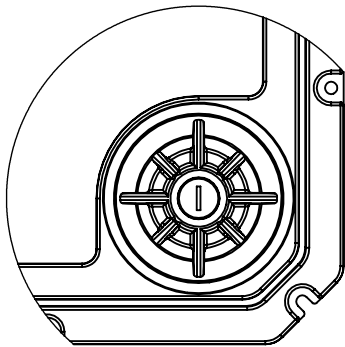
Ph. (626) 339-6673 Fx. (626) 331-8584 www.seahorse.net

SERPAC
Electronic Enclosures

8610ML Metal Lock Panel System

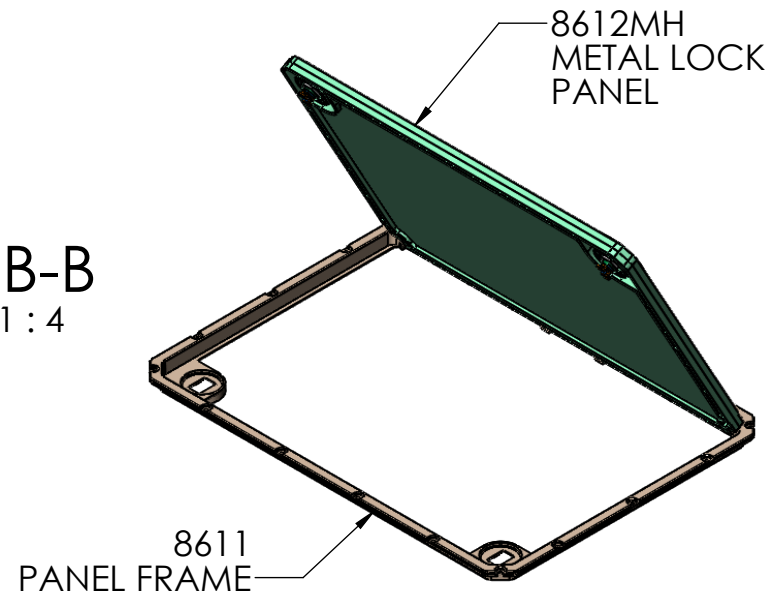


SECTION B-B
SCALE 1 : 4



Metal Lock
DETAIL E
SCALE 1 : 2

Optional Standard Lock
Panel System available.
See page 2.
Optional foam available.
Call to inquire.



NOTES:

- 1) Maximum usable dimensions are:
14.54" X 10.26".
- 2) Panel systems is mountable on the
top or bottom of the case.
- 3) Mounting hardware (screws) are included.

ALL DIMENSIONS ARE $\pm .010"$ 3/20/2017
2009 Wright Ave. La Verne CA 91750

Ph. (626) 339-6673 Fx. (626) 331-8584 www.seahorse.net