



Part Number : [1731090357](#)
Product Description : FCT Standard-Density D-Sub Connector, Female, Straight, PCB Through Hole, 10.30mm Tail Length, Gold Plating, 200 Mating Cycles, 6.20mm Support Sleeve, 6.60mm Snap-in Bolt, 9 Circuits, White Insulator
Series Number : 173109
Status : Active
Product Category : D-Sub Connectors
Engineering Number : F09S1G2-1276

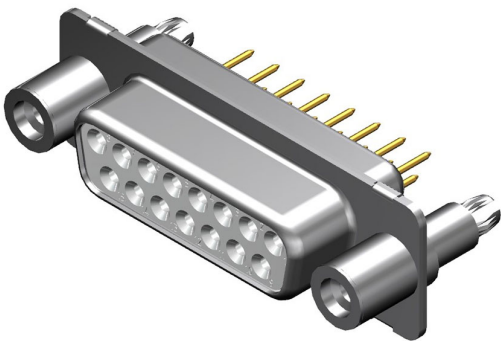


Illustration only.
The pole size may deviate from the image.


Documents & Resources

Drawings
[1731090357_sd.pdf](#)

3D Models and Design Files
[1731090357_stp.zip](#)

Product Environment Compliance

Compliance

GADSL/IMDS	Not Relevant
China RoHS	
EU ELV	Not Relevant
Low-Halogen Status	Not Reviewed per IEC 61249-2-21
REACH SVHC	Contains Lead per D(2022)9120-DC (17 Jan 2023)
EU RoHS	Compliant with Exemption 6(c) per EU 2015/863

Multiple Part Product Compliance Statements

- Eu RoHS
- REACH SVHC
- Low-Halogen

Multiple Part Industry Compliance Documents

- IPC 1752A Class C

- IPC 1752A Class D
- Molex Product Compliance Declaration
- IEC-62474
- chemSHERPA (xml)

EU RoHS Certificate of Compliance

Part Details

General

Status	Active
Category	D-Sub Connectors
Series	173109
Description	FCT Standard-Density D-Sub Connector, Female, Straight, PCB Through Hole, 10.30mm Tail Length, Gold Plating, 200 Mating Cycles, 6.20mm Support Sleeve, 6.60mm Snap-in Bolt, 9 Circuits, White Insulator
IP Rating	IP20
Magnetic	Yes
Product Name	FCT Products
Type	Standard Density
UPC	191128208284

Electrical

Current - Maximum per Contact	7.5A
Shielded	Yes

Physical

Circuits (Loaded)	9
Circuits (maximum)	9
Color - Resin	White
Gender	Female
Material - Contact	Copper Alloy
Material - Resin	PBT
Material - Shell	Steel
Net Weight	9.100/g
Number of Rows	2

Orientation	Straight
Packaging Type	Carton
Panel Mount	Rear
Panel Mount Method	Thread-In
PC Tail Length	10.30mm
PCB Locator	Yes
PCB Retention	Yes
PCB Thickness - Recommended	1.60mm
Pitch - Mating Interface	2.84mm
Pitch - Termination Interface	2.84mm
Plating - Contact	Gold over Nickel
Plating - Shell	Tin
Polarized to Mating Part	Yes
Polarized to PCB	Yes
Ports	1
Temperature Range - Operating	-55° to +125°C
Termination Style	Through Hole
Waterproof / Dustproof	No
Waterproof / Dustproof Type	IP20

Mates With / Use With

Mates with Part(s)

Description	Part Number
Mates With	FCT Standard-Density D-Sub, Size 1, 9 Position, Plug

This document was generated on Mar 09, 2025