



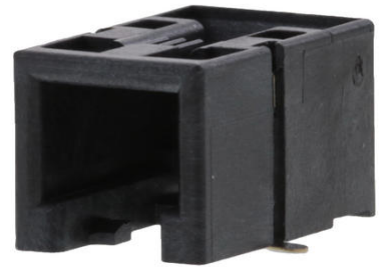
**Part Number :** [855025005](#)

**Product Description :** Modular Jack, Right-Angle, Surface Mount, 4/4, Low Profile, Tape & Reel

**Series Number :** 85502

**Status :** Active

**Product Category :** Modular Jacks and Plugs



---

## Documents and Resources

### Drawings

[855025005\\_sd.pdf](#)

[PK-85502-001.pdf](#)

### 3D Models and Design Files

[STEP AP242](#)

[SOLIDWORKS](#)

[Creo](#)


### Specifications

[PS-95501-001.pdf](#)

---

## Product Environment Compliance

### Compliance

GADSL/IMDS	Not Relevant
China RoHS	 per SJ/T 11365-2006
EU ELV	Not Relevant
Low-Halogen Status	Low-Halogen per IEC 61249-2-21
REACH SVHC	Not Contained per D(2025)7771-DC (04 Feb 2026)
EU RoHS	Compliant per EU 2015/863

### Compliance Statements

- EU RoHS
- REACH SVHC
- Low-Halogen

## Industry Documents

- IPC 1752A Class C
- IPC 1752A Class D
- Molex Product Compliance Declaration
- IEC-62474
- chemSHERPA (xml)

## Substances of Interest

- PFAS

## EU RoHS Certificate of Compliance

## Additional Product Compliance Information

---

## Part Details

### General

Status	Active
Category	Modular Jacks and Plugs
Series	85502
Description	Modular Jack, Right-Angle, Surface Mount, 4/4, Low Profile, Tape & Reel
Comments	Reflow Capable
Component Type	PCB Jack
Magnetic	No
Performance Category	3
Power over Ethernet (PoE)	N/A
Product Name	Modular Jack 4/4
UPC	822350900287

### Agency

UL	E107635
----	---------

### Electrical

Current - Maximum per Contact	1.5A
Shielded	No
Voltage - Maximum	125V DC

### Physical

Boot Color	N/A
Color - Resin	Black
Durability (mating cycles max)	2500
Flammability	94V-0
Inverted / Top Latch	No
Jack Height	11.50mm
Lightpipes/LEDs	None
Material - Metal	Copper Alloy
Material - Plating Mating	Gold over Palladium Nickel
Material - Plating Termination	Tin
Material - Resin	High Temperature Thermoplastic
Net Weight	1.867/g
Orientation	Right Angle (Side Entry)
Packaging Type	Embossed Tape on Reel
PCB Locator	No
PCB Retention	Yes
Pitch - Mating Interface	1.02mm
Pitch - Termination Interface	1.27mm
Plating min - Mating	0.051µm, 0.600µm
Plating min - Termination	1.905µm
Port Configuration	1x1
Positions / Loaded Contacts	4/4
Temperature Range - Operating	-40° to +85°C
Termination Interface Style	Surface Mount
Waterproof / Dustproof	No
Wire/Cable Type	N/A

### Solder Process Data

Max-Duration	45
Lead-Free Process Capability	REFLOW
Max-Cycle	3
Max-Temp	260

---

This document was generated on Jun 14, 2026