

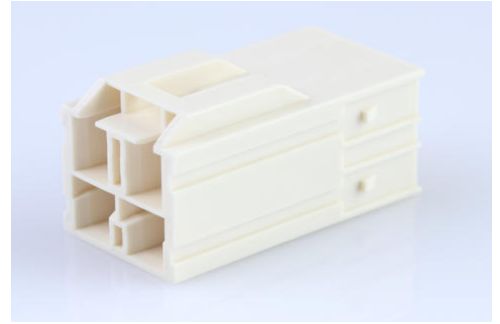
**Part Number :** [2034382411](#)

**Product Description :** CP-6.5 Plug Housing, 6.50mm Pitch, Dual Row, 4 Circuits, Natural, Glow-Wire Capable

**Series Number :** 203438

**Status :** Active

**Product Category :** Connector Housings



---

## Documents and Resources

### Drawings

[2034382411\\_sd.pdf](#)

[2034380001-PK-000.pdf](#)

### 3D Models and Design Files

[STEP AP242](#)

[SOLIDWORKS](#)

[Creo](#)

### Specifications


[2034380001-PS-000.pdf](#)

[2034380001-TS-000.pdf](#)

---

## Product Environment Compliance

### Compliance

GADSL/IMDS	Not Relevant
China RoHS	 per SJ/T 11365-2006
EU ELV	Not Relevant
Low-Halogen Status	Not Low-Halogen per IEC 61249-2-21
REACH SVHC	Contains 1,1'-(Ethane-1,2-diyl)bis[pentabromobenzene] per D(2025)7771-DC (04 Feb 2026)
EU RoHS	Compliant per EU 2015/863

### [Compliance Statements](#)

- EU RoHS
- REACH SVHC
- Low-Halogen

#### Industry Documents

- IPC 1752A Class C
- IPC 1752A Class D
- Molex Product Compliance Declaration
- IEC-62474
- chemSHERPA (xml)

#### Substances of Interest

- PFAS

#### EU RoHS Certificate of Compliance

#### Additional Product Compliance Information

## Part Details

### General

Status	Active
Category	Connector Housings
Series	203438
Description	CP-6.5 Plug Housing, 6.50mm Pitch, Dual Row, 4 Circuits, Natural, Glow-Wire Capable
Application	Power, Wire-to-Wire
Product Name	CP-6.5
UPC	191130084463

### Agency

CSA	LR19980
UL	E29179

### Physical

Circuits (maximum)	4
Color - Resin	Natural
Gender	Plug
Glow-Wire Capable	Yes
Keying to Mating Part	Yes
Lock to Mating Part	Yes

Material - Resin	Nylon
Net Weight	3.277/g
Number of Rows	2
Packaging Type	Bag
Panel Mount	No
Pitch - Mating Interface	6.50mm
Pitch - Termination Interface	6.50mm
Polarized to Mating Part	Yes
Temperature Range - Operating	-40° to +105°C

---

## Mates With / Use With

### Mates with Part(s)

Description	Part Number
CP-6.5 Receptacle Housing, Glow-Wire Capable, 6.50mm Pitch, Dual Row, 4 Circuits, Natural	<u>1512072411</u>

### Use with Part(s)

Description	Part Number
CP-6.5 Terminal Position Assurance (TPA) Retainer, 2 Circuits	<u>511430205</u>
CP-6.5 Wire-to-Wire Male Crimp Terminals	<u>205032</u>

---

This document was generated on May 13, 2026