

# UK 10,3-HESILED N 690 - Fuse modular terminal block



3048399

<https://www.phoenixcontact.com/us/products/3048399>

Please be informed that the data shown in this PDF document is generated from our online catalog. Please find the complete data in the user documentation. Our general terms of use for downloads are valid.



Fuse modular terminal block, fuse type: Glass / ceramics / ..., fuse type: 10.3 x 38 mm, nom. voltage: 690 V, nominal current: 32 A, connection method: Screw connection, Rated cross section: 16 mm<sup>2</sup>, cross section: 1.5 mm<sup>2</sup>- 25 mm<sup>2</sup>, mounting type: NS 35/7,5, NS 35/15, color: black

## Your advantages

- Quick identification of faulty fuses regardless of the current direction, thanks to LED status indicator
- For 10 x 38 fuse-links in accordance with IEC 60269-2
- Fuse holder for fuses up to 690 V AC
- Easy to bridge

## Commercial data

Item number	3048399
Packing unit	10 pc
Minimum order quantity	10 pc
Sales key	BE12
Product key	BE1234
Catalog page	Page 462 (C-1-2017)
GTIN	4017918976309
Weight per piece (including packing)	52.12 g
Weight per piece (excluding packing)	52 g
Customs tariff number	85369095
Country of origin	DE

# UK 10,3-HESILED N 690 - Fuse modular terminal block



3048399

<https://www.phoenixcontact.com/us/products/3048399>

## Technical data

### Product properties

Product type	Fuse terminal block
Number of connections	2
Number of rows	1

### Insulation characteristics

Overvoltage category	III
Degree of pollution	3

### Electrical properties

Fuse type	Glass / ceramics / ...
Rated surge voltage	6 kV
Maximum power dissipation for nominal condition	3 W
Fuse	10.3 x 38 mm
LED voltage range	110 V AC ... 690 V AC (The voltage is determined by the fuse or selected LED display)

### Input data

LED voltage range	110 V AC ... 690 V AC (The voltage is determined by the fuse or selected LED display)
-------------------	---

### Connection data

Number of connections per level	2
Nominal cross section	16 mm <sup>2</sup>

### Level 1 above 1 below 1

Screw thread	M5
Tightening torque	2 ... 2.5 Nm
Stripping length	11 mm
Internal cylindrical gage	B6
Connection in acc. with standard	IEC 60947-1 / -3
Conductor cross section rigid	1.5 mm <sup>2</sup> ... 25 mm <sup>2</sup>
Cross section AWG	14 ... 4 (converted acc. to IEC)
Conductor cross section flexible	1.5 mm <sup>2</sup> ... 25 mm <sup>2</sup>
Conductor cross section, flexible [AWG]	14 ... 4 (converted acc. to IEC)
Conductor cross-section flexible (ferrule without plastic sleeve)	0.75 mm <sup>2</sup> ... 16 mm <sup>2</sup>
Flexible conductor cross section (ferrule with plastic sleeve)	0.75 mm <sup>2</sup> ... 16 mm <sup>2</sup>
Cross-section with insertion bridge, rigid	10 mm <sup>2</sup>
Cross-section with insertion bridge, flexible	10 mm <sup>2</sup>
2 conductors with same cross section, solid	0.75 mm <sup>2</sup> ... 4 mm <sup>2</sup>
2 conductors with same cross section, flexible	0.75 mm <sup>2</sup> ... 4 mm <sup>2</sup>
2 conductors with same cross section, flexible, with ferrule without plastic sleeve	0.75 mm <sup>2</sup> ... 4 mm <sup>2</sup>

# UK 10,3-HESILED N 690 - Fuse modular terminal block



3048399

<https://www.phoenixcontact.com/us/products/3048399>

2 conductors with the same cross section, flexible, with TWIN ferrule with plastic sleeve	0.75 mm <sup>2</sup> ... 10 mm <sup>2</sup>
Nominal current	32 A (the current and voltage are determined by the fuse)
Maximum load current	32 A (the current and voltage are determined by the fuse)
Nominal voltage	690 V (the current and voltage are determined by the fuse)
Nominal cross section	16 mm <sup>2</sup>

## Dimensions

Width	18 mm
Height	86.7 mm
Depth on NS 35/7,5	65.5 mm
Depth on NS 35/15	73 mm

## Material specifications

Color	black
Flammability rating according to UL 94	V2
Insulating material group	IIIb
Relative insulation material temperature index (Elec., UL 746 B)	125 °C

## Mechanical properties

### Mechanical data

Open side panel	No
-----------------	----

## Environmental and real-life conditions

### Ambient conditions

Ambient temperature (operation)	-60 °C ... 85 °C (max. short-term operating temperature RTI Elec. )
Ambient temperature (storage/transport)	-25 °C ... 55 °C (for a short time, not exceeding 24 h, -60 °C to +70 °C)
Ambient temperature (assembly)	-5 °C ... 70 °C
Ambient temperature (actuation)	-5 °C ... 70 °C
Permissible humidity (operation)	20 % ... 90 %
Permissible humidity (storage/transport)	30 % ... 70 %

## Standards and regulations

Connection in acc. with standard	IEC 60947-1 / -3
----------------------------------	------------------

## Mounting

Mounting type	NS 35/7,5
	NS 35/15

# UK 10,3-HESILED N 690 - Fuse modular terminal block



3048399

<https://www.phoenixcontact.com/us/products/3048399>

## Drawings

Circuit diagram



# UK 10,3-HESILED N 690 - Fuse modular terminal block





3048399


<https://www.phoenixcontact.com/us/products/3048399>


## Approvals


To download certificates, visit the product detail page: <https://www.phoenixcontact.com/us/products/3048399>

 <b>CSA</b> Approval ID: 225908				
	Nominal voltage $U_N$	Nominal current $I_N$	Cross section AWG	Cross section $mm^2$
	600 V	30 A	18 - 3	-
Multi-conductor connection	600 V	30 A	18 - 6	-

 <b>EAC</b> Approval ID: RU C-DE.A*30.B.01742				
---	--	--	--	--

 <b>EAC</b> Approval ID: RU C-DE.BL08.B.00534				
--	--	--	--	--

 <b>UL Listed</b> Approval ID: FILE E 244294				
	Nominal voltage $U_N$	Nominal current $I_N$	Cross section AWG	Cross section $mm^2$
	600 V	30 A	-	18 - 3
Multi-conductor connection	600 V	30 A	-	18 - 6

 <b>cUL Listed</b> Approval ID: FILE E 244294				
	Nominal voltage $U_N$	Nominal current $I_N$	Cross section AWG	Cross section $mm^2$
	600 V	30 A	18 - 3	-
Multi-conductor connection	600 V	30 A	18 - 6	-

<b>cULus Listed</b>				
---------------------	--	--	--	--

# UK 10,3-HESILED N 690 - Fuse modular terminal block



3048399

<https://www.phoenixcontact.com/us/products/3048399>

## Classifications

### ECLASS

ECLASS-11.0	27141116
ECLASS-12.0	27141116
ECLASS-13.0	27250113

### ETIM

ETIM 9.0	EC000899
----------	----------

### UNSPSC

UNSPSC 21.0	39121400
-------------	----------

# UK 10,3-HESILED N 690 - Fuse modular terminal block



3048399

<https://www.phoenixcontact.com/us/products/3048399>

## Environmental product compliance

### EU RoHS

Fulfills EU RoHS substance requirements	Yes, No exemptions
---	--------------------

### China RoHS

Environment friendly use period (EFUP)	EFUP-E
	No hazardous substances above the limits

### EU REACH SVHC

REACH candidate substance (CAS No.)	No substance above 0.1 wt%
-------------------------------------	----------------------------

# UK 10,3-HESILED N 690 - Fuse modular terminal block

3048399

<https://www.phoenixcontact.com/us/products/3048399>

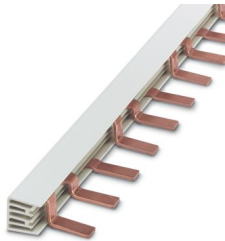
## Accessories

**i** Note: Applying some accessories below might limit this product.

### EB 56-18/L1-L2-L3 - Insertion bridge

3009367

<https://www.phoenixcontact.com/us/products/3009367>



Insertion bridge, pitch: 18 mm, number of positions: 56, color: gray

**i** Max. current carrying capacity: 76 A

---

### EB 56-18 - Insertion bridge

3009299

<https://www.phoenixcontact.com/us/products/3009299>



Insertion bridge, pitch: 18 mm, number of positions: 56, color: gray

**i** Max. current carrying capacity: 76 A

# UK 10,3-HESILED N 690 - Fuse modular terminal block



3048399

<https://www.phoenixcontact.com/us/products/3048399>

## EB 2-18 - Insertion bridge

3009300

<https://www.phoenixcontact.com/us/products/3009300>

Insertion bridge, pitch: 17.8 mm, number of positions: 2, color: light gray



 Max. current carrying capacity: 76 A

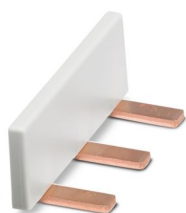
---

## EB 3-18 - Insertion bridge

3009305

<https://www.phoenixcontact.com/us/products/3009305>

Insertion bridge, pitch: 17.8 mm, number of positions: 3, color: light gray



 Max. current carrying capacity: 76 A

# UK 10,3-HESILED N 690 - Fuse modular terminal block



3048399

<https://www.phoenixcontact.com/us/products/3048399>

## VS-UK 10,3-HESI N 2POL - Connection pin

3048532

<https://www.phoenixcontact.com/us/products/3048532>



Connection pin, plastic, for coupling two fuse terminal blocks, color: white, diameter: 3 mm

---

## VS-UK 10,3-HESI N 3POL - Connection pin

3048409

<https://www.phoenixcontact.com/us/products/3048409>



Connection pin, plastic, for coupling three fuse terminal blocks, color: white, diameter: 3 mm

# UK 10,3-HESILED N 690 - Fuse modular terminal block



3048399

<https://www.phoenixcontact.com/us/products/3048399>

## NS 35/ 7,5 PERF 2000MM - DIN rail perforated

0801733

<https://www.phoenixcontact.com/us/products/0801733>



DIN rail perforated, Pack of 25 (50 m), acc. to EN 60715, material: Steel, galvanized, passivated with a thick layer, Standard profile, color: silver

---

## NS 35/ 7,5 UNPERF 2000MM - DIN rail, unperforated

0801681

<https://www.phoenixcontact.com/us/products/0801681>



DIN rail, unperforated, Pack of 25 (50 m), acc. to EN 60715, material: Steel, galvanized, passivated with a thick layer, Standard profile, color: silver

# UK 10,3-HESILED N 690 - Fuse modular terminal block



3048399

<https://www.phoenixcontact.com/us/products/3048399>

## NS 35/ 7,5 WH PERF 2000MM - DIN rail perforated

1204119

<https://www.phoenixcontact.com/us/products/1204119>



DIN rail perforated, Pack of 25 (50 m), acc. to EN 60715, material: Steel, Galvanized, white passivated, Standard profile, color: silver

---

## NS 35/ 7,5 WH UNPERF 2000MM-VPE 10 - DIN rail, unperforated

1204122

<https://www.phoenixcontact.com/us/products/1204122>



DIN rail, unperforated, Pack of 10 (20 m), acc. to EN 60715, material: Steel, Galvanized, white passivated, Standard profile, color: silver

# UK 10,3-HESILED N 690 - Fuse modular terminal block



3048399

<https://www.phoenixcontact.com/us/products/3048399>

## NS 35/ 7,5 AL UNPERF 2000MM - DIN rail, unperforated

0801704

<https://www.phoenixcontact.com/us/products/0801704>



DIN rail, unperforated, Pack of 25 (50 m), acc. to EN 60715, material: Aluminum, uncoated, Standard profile, color: silver

---

## NS 35/ 7,5 ZN PERF 2000MM - DIN rail perforated

1206421

<https://www.phoenixcontact.com/us/products/1206421>



DIN rail perforated, Pack of 25 (50 m), acc. to EN 60715, material: Steel, galvanized, Standard profile, color: silver

# UK 10,3-HESILED N 690 - Fuse modular terminal block



3048399

<https://www.phoenixcontact.com/us/products/3048399>

## NS 35/ 7,5 ZN UNPERF 2000MM - DIN rail, unperforated

1206434

<https://www.phoenixcontact.com/us/products/1206434>



DIN rail, unperforated, Pack of 25 (50 m), acc. to EN 60715, material: Steel, galvanized, Standard profile, color: silver

---

## NS 35/ 7,5 CU UNPERF 2000MM-VPE 10 - DIN rail, unperforated

0801762

<https://www.phoenixcontact.com/us/products/0801762>



DIN rail, unperforated, Pack of 10 (20 m), acc. to EN 60715, material: Copper, uncoated, Standard profile, color: copper-colored

# UK 10,3-HESILED N 690 - Fuse modular terminal block



3048399

<https://www.phoenixcontact.com/us/products/3048399>

## NS 35/ 7,5 CAP - End cap

1206560

<https://www.phoenixcontact.com/us/products/1206560>

DIN rail end piece, for DIN rail NS 35/7.5



---

## NS 35/15 PERF 2000MM - DIN rail perforated

1201730

<https://www.phoenixcontact.com/us/products/1201730>



DIN rail perforated, Pack of 25 (50 m), similar to EN 60715, material: Steel, galvanized, passivated with a thick layer, Standard profile, color: silver

# UK 10,3-HESILED N 690 - Fuse modular terminal block



3048399

<https://www.phoenixcontact.com/us/products/3048399>

## NS 35/15 UNPERF 2000MM - DIN rail, unperforated

1201714

<https://www.phoenixcontact.com/us/products/1201714>



DIN rail, unperforated, Pack of 25 (50 m), similar to EN 60715, material: Steel, galvanized, passivated with a thick layer, Standard profile, color: silver

---

## NS 35/15 WH PERF 2000MM - DIN rail perforated

0806602

<https://www.phoenixcontact.com/us/products/0806602>



DIN rail perforated, Pack of 25 (50 m), similar to EN 60715, material: Steel, Galvanized, white passivated, Standard profile, color: white

# UK 10,3-HESILED N 690 - Fuse modular terminal block



3048399

<https://www.phoenixcontact.com/us/products/3048399>

## NS 35/15 WH UNPERF 2000MM-VPE 10 - DIN rail, unperforated

1204135

<https://www.phoenixcontact.com/us/products/1204135>



DIN rail, unperforated, Pack of 10 (20 m), similar to EN 60715, material: Steel, Galvanized, white passivated, Standard profile, color: silver

---

## NS 35/15 AL UNPERF 2000MM - DIN rail, unperforated

1201756

<https://www.phoenixcontact.com/us/products/1201756>



DIN rail, unperforated, similar to EN 60715, material: Aluminum, uncoated, Standard profile, color: silver

# UK 10,3-HESILED N 690 - Fuse modular terminal block



3048399

<https://www.phoenixcontact.com/us/products/3048399>

## NS 35/15 ZN PERF 2000MM - DIN rail perforated

1206599

<https://www.phoenixcontact.com/us/products/1206599>



DIN rail perforated, Pack of 25 (50 m), similar to EN 60715, material: Steel, galvanized, Standard profile, color: silver

---

## NS 35/15 ZN UNPERF 2000MM - DIN rail, unperforated

1206586

<https://www.phoenixcontact.com/us/products/1206586>



DIN rail, unperforated, Pack of 25 (50 m), similar to EN 60715, material: Steel, galvanized, Standard profile, color: silver

# UK 10,3-HESILED N 690 - Fuse modular terminal block



3048399

<https://www.phoenixcontact.com/us/products/3048399>

## NS 35/15 CU UNPERF 2000MM-VPE 10 - DIN rail, unperforated

1201895

<https://www.phoenixcontact.com/us/products/1201895>



DIN rail, unperforated, Pack of 10 (20 m), similar to EN 60715, material: Copper, uncoated, Standard profile, color: copper-colored

---

## NS 35/15 CAP - End cap

1206573

<https://www.phoenixcontact.com/us/products/1206573>

DIN rail end piece, for DIN rail NS 35/15



# UK 10,3-HESILED N 690 - Fuse modular terminal block



3048399

<https://www.phoenixcontact.com/us/products/3048399>

## NS 35/15-2,3 UNPERF 2000MM-VPE 10 - DIN rail, unperforated

1201798

<https://www.phoenixcontact.com/us/products/1201798>



DIN rail, unperforated, Pack of 10 (20 m), acc. to EN 60715, material: Steel, galvanized, passivated with a thick layer, Standard profile 2.3 mm, color: silver

---

## ZBF10:UNBEDRUCKT - Zack Marker strip, flat

0809997

<https://www.phoenixcontact.com/us/products/0809997>



Zack Marker strip, flat, Strip, white, unlabeled, can be labeled with: CMS-P1-PLOTTER, PLOTMARK, mounting type: snapped, for terminal block width: 10 mm, lettering field size: 5.15 x 10 mm, Number of individual labels: 10

# UK 10,3-HESILED N 690 - Fuse modular terminal block



3048399

<https://www.phoenixcontact.com/us/products/3048399>

## ZBF10 CUS - Zack Marker strip, flat

0825031

<https://www.phoenixcontact.com/us/products/0825031>



Zack Marker strip, flat, can be ordered: Strip, white, labeled according to customer specifications, mounting type: snap into flat marker groove, for terminal block width: 10 mm, lettering field size: 5.15 x 10 mm, Number of individual labels: 10

---

## ZBF10,LGS:FORTL.ZAHLEN - Zack Marker strip, flat

0810009

<https://www.phoenixcontact.com/us/products/0810009>



Zack Marker strip, flat, Strip, white, labeled, printed horizontally: consecutive numbers 1 ... 10, 11 ... 20, etc. up to 91 ... 100, mounting type: snapped, for terminal block width: 10 mm, lettering field size: 5.15 x 10 mm, Number of individual labels: 10

# UK 10,3-HESILED N 690 - Fuse modular terminal block



3048399

<https://www.phoenixcontact.com/us/products/3048399>

## ZBF10,QR:FORTL.ZAHLEN - Zack Marker strip, flat

0810025

<https://www.phoenixcontact.com/us/products/0810025>



Zack Marker strip, flat, Strip, white, labeled, Printed vertically: consecutive numbers 1 ... 10, 11 ... 20, etc. up to 91 ... 100, mounting type: snapped, for terminal block width: 10 mm, lettering field size: 5.15 x 10 mm, Number of individual labels: 10

---

## UC-TMF 10 - Marker for terminal blocks

0818124

<https://www.phoenixcontact.com/us/products/0818124>



Marker for terminal blocks, Sheet, white, unlabeled, can be labeled with: BLUEMARK ID COLOR, BLUEMARK ID, BLUEMARK CLED, PLOTMARK, CMS-P1-PLOTTER, mounting type: snapped, for terminal block width: 10.2 mm, lettering field size: 9.6 x 5.1 mm, Number of individual labels: 48

# UK 10,3-HESILED N 690 - Fuse modular terminal block



3048399

<https://www.phoenixcontact.com/us/products/3048399>

## UC-TMF 10 CUS - Marker for terminal blocks

0824662

<https://www.phoenixcontact.com/us/products/0824662>



Marker for terminal blocks, can be ordered: by sheet, white, labeled according to customer specifications, mounting type: snap into flat marker groove, for terminal block width: 10.2 mm, lettering field size: 9.6 x 5.1 mm, Number of individual labels: 48

---

## UCT-TMF 10 - Marker for terminal blocks

0829204

<https://www.phoenixcontact.com/us/products/0829204>



Marker for terminal blocks, Sheet, white, unlabeled, can be labeled with: TOPMARK NEO, TOPMARK LASER, BLUEMARK ID COLOR, BLUEMARK ID, BLUEMARK CLED, THERMOMARK PRIME, THERMOMARK CARD 2.0, THERMOMARK CARD, mounting type: snapped, for terminal block width: 10.2 mm, lettering field size: 9.4 x 4.7 mm, Number of individual labels: 36

# UK 10,3-HESILED N 690 - Fuse modular terminal block



3048399

<https://www.phoenixcontact.com/us/products/3048399>

## UCT-TMF 10 CUS - Marker for terminal blocks

0829679

<https://www.phoenixcontact.com/us/products/0829679>



Marker for terminal blocks, can be ordered: by sheet, white, labeled according to customer specifications, mounting type: snap into flat marker groove, for terminal block width: 10.2 mm, lettering field size: 9.4 x 4.7 mm, Number of individual labels: 36

---

## CLIPFIX 35 - End bracket

3022218

<https://www.phoenixcontact.com/us/products/3022218>



Quick mounting end clamp for NS 35/7,5 DIN rail or NS 35/15 DIN rail, with marking option, width: 9.5 mm, color: gray

# UK 10,3-HESILED N 690 - Fuse modular terminal block



3048399

<https://www.phoenixcontact.com/us/products/3048399>

## CLIPFIX 35-5 - End bracket

3022276

<https://www.phoenixcontact.com/us/products/3022276>



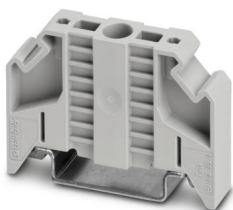
Quick mounting end clamp for NS 35/7,5 DIN rail or NS 35/15 DIN rail, with marking option, with parking option for FBS...5, FBS...6, KSS 5, KSS 6, width: 5.15 mm, color: gray

---

## E/NS 35 N - End bracket

0800886

<https://www.phoenixcontact.com/us/products/0800886>



End clamp, width: 9.5 mm, color: gray

# UK 10,3-HESILED N 690 - Fuse modular terminal block



3048399

<https://www.phoenixcontact.com/us/products/3048399>

## SF-SL 0,6X3,5-100 S-VDE - Screwdriver

1212587

<https://www.phoenixcontact.com/us/products/1212587>



Actuation tool, for ST terminal blocks, VDE insulated, with slimmer insulation integrated in the blade, also suitable for use as a bladed screwdriver, size: 0.6 x 3.5 x 100 mm, 2-component grip, with non-slip grip

---

Phoenix Contact 2024 © - all rights reserved

<https://www.phoenixcontact.com>

Phoenix Contact USA  
586 Fulling Mill Road  
Middletown, PA 17057, United States  
(+717) 944-1300  
[info@phoenixcon.com](mailto:info@phoenixcon.com)