



**Part Number :** [1731071289](#)

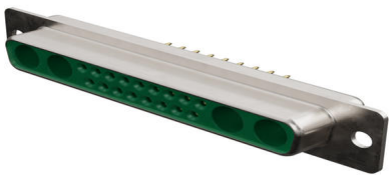
**Product Description :** FCT Mixed Layout D-Sub Connector, Female, Straight, PCB Through Hole, Gold over Nickel Phosphorus Plating, Tin-plated Shell, 21 Circuits Max, 17 Signal Contacts Loaded, Green Insulator

**Series Number :** 173107

**Status :** Active

**Product Category :** D-Sub Connectors

**Engineering Number :** FM21WA4S1A-K121



## Documents & Resources

### Drawings

[1731071289 sd.pdf](#)

[STEP AP242](#)


[SOLIDWORKS](#)

[Creo](#)

[Symbol and Footprint \(Multi-Format\)](#)

## Product Environment Compliance

### Compliance

GADSL/IMDS	Not Relevant
China RoHS	 per SJ/T 11365-2006
EU ELV	Not Relevant
Low-Halogen Status	Not Reviewed per IEC 61249-2-21
REACH SVHC	Not Reviewed per D(2024)7663-DC (21 Jan 2025)
EU RoHS	Compliant with Exemption 6(c) per EU 2015/863

### Compliance Statements

- EU RoHS
- REACH SVHC

- Low-Halogen

#### Industry Documents

- IPC 1752A Class C
- IPC 1752A Class D
- Molex Product Compliance Declaration
- IEC-62474
- chemSHERPA (xml)

#### Substances of Interest

- PFAS

#### EU RoHS Certificate of Compliance

#### Additional Product Compliance Information

## Part Details

### General

Status	Active
Category	D-Sub Connectors
Series	173107
Description	FCT Mixed Layout D-Sub Connector, Female, Straight, PCB Through Hole, Gold over Nickel Phosphorus Plating, Tin-plated Shell, 21 Circuits Max, 17 Signal Contacts Loaded, Green Insulator
IP Rating	IP20
Magnetic	Yes
Product Name	FCT Products
Type	Mixed Layout
UPC	191130143740

### Electrical

Current - Maximum per Contact	7.5A
Shielded	Yes

### Physical

Circuits (Loaded)	17
Circuits (maximum)	21
Color - Resin	Green

Durability (mating cycles min)	500
Gender	Female
Material - Contact	Copper Alloy
Material - Resin	PBT
Material - Shell	Steel
Net Weight	13.200/g
Number of Rows	2
Orientation	Straight
Packaging Type	Carton
Panel Mount	Rear
Panel Mount Method	Flange
PCB Locator	Yes
PCB Retention	Yes
PCB Thickness - Recommended	1.60mm
PC Tail Length	10.30mm
Pitch - Mating Interface	2.84mm
Pitch - Termination Interface	2.84mm
Plating - Contact	Gold over Nickel Phosphorus
Plating - Shell	Tin
Polarized to Mating Part	Yes
Polarized to PCB	Yes
Ports	1
Temperature Range - Operating	-55° to +130°C
Termination Style	Through Hole
Waterproof / Dustproof	No
Waterproof / Dustproof Type	IP20

---

## Mates With / Use With

### Mates with Part(s)

Description	Part Number
Mates With	FCT Mixed Layout D-Sub, Size 4, 21WA4, Plug

### Use with Part(s)

Description	Part Number
Use With	FCT Coaxial, High Power, High Voltage, or Pneumatic Contacts

---

This document was generated on Sep 10, 2025