



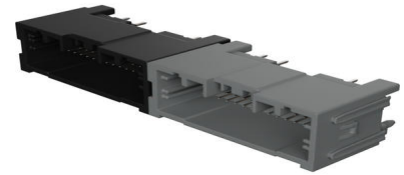
Part Number : [349601200](#)

Product Description : Mini50 Unsealed 2 Bay Vertical Headers, 68 Circuits, Bay A 34 Circuit Hybrid, Polarization A, Black; Bay B 34 Circuit Hybrid, Polarization B, Gray; Tray

Series Number : 34960

Status : Active

Product Category : PCB Headers and Receptacles



Documents and Resources

Drawings

[349601200 sd.pdf](#)

3D Models and Design Files

[STEP AP242](#)

[SOLIDWORKS](#)

[Creo](#)

[Symbol and Footprint \(Multi-Format\)](#)

Specifications


[349590001-AS-CH-000.pdf](#)

[PS-34959-001-001.pdf](#)

[TS-34961-001-001.pdf](#)

Product Environment Compliance

Compliance

GADSL/IMDS	Compliant with Exemption 44; 33
China RoHS	 per SJ/T 11365-2006
EU ELV	Compliant per 2000/53/EC
Low-Halogen Status	Low-Halogen per IEC 61249-2-21
REACH SVHC	Not Contained per D(2025)6375-DC (05 Nov 2025)
EU RoHS	Compliant per EU 2015/863

Compliance Statements

- EU RoHS
- REACH SVHC
- Low-Halogen

Industry Documents

- IPC 1752A Class C
- IPC 1752A Class D
- Molex Product Compliance Declaration
- IEC-62474
- chemSHERPA (xml)

Substances of Interest

- PFAS

EU RoHS Certificate of Compliance

Additional Product Compliance Information

Part Details

General

Status	Active
Category	PCB Headers and Receptacles
Series	34960
Description	Mini50 Unsealed 2 Bay Vertical Headers, 68 Circuits, Bay A 34 Circuit Hybrid, Polarization A, Black; Bay B 34 Circuit Hybrid, Polarization B, Gray; Tray
Application	Automotive, Power, Signal, Wire-to-Board
Comments	0.50mm blades = 4.0A; 1.20mm blades = 16.0A
Component Type	PCB Header
Product Name	Mini50
UPC	887191714974

Electrical

Current - Maximum per Contact	16.0A, 4.0A
Voltage - Maximum	500V DC

Physical

Breakaway	No
Circuits (Loaded)	68
Circuits (maximum)	68
Color - Resin	Black, Gray
Durability (mating cycles max)	10
First Mate / Last Break	No
Glow-Wire Capable	No
Guide to Mating Part	No
Keying to Mating Part	Yes
Lock to Mating Part	Yes
Material - Metal	Brass
Material - Plating Mating	Tin
Material - Plating Termination	Tin
Material - Resin	SPS
Net Weight	13.340/g
Number of Rows	3
Orientation	Vertical
Packaging Type	Tray
PCB Locator	Yes
PCB Retention	None
PC Tail Length	2.75mm
Pitch - Mating Interface	2.00mm
Polarized to Mating Part	Yes
Polarized to PCB	Yes
Stackable	Yes
Temperature Range - Operating	-40° to +105°C
Termination Interface Style	Through Hole

Mates With / Use With

Mates with Part(s)

Description	Part Number
Mini50 Unsealed Receptacle Housings	<u>34959</u>

This document was generated on Dec 30, 2025