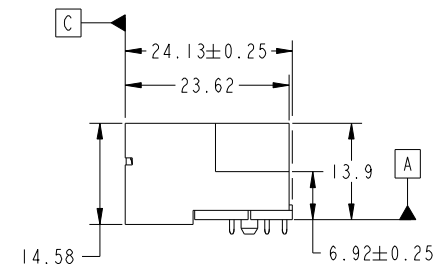


All rights strictly reserved. Reproduction or issue to third parties in any form whatever is not permitted without written authority from the proprietor. Property of FCI. Copyright FCI.

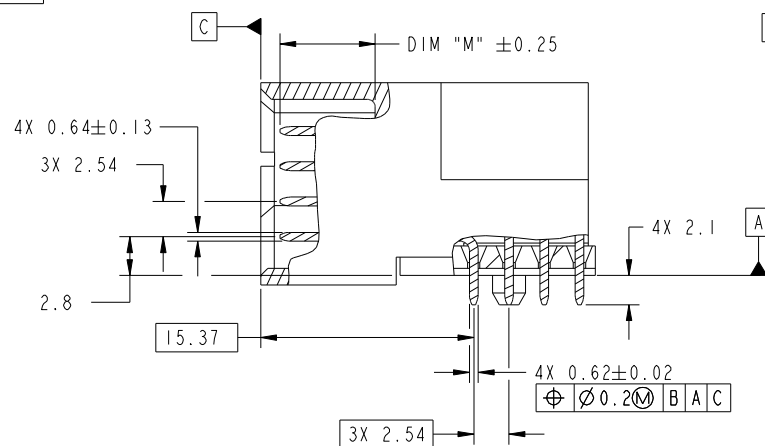
[illegible]

Tous droits strictement réservés. Reproduction ou communication a des tiers interdite sous quelque forme que ce soit sans autorisation écrite du propriétaire. Propriété de c FCI. Droits de reproduction FCI.

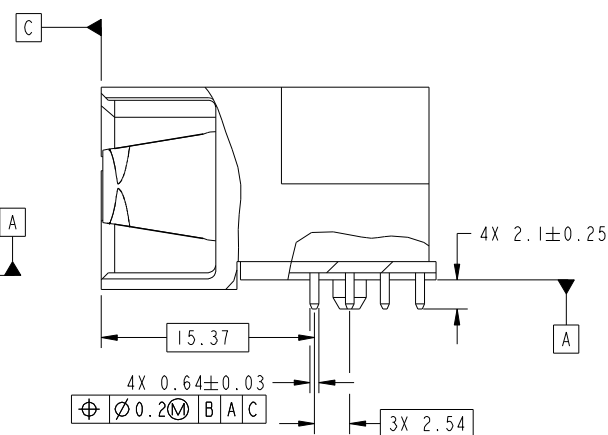


All rights strictly reserved. Reproduction or issue to third parties in any form whatever is not permitted without written authority from the proprietor. Property of FCI. Copyright FCI.

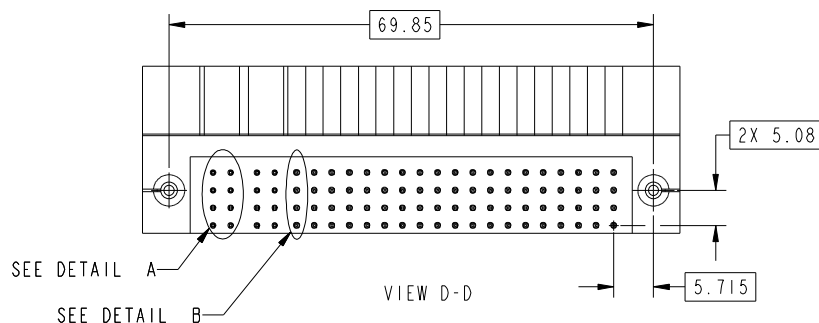
PRODUCT NUMBER
51939-343--
NOTE: 3



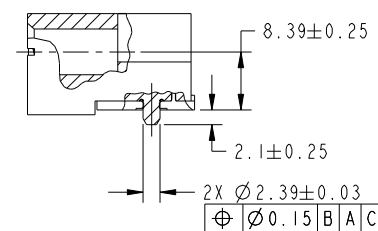
BROKEN-OUT SECTION A-A
SCALE 2:1



BROKEN-OUT SECTION B-B
SCALE 2:1



VIEW D-D



LOCAL SECTION C-C

mat'l code				SEE NOTE		tolerances unless otherwise specified		CUSTOMER		FCI	
litr	ecn no.	dr	date			linear	0.X ±0.3	COPY		www.fciconnect.com	
A						angles	0.XX ±0.13	projection		title	
							0.XXX ±0.051			2P + 76S	
						dr	0° ±2°			RIGHT ANGLE SOLDER HEADER	
						enrg	Jerome Chen 02/21/08			product family	PwrBlade
						chr	Jerome Chen 02/21/08			size	213
						appd	Gary Hsieh 02/21/08			dwg no	51939-343
							Joseph Hsia 02/21/08			sheet	2 of 5
sheet index	revision sheet							scale	1:1		

cage code 22526

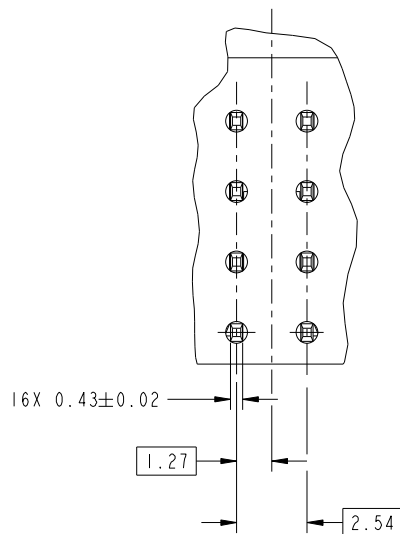
Pro/E

Tous droits strictement reserves. Reproduction ou communication a des tiers interdite sous quelque forme que ce soit sans autorisation écrite du propriétaire. Propriete de c FCI. Droits de reproduction FCI.

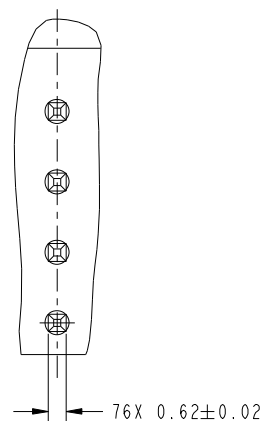


All rights strictly reserved. Reproduction or issue to third parties in any form whatever is not permitted without written authority from the proprietor. Property of FCI. Copyright FCI.

PRODUCT NUMBER
51939-343--
NOTE: 3



POWER CONTACT ONLY (PI, P2)
DETAIL A
SCALE 4:1



SIGNAL CONTACT ONLY (AI, ..., DI9)
DETAIL B
SCALE 4:1

mat'l code				SEE NOTE		tolerances unless otherwise specified		CUSTOMER		FCI	
litr	ecn no.	dr	date					COPY		www.fciconnect.com	
A				linear		0.X ±0.3		projection		title 2P + 76S RIGHT ANGLE SOLDER HEADER	
						0.XX ±0.13					
				angles		0.XXX ±0.051				product family PwrBlade code	
						0° ±2°					
				dr	Jerome Chen	02/21/08		MIM		size	213
				engr	Jerome Chen	02/21/08				dwg no	3
				chr	Gary Hsieh	02/21/08		scale		51939-343	
				appd	Joseph Hsia	02/21/08		1:1			
sheet index	revision sheet									cage code 22526	

Pro/E

cage code 22526

All rights strictly reserved. Reproduction or issue to third parties in any form whatever is not permitted without written authority from the proprietor. Property of FCI. Copyright FCI.



Tous droits strictement reserves. Reproduction ou communication a des tiers interdite sous quelque forme que ce soit sans autorisation écrite du propriétaire. Propriete de c FCI. Droits de reproduction FCI.

A



All rights strictly reserved. Reproduction or issue to third parties in any form whatever is not permitted without written authority from the proprietor. Property of FCI. Copyright FCI.

B

PRODUCT NUMBER
51939-343-- NOTE: 3

NOTES:

1. DIMENSIONS AND TOLERANCES ARE IN ACCORDANCE WITH
ASME Y14.5M, 1994 UNLESS OTHERWISE SPECIFIED.

CONNECTOR NOTES:

2. HOUSING MATERIAL: UL 94 V-0 GLASS FILLED HIGH-TEMP THERMOPLASTIC WHICH CAN WITHSTAND NORMAL PIP PROCESS.
POWER CONTACT MATERIAL: COPPER ALLOY
SIGNAL PIN MATERIAL: COPPER ALLOY
3. SEE ITEM 1 & 2 IN PRINT 10064183 FOR PLATING SPEC OF 51939-343 AND 51939-343LF RESPECTIVELY.
4. MANUFACTURER'S NAME, P/N, AND DATE CODE TO APPEAR ON THIS SURFACE.
5. PRODUCT SPECIFICATION GS-12-149.
APPLICATION SPECIFICATION BUS-20-067.
6. PACKAGED IN HARD TRAYS, SEE PRINT OF 10094543 FOR PACKAGING SPECIFICATION.

PCB NOTES:

7. ALL HOLE DIAMETERS ARE FINISHED HOLE SIZE.
8. MOUNTING HOLES, WHERE APPLICABLE, ARE UNPLATED.
9. $\varnothing 1.151 \pm 0.025$ DRILLED HOLES PLATED WITH 0.008 MIN SnPb OR Sn OVER 0.03
TO 0.08 Cu PLATING TO ACHIEVE $\varnothing 1.02 \pm 0.07$ HOLE.
10. "DIM XXX" TO BE DETERMINED BY THE CUSTOMER.
11. CONNECTOR KEEP-OUT ZONE.

mat'l code				SEE NOTE		tolerances unless otherwise specified		CUSTOMER		FCI	
litr	ecn no.	dr	date					COPY		www.fciconnect.com	
A				linear		$0.X \pm 0.3$		projection		title	
						$0.XX \pm 0.13$				2P + 76S	
				angles		$0.XXX \pm 0.051$				RIGHT ANGLE SOLDER HEADER	
						$0^\circ \pm 2^\circ$					
				dr	Jerome Chen	02/21/08		MIM		product family	PwrBlade
				enrg	Jerome Chen	02/21/08				size	213
				chr	Gary Hsieh	02/21/08		scale		dwg no	51939-343
				appd	Joseph Hsia	02/21/08		1:1	A	sheet	5 of 5
sheet index	revision sheet										

A

B

1 | 2

Pro/E

3 |

cage code 22526

4