



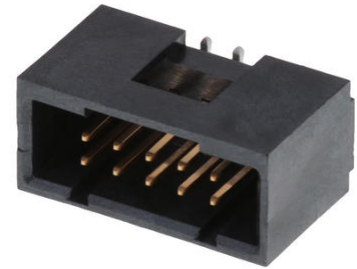
**Part Number :** [713491037](#)

**Product Description :** 2.54mm Pitch C-Grid Header, Surface Mount, Dual Row, Vertical, Shrouded, 10 Circuits, 0.38µm Gold (Au) Selective Plating, without Press-fit Plastic Pegs

**Series Number :** 71349

**Status :** Active

**Product Category :** PCB Headers and Receptacles



---

## Documents and Resources

### Drawings

[713491037\\_sd.pdf](#)

[PK-70873-0018-001.pdf](#)

### 3D Models and Design Files

[STEP AP242](#)

[SOLIDWORKS](#)

[Creo](#)

[Symbol and Footprint \(Multi-Format\)](#)

### Specifications


[713080001-AS-000.pdf](#)

[PS-71349-001-001.pdf](#)

---

## Product Environment Compliance

### Compliance

|                    |   |
|--------------------|---|
| GADSL/IMDS         | Not Relevant  |
| China RoHS         |  per SJ/T 11365-2006 |
| EU ELV             | Not Relevant  |
| Low-Halogen Status | Low-Halogen per IEC 61249-2-21  |
| REACH SVHC         | Not Contained per D(2025)7771-DC (04 Feb 2026)  |
| EU RoHS            | Compliant per EU 2015/863   |

### Compliance Statements

- EU RoHS
- REACH SVHC
- Low-Halogen

### Industry Documents

- IPC 1752A Class C
- IPC 1752A Class D
- Molex Product Compliance Declaration
- IEC-62474
- chemSHERPA (xml)

### Substances of Interest

- PFAS

### EU RoHS Certificate of Compliance

### Additional Product Compliance Information

---

## Part Details

### General

|                |  |
|----------------|--|
| Status         | Active   |
| Category       | PCB Headers and Receptacles  |
| Series         | 71349  |
| Description    | 2.54mm Pitch C-Grid Header, Surface Mount, Dual Row, Vertical, Shrouded, 10 Circuits, 0.38µm Gold (Au) Selective Plating, without Press-fit Plastic Pegs |
| Application    | Wire-to-Board  |
| Component Type | PCB Header   |
| Product Name   | C-Grid   |
| UPC            | 800753524415   |

### Agency

|    |        |
|----|--------|
| UL | E29179 |
|----|--------|

### Electrical

|                               |      |
|-------------------------------|------|
| Current - Maximum per Contact | 3.0A |
| Voltage - Maximum             | 250V |

## Physical

|                                |                                |
|--------------------------------|--------------------------------|
| Breakaway                      | No                             |
| Circuits (Loaded)              | 10                             |
| Circuits (maximum)             | 10                             |
| Color - Resin                  | Black                          |
| Durability (mating cycles max) | 50                             |
| First Mate / Last Break        | No                             |
| Gender                         | Male                           |
| Glow-Wire Capable              | No                             |
| Guide to Mating Part           | No                             |
| Keying to Mating Part          | No                             |
| Lock to Mating Part            | Yes                            |
| Material - Metal               | Brass, Phosphor Bronze         |
| Material - Plating Mating      | Gold                           |
| Material - Plating Termination | Tin                            |
| Material - Resin               | High Temperature Thermoplastic |
| Net Weight                     | 2.356/g                        |
| Number of Rows                 | 2                              |
| Orientation                    | Vertical                       |
| Packaging Type                 | Tube                           |
| PCB Locator                    | No                             |
| PCB Retention                  | No                             |
| Pitch - Mating Interface       | 2.54mm                         |
| Pitch - Termination Interface  | 2.54mm                         |
| Plating min - Mating           | 0.381µm                        |
| Plating min - Termination      | 1.905µm                        |
| Polarized to Mating Part       | Yes                            |
| Shrouded                       | Shrouded                       |
| Stackable                      | No                             |
| Temperature Range - Operating  | -40° to +105°C                 |
| Termination Interface Style    | Surface Mount                  |

## Solder Process Data

|                              |        |
|------------------------------|--------|
| Max-Duration                 | 30     |
| Lead-Free Process Capability | REFLOW |

|           |     |
|-----------|-----|
| Max-Cycle | 3   |
| Max-Temp  | 245 |

---

## Mates With / Use With

### Mates with Part(s)

| Description   | Part Number  |
|---|--------------|
| 2.54mm SL Interim Clips   | <u>70013</u> |
| SL Dual Row Crimp Housings  | <u>70450</u> |
| C-Grid Vertical, Dual Row, High Profile, Surface Mount PCB Connectors | <u>71395</u> |
| C-Grid Vertical, Dual Row, High Profile, Through Hole PCB Receptacles | <u>71850</u> |

---

This document was generated on May 25, 2026