

AMPHENOL PART NUMBER CONFIGURATION

U90 - A 2 X 1 - 1 X X X

HEAT SINK OPTION

- 1** = NO HEAT SINK AND NO CLIP SHIPPED
- P** = PIN STYLE HEAT SINK (NICKEL PLATED) AND CLIP (H=6.5mm; SAN HEIGHT)
- A** = PIN STYLE HEAT SINK (NICKEL PLATED) AND CLIP (H=4.2mm; PCI HEIGHT)
- N** = PIN STYLE HEAT SINK (NICKEL PLATED) AND CLIP (H=13.5mm; TALL)
- Y** = NO HEAT SINK AND WITH CLIP SHIPPED AS LOOSE PIECE
- D** = PIN-FIN HEAT SINK (ANODIZED, BLACK) AND CLIP (H=6.5mm; SAN HEIGHT)
- P** = PIN-FIN HEAT SINK (ANODIZED, BLACK) AND CLIP (H=4.2mm; PCI HEIGHT)
- N** = PIN-FIN HEAT SINK (ANODIZED, BLACK) AND CLIP (H=13.5mm; TALL)
- Y** = PIN-FIN HEAT SINK (NICKEL PLATED) AND CLIP (H=6.5mm; SAN HEIGHT)
- D** = PIN-FIN HEAT SINK (NICKEL PLATED) AND CLIP (H=4.2mm; PCI HEIGHT)
- P** = PIN-FIN HEAT SINK (NICKEL PLATED) AND CLIP (H=13.5mm; TALL)
- Y** = EXTRUDED CUSTOM HEAT SINK FOR FRONT TO BACK AIR FLOW (NICKEL PLATED,) AND CLIP (H=6.94mm)
- W** = EXTRUDED CUSTOM HEAT SINK FOR FRONT TO BACK AIR FLOW (NICKEL PLATED,) AND CLIP (H=8.72mm)

NOTE: FOR DIMENSION "H" SEE SHEET 2

PACKAGING

- 1** = TRAY PACKAGING W/ HEAT SINK IN SEPARATE TRAY
- A** = TRAY PACKAGING W/ HEAT SINK ASSEMBLED
- T** = TAPE AND REEL PACKAGING W/ HEAT SINK IN SEPARATE TRAY

LIGHT PIPE OPTION

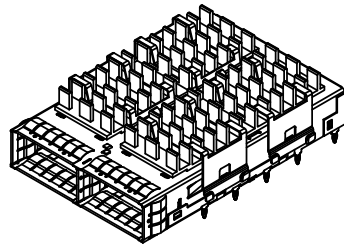
- 0** = WITHOUT LIGHT PIPE
- 1** = WITH ROUND LIGHT PIPE INSTALLED
- 3** = WITH SQUARE LIGHT PIPE INSTALLED
- 7** = WITH SINGLE BARREL LIGHT PIPE INSTALLED
- E** = WITH QUAD BARREL LIGHT PIPE INSTALLED

OPTIONAL DUST COVER

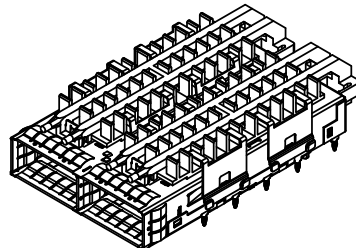
- 0** = WITHOUT DUST COVER
- D** = WITH DUST COVER SHIPPED AS LOOSE PIECE

REVISIONS

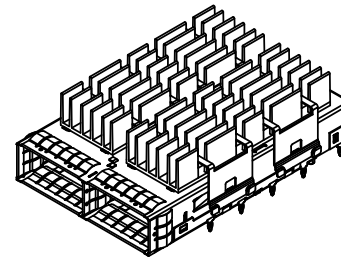
REV	ECN	DESCRIPTION	DATE	APPROVED
F		ADD MODEL W/ EXTRUDED HEAT SINK AND SINGLE LP	SEP 04/12	ZLJ
G		ADD PIN STYLE HEAT SINK AND NO LIGHT PIPE MODEL	SEP 05/12	ZLJ
H		ADD QUAD LIGHT PIPE OPTION	MAR17/14	JS



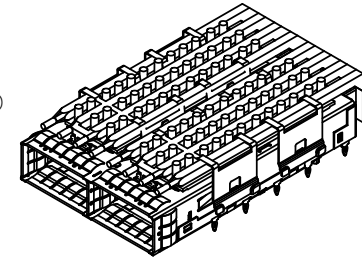
VIEW WITH PIN-FIN STYLE HEAT SINK AND CLIP ASSEMBLED
(P/N U90-A2D1-100A)



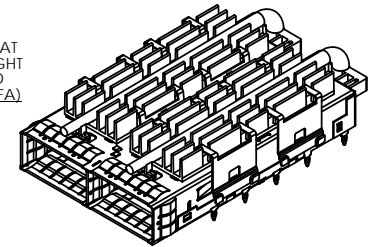
VIEW WITH PIN-FIN STYLE HEAT SINK, CLIP AND LIGHT PIPE ASSEMBLED
(P/N U90-A2D1-101A)



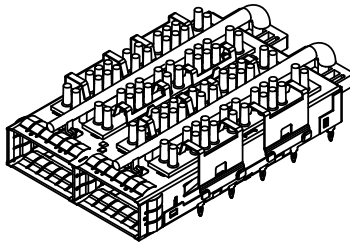
VIEW WITH EXTRUDED HEAT SINK, CLIP ASSEMBLED
(P/N U90-A2W1-100A)



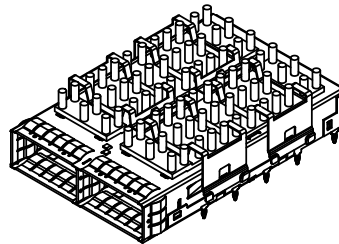
VIEW WITH PIN HEAT SINK, CLIP AND LIGHT PIPE ASSEMBLED
(P/N U90-A251-10FA)



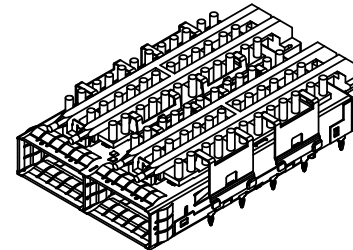
VIEW WITH EXTRUDED HEAT SINK, CLIP AND LIGHT PIPE ASSEMBLED
(P/N U90-A2Y1-107A)



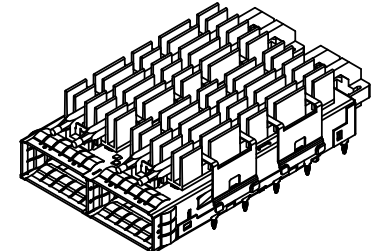
VIEW WITH PIN STYLE HEAT SINK AND CLIP ASSEMBLED AND DUST COVER (SHIPPED LOOSE)
(P/N U90-A251-1D7A)



VIEW WITH PIN STYLE HEAT SINK AND CLIP ASSEMBLED
(P/N U90-A251-100A)

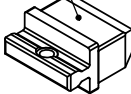


VIEW WITH PIN STYLE HEAT SINK, CLIP AND LIGHT PIPE ASSEMBLED
(P/N U90-A251-101A)



VIEW WITH EXTRUDED HEAT SINK, CLIP AND LIGHT PIPE ASSEMBLED
(P/N U90-A2W1-101A)

DUST COVER (SHIPPED LOOSE)
P/N U90-1401-8000



DO NOT SCALE DRAWING

THIS DOCUMENT CONTAINS PROPRIETARY INFORMATION AND SUCH INFORMATION MAY NOT BE DISCLOSED TO OTHERS FOR ANY PURPOSE OR USED FOR MANUFACTURING PURPOSES WITHOUT PERMISSION FROM AMPHENOL CANADA CORP.

UNLESS OTHERWISE SPECIFIED DIMENSIONS ARE IN MILLIMETERS TOLERANCES ARE:		APPROVALS		DATE		Amphenol High Speed Interconnects A Division of Amphenol Corp. www.amphenolhighspeed.com			
DECIMALS X.X ± 0.15 X.XX ± 0.10		ANGLES ± 0.5°		DRAWN C. MICHLIK		MAR07/12		TITLE	
MATERIAL AND FINISH		DESIGNED ZLJ		MAR07/12		CHECKED ZLJ		MAR07/12	
SEE NOTE 1		QA APPD						QSF 1x2 CAGE ASSEMBLY WITH OPTIONAL LIGHT PIPE	
REF.		E APPD						SIZE A3	
CODE IDENT. NO. 03554		DWG APPD		ZLJ		MAR07/12		DWG. NO. P-U90-A2X1-1XXX	
								SCALE 3:2	
								PROJECT	
								SHEET 1 OF 9	

