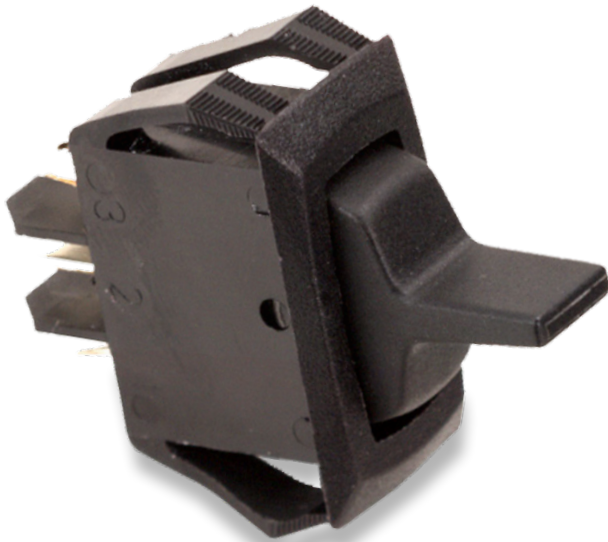


# R/RSC-Series

Single Pole Lighted Rocker & Paddle Switches

**PRODUCT WEBPAGE**

*request sample, configure part*



Since its introduction, the Corvette switch has become the barometer for versatility and performance in the switch market. Self cleaning contacts, international approvals, along with a wide variety of circuits, ratings, and actuator options make the Corvette the switch of choice for many markets.

**1**  
Pole

**10-20**  
Amps

**125-250**  
VAC

**6-24**  
VDC

## Typical Applications

- Office Lighting
- Appliance
- HVAC
- On-Highway
- Commercial Food
- Lawn & Garden
- Medical Equipment

# Tech Specs

## Dielectric Strength

UL/CSA: 1000V - live to dead metal parts  
 VDE: 4000V - live to dead metal parts;  
 750V - across open contacts

## Electrical Life

100,000 cycles

## Operating Temperature

32°F to 185°F (0°C to 85°C)

# Ordering Scheme

Sample Part Number **RA901 - V B - B - 9 - V**

Selection 1 2 3 4 5 6

### 1. SERIES

**10A 250 VAC; 16A 125 VAC; 3/4 HP 125-250 VAC; 10(4) A 250 VACu T85**

|                            |              |              |              |
|----------------------------|--------------|--------------|--------------|
|                            | Solder Lugs  | .250 Tabs    | Wire Leads   |
| OFF-NONE-ON                | <b>RA900</b> | <b>RA901</b> | <b>RA905</b> |
| ON-NONE-ON                 | <b>RB900</b> | <b>RB901</b> | <b>RB905</b> |
| ON-OFF-ON <sup>3</sup>     | <b>RC910</b> | <b>RC911</b> | <b>RC915</b> |
| OFF-NONE-(ON) <sup>2</sup> | <b>RD220</b> | <b>RD221</b> | <b>RD225</b> |

**15A 250 VAC; 20A 125 VAC; 3/4 HP 125-250 VAC**

|             |                |                |
|-------------|----------------|----------------|
|             | Solder Lugs    | .250 Tabs      |
| OFF-NONE-ON | <b>RSCA200</b> | <b>RSCA201</b> |
| ON-NONE-ON  | <b>RSCB200</b> | <b>RSCB201</b> |

### 2. ACTUATOR STYLE

|                           |                                |
|---------------------------|--------------------------------|
| <b>M</b> Momentary Rocker | <b>R</b> Rocker                |
| <b>P</b> Paddle           | <b>V</b> Visi-rocker (2 color) |

### 3. ACTUATOR COLOR

|                        |                        |
|------------------------|------------------------|
| <b>1</b> Black (gloss) | <b>B</b> Black (matte) |
| <b>2</b> White (gloss) | <b>W</b> White (matte) |

### 4. BEZEL COLOR

|                        |   |                        |   |
|------------------------|---|------------------------|---|
| <b>STANDARD</b>        |  | <b>OVAL</b>            |  |
| <b>B</b> Black (matte) |   | <b>1</b> Black (gloss) |   |
| <b>W</b> White (matte) |   | <b>2</b> White (gloss) |   |

### 5. ROCKER LEGEND

|                   |           |           |
|-------------------|-----------|-----------|
|                   | molded in | hot stamp |
| NO LEGEND         | <b>0</b>  | <b>0</b>  |
| Off-On vertical   | <b>1</b>  | <b>A</b>  |
| Off-On horizontal | <b>2</b>  | <b>B</b>  |
| O-I horizontal    | <b>8</b>  | <b>D</b>  |
| O-I vertical      | <b>9</b>  | <b>E</b>  |
| dual OFF-ON/O-I   | n/a       | <b>H</b>  |

### 6. VISI-ROCKER END / LEGEND COLOR

|                |                   |
|----------------|-------------------|
| <b>N</b> N/A   | <b>V</b> Visi-red |
| <b>B</b> Black | <b>W</b> White    |

Notes: PC Terminals also available, consult factory for details.

1 For additional ratings, consult factory.

2 Rating is 8A 250 VAC, 12A 125 VAC, 1/2 HP 125-250 VAC, and must specify M actuator style.

3 Not rated at 3/4 HP 125-250 VAC

( ) indicates momentary function.

[Configure Complete Part Number >](#)

[Browse Standard Parts >](#)

# Dimensional Specs

inches [millimeters]

