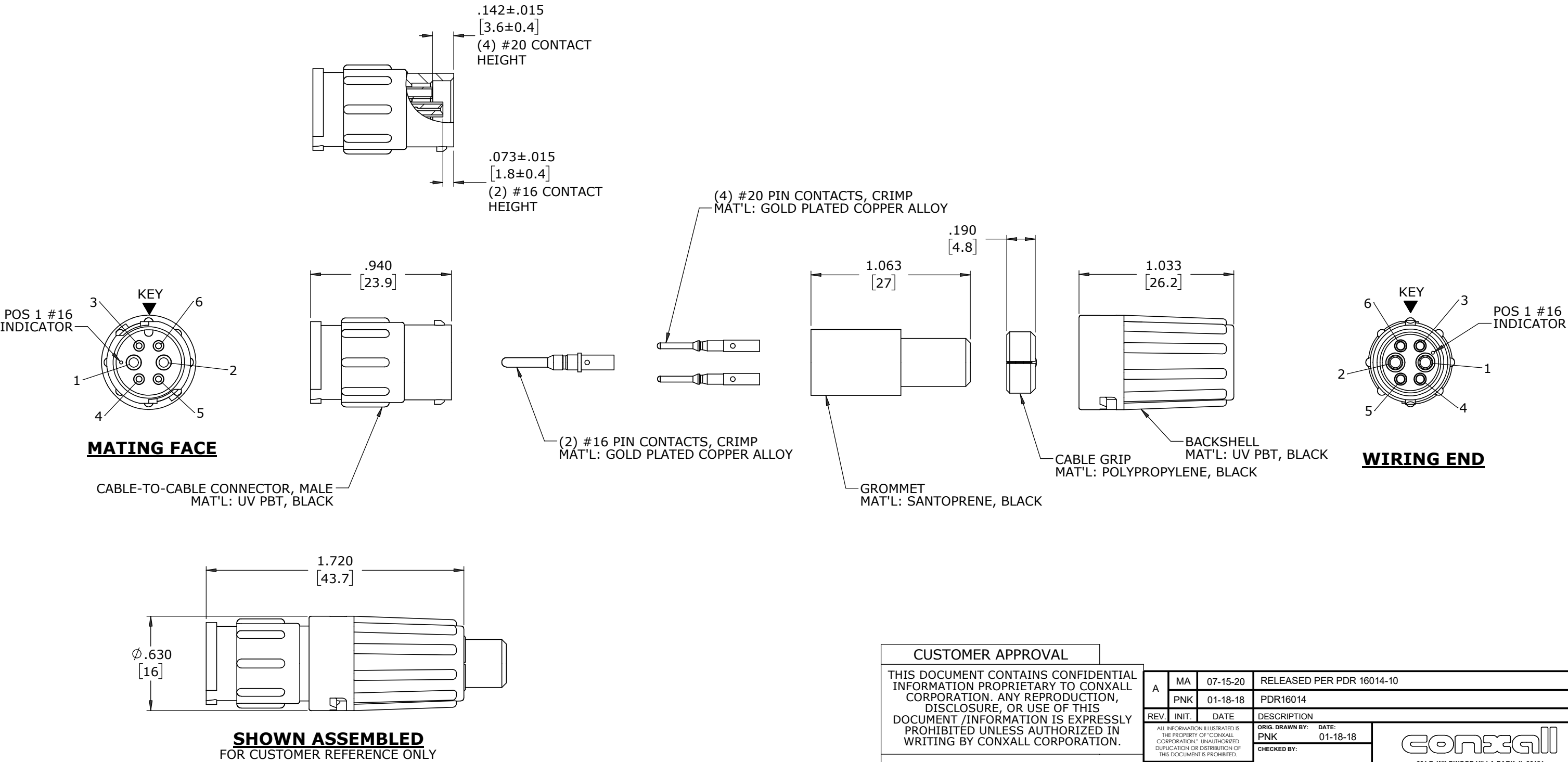


- NOTES:
- 1. ALL PARTS TO BE BULK PACKED
 - 2. CONTACTS ARE SHIPPED UNASSEMBLED
 - 3. ALL DIMENSIONS ARE REFERENCE EXCEPT THOSE WITH A TOLERANCE

ASSEMBLY P/N	CONTACT QTY.		CABLE O.D. RANGE
	#16	#20	
W8C80-6PG-P-513	2	4	.13-.15 [3.3-3.8]
W8C80-6PG-P-516			.16-.18 [4.1-4.6]
W8C80-6PG-P-519			.19-.21 [4.8-5.3]
W8C80-6PG-P-522			.22-.25 [5.6-6.]
W8C80-6PG-P-526			.25-.27 [6.4-6.9]
W8C80-6PG-P-528			.26-.285 [6.6-7.2]



CUSTOMER APPROVAL			
THIS DOCUMENT CONTAINS CONFIDENTIAL INFORMATION PROPRIETARY TO CONXALL CORPORATION. ANY REPRODUCTION, DISCLOSURE, OR USE OF THIS DOCUMENT /INFORMATION IS EXPRESSLY PROHIBITED UNLESS AUTHORIZED IN WRITING BY CONXALL CORPORATION.			
APPROVED BY: _____		DATE: _____	

A	MA	07-15-20	RELEASED PER PDR 16014-10	
	PNK	01-18-18	PDR16014	
REV.	INIT.	DATE	DESCRIPTION	
	PNK	01-18-18	ORIG. DRAWN BY: DATE: 01-18-18	 601 E. WILDWOOD VILLA PARK, IL 60181
ALL INFORMATION ILLUSTRATED IS THE PROPERTY OF "CONXALL CORPORATION". UNAUTHORIZED DUPLICATION OR DISTRIBUTION OF THIS DOCUMENT IS PROHIBITED.			CHECKED BY:	
ALL UNITS ARE IN FEET, INCHES, FRACTION OF INCHES AND DECIMALS.			APPROVED BY:	TITLE: CABLE-TO-CABLE ASSEMBLY 2-16 + 4-20 PIN CONTACTS, CRIMP INSTA-CLICK™ MINI-CON-X POWER/SIGNAL CUSTOMER: STANDARD PRODUCT
UNLESS OTHERWISE SPECIFIED TOLERANCES: 3 PLACE DECIMALS ±.010 ANGLES ±1° FRACTIONS ±1/16 = CRITICAL CHARACTERISTIC FLAG PER SPEC. XXXX			SCALE NTS SIZE B SHEET 1 OF 1	
FILE: W8C80-6PG-P-5XX			DIRECTORY: SLW	PART NUMBER: W8C80-6PG-P-5XX
REV A			REV A	

RoHS COMPLIANT