





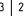


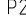


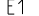
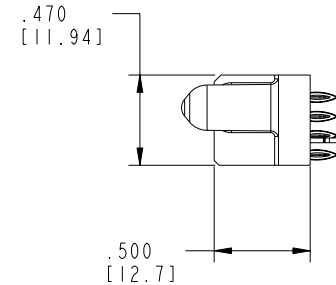
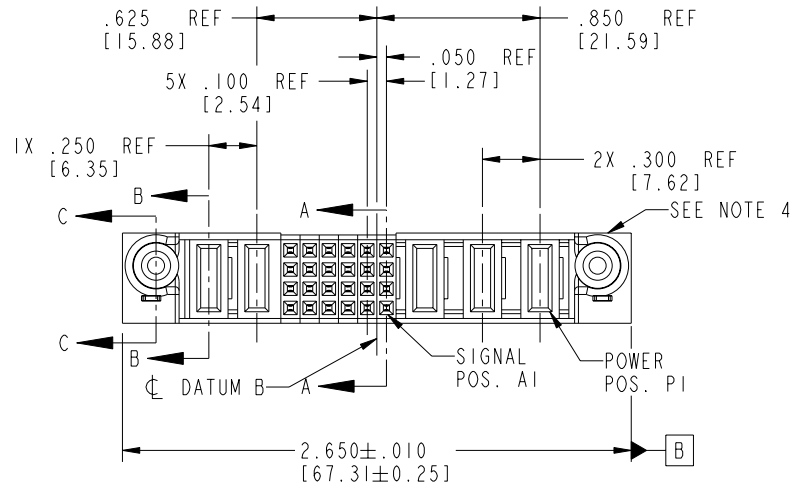


Tous droits strictement réservés. Reproduction ou communication a des tiers interdite sous quelque forme que ce soit sans autorisation écrite du propriétaire. Propriété de c FCI. Droits de reproduction FCI.

FCI

All rights strictly reserved. Reproduction or issue to third parties in any form whatever is not permitted without written authority from the proprietor. Property of FCI. Copyright FCI.

PRODUCT NO.	ROWS		POWER			SIGNAL						POWER			
		E2	P5	P4	6	5	4	3	2	1	P3	P2	P1	E1	
51940-164__ NOTE: 3	D C B A														



CODE	DIM "M" MATING LENGTH		CONTACT TYPE
HA	N/A	[N/A]	HOLD-DOWN
PF	.092	[2.34]	POWER
F	N/A	[N/A]	SIGNAL
PC	.042	[1.07]	POWER

mat'l code				SEE NOTE 2		tolerances unless otherwise specified		CUSTOMER		<div><div>A</div><div>FCI</div><div>www.fciconnect.com</div></div>	
ltr	ecn no.	dr	date					COPY			
A	DG05-0314	GuoJM	09/05/05	linear		.XX±.01/0.X±0.3		projection	title		
						.XXX±.005/0.XX±0.13			3ACP + 24S + 2P		
				angles		.XXX±.0020/0.XXX±0.051			VERTICAL PF RECEPT		
						0°±2°		INCH/MM	product family		code
				dr	JM Guo	09/05/05			PwrBlade		
				enrg	LUOS	09/05/05		←	size	dwg no	213
				chr	VICTOR LIN	09/05/05		→	A	51940-164	sheet
				appd	JOSEPH HSIA	09/05/05		scale			1:1
sheet index	revision sheet	A 1	A 2	A 3	A 4						

cage code 22526

Pro/E

3

4

PDM: Rev:A

STATUS: Released

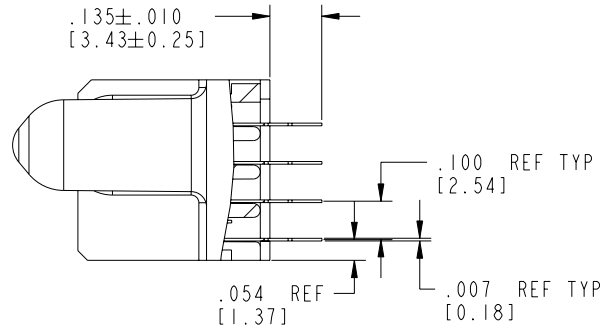
Printed: Sep 22, 2006

Tous droits strictement reserves. Reproduction ou communication a des tiers interdite sous quelque forme que ce soit sans autorisation écrite du propriétaire. Propriété de c FCI. Droits de reproduction FCI.

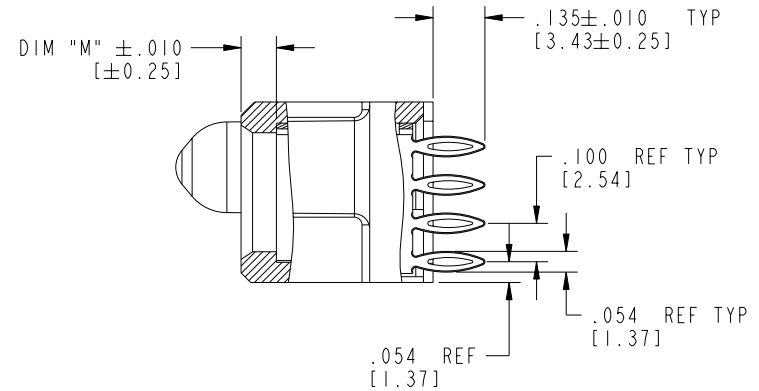
All rights strictly reserved. Reproduction or issue to third parties in any form whatever is not permitted without written authority from the proprietor. Property of FCI. Copyright FCI.

A
FCI

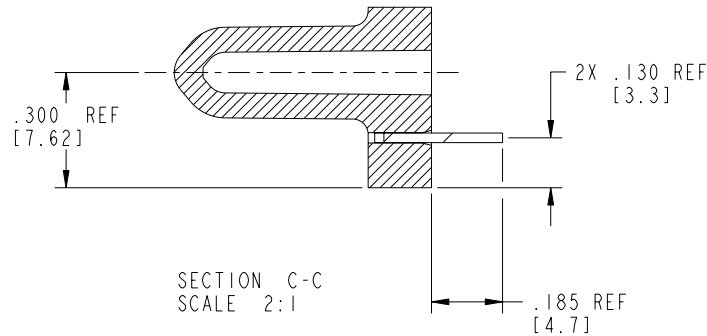
PRODUCT NUMBER
51940-164__
NOTE: 3




SECTION A-A
SCALE 2:1



SECTION B-B
SCALE 2:1



SECTION C-C
SCALE 2:1

mat'l code				tolerances unless otherwise specified		CUSTOMER		 www.fciconnect.com	
ltr	ecn no.	dr	date	linear	angular	COPY	projection		
A				.XX±.01/0.X±0.3				title	3ACP + 24S + 2P VERTICAL PF RECEPT
				.XXX±.005/0.XXX±0.13				product family	PwrBlade
				.XXXX±.0020/0.XXX±0.051				size	213
				0°±2°				dwg no	51940-164
				dr JM Guo 09/05/05				sheet	2 of 4
				enr LUOS 09/05/05					
				chr VICTOR LIN 09/05/05					
				appd JOSEPH HSIA 09/05/05					
sheet index	revision sheet								

Pro/E

cage code 22526

PDM: Rev:A

STATUS: Released

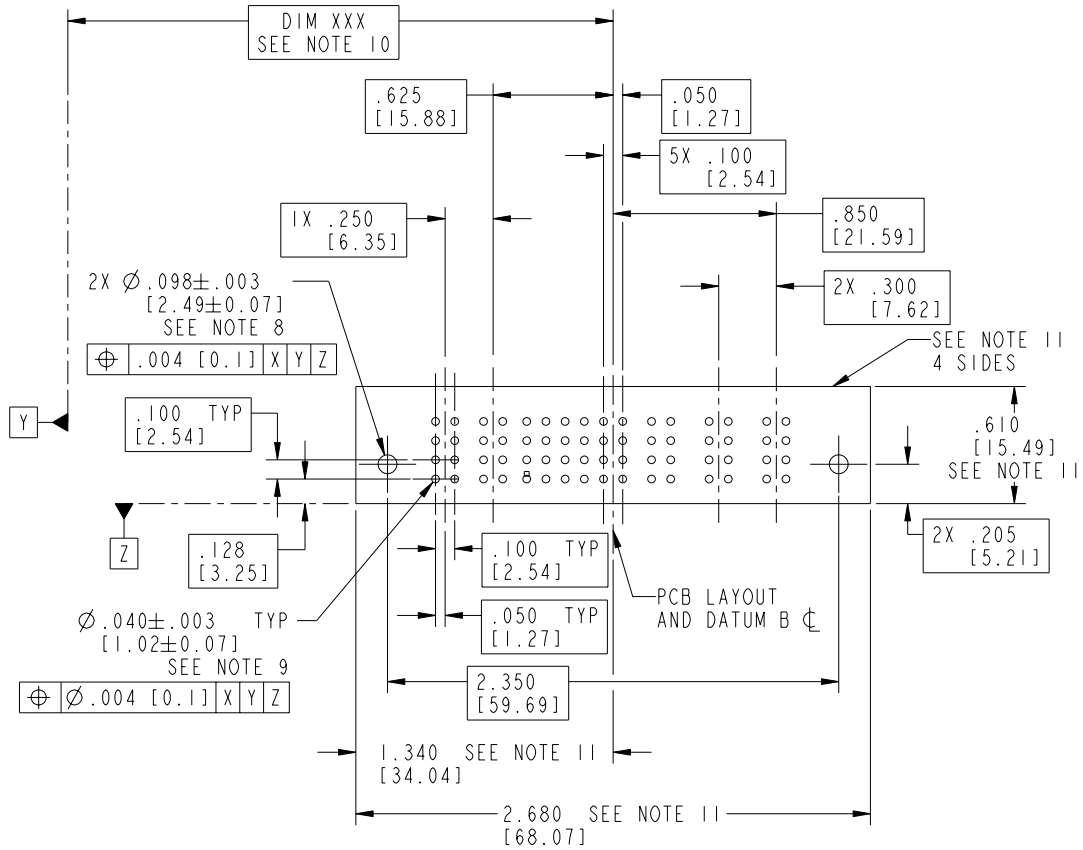
Printed: Sep 22, 2006

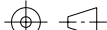
Tous droits strictement réservés. Reproduction ou communication a des tiers interdite sous quelque forme que ce soit sans autorisation écrite du propriétaire. Propriété de c FCI. Droits de reproduction FCI.

A
FCI

All rights strictly reserved. Reproduction or issue to third parties in any form whatever is not permitted without written authority from the proprietor. Property of FCI. Copyright FCI.

PRODUCT NUMBER
51940-164__
NOTE: 3



mat'l code				SEE NOTE 2		tolerances unless otherwise specified		CUSTOMER		<div><div>A</div><div>FCI</div><div>www.fciconnect.com</div></div>	
ltr	ecn no.	dr	date	linear	.XX±.01/0.X±0.3		COPY			title	
A					.XXX±.005/0.XX±0.13		projection			3ACP + 24S + 2P	
					.XXX±.0020/0.XXX±0.051		INCH/MM			VERTICAL PF RECEPT	
				angles	0°±2°		scale		1:1		product family
				dr	JM Gvo	09/05/05	size		PwrBlade		code
				enrg	LUOS	09/05/05	dwg no		213		sheet
				chr	VICTOR LIN	09/05/05	A		51940-164		3 of 4
				appd	JOSEPH HSIA	09/05/05					
sheet index		revision sheet									

Pro/E

cage code 22526

PDM: Rev:A

STATUS: Released

Printed: Sep 22, 2006

PRODUCT NUMBER
51940-164__
NOTE: 3

NOTES:

1. DIMENSIONS AND TOLERANCES ARE IN ACCORDANCE WITH
ASME Y14.5M, 1994 UNLESS OTHERWISE SPECIFIED.

CONNECTOR NOTES:

- (2) HOUSING MATERIAL: UL 94 V-0 GLASS FILLED
HIGH-TEMP THERMOPLASTIC
POWER CONTACT MATERIAL: COPPER ALLOY
SIGNAL PIN MATERIAL: COPPER ALLOY

3. PLATING:

51940-164 Singal Pin:30u"/0.76um Au OVER 50u"/1.27um Ni ON THE CONTACT AREA,
AND 100u"/2.54um SnPb PLATING OVER 50u"/1.27um Ni ON THE TERMINATION SECTION.
Power Pin:30u"/0.76um Au OVER 50u"/1.27um Ni ON THE CONTACT AREA,
AND 100u"/2.54um SnPb PLATING OVER 50u"/1.27um Ni ON THE TERMINATION SECTION.

51940-164LF Singal Pin:30u"/0.76um Au OVER 50u"/1.27um Ni ON THE CONTACT AREA,
AND 78u"/2.00um Sn PLATING OVER 50u"/1.27um Ni ON THE TERMINATION SECTION.
Power Pin:30u"/0.76um Au OVER 50u"/1.27um Ni ON THE CONTACT AREA,
AND 78u"/2.00um Sn PLATING OVER 50u"/1.27um Ni ON THE TERMINATION SECTION.

PART NUMBER 51940-164LF MEETS EUROPEAN UNION DIRECTIVE AND JOTHER COUNTRY REGULATIONS AS DESCRIBED IN GS-22-008.

THE HOUSING WILL WITHSTAND EXPOSURE TO 260° PEAK TEMPERATURE FOR 10 SECONDS IN A WAVE SOLDER APPLICATION WITH A CIRCUIT BOARD.

- (4) MANUFACTURER'S NAME, P/N, AND DATE CODE TO APPEAR ON
THIS SURFACE.

5. PRODUCT SPECIFICATION GS-12-149.
APPLICATION SPECIFICATION BUS-20-067.

6. PACKAGED IN TRAYS.

PCB NOTES:


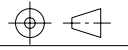
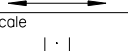
7. ALL HOLE DIAMETERS ARE FINISHED HOLE SIZE.

- (8) MOUNTING HOLES, WHERE APPLICABLE, ARE UNPLATED.

- (9) $\varnothing.0453 \pm .0010$ [1.151 \pm 0.025] DRILLED HOLES PLATED WITH
.0003 [0.008] MIN SnPb OVER .001 [0.03]
TO .003 [0.08] Cu PLATING TO ACHIEVE
 $\varnothing.040 \pm .003$ [1.02 \pm .07] HOLE.

- (10) "DIM XXX" TO BE DETERMINED BY THE CUSTOMER.

- (11) CONNECTOR KEEP-OUT ZONE.

mat'l code				SEE NOTE 2		tolerances unless otherwise specified		CUSTOMER		 www.fciconnect.com			
ltr	ecn no.	dr	date	linear	.XX \pm .01 / 0.X \pm 0.3		COPY						
A					.XXX \pm .005 / 0.XX \pm 0.13		projection						
					.XXX \pm .0020 / 0.XXX \pm 0.051		scale						
				angles	$0^\circ \pm 2^\circ$		INCH/MM						
				dr	JM Guo	09/05/05	product family					PwrBlade	code
				enrg	LUOS	09/05/05	size					dwg no	213
				chr	VICTOR LIN	09/05/05	A		51940-164	sheet			
				appd	JOSEPH HSIA	09/05/05	1:1		4 of 4				
sheet index		revision sheet											