



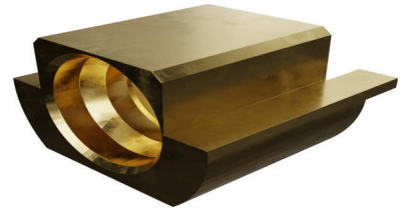
**Part Number :** [734153596](#)

**Product Description :** SMP Plug, Straight, Limited Detent, PCB, Edge Mount, 0.25µm Gold (Au) Plated, 1.27mm Leg Length, 1000 Pieces Tape and Reel, 50 Ohms

**Series Number :** 73300

**Status :** Active

**Product Category :** RF / Coaxial Connectors



---

## Documents and Resources

### Drawings

[734153596 sd.pdf](#)

### 3D Models and Design Files

[STEP AP242](#)

[SOLIDWORKS](#)

[Creo](#)


### Specifications

[PS-89675-332-001.pdf](#)

---

## Product Environment Compliance

### Compliance

GADSL/IMDS	Not Relevant
China RoHS	 per SJ/T 11365-2006
EU ELV	Not Relevant
Low-Halogen Status	Low-Halogen per IEC 61249-2-21
REACH SVHC	Contains Lead per D(2024)6225-DC (07 Nov 2024) SCIP:b1040209-a796-4cd4-9b9e-74001c5a313a
EU RoHS	Compliant with Exemption 6(c) per EU 2015/863

### [Compliance Statements](#)

- EU RoHS

- REACH SVHC
- Low-Halogen

#### Industry Documents

- IPC 1752A Class C
- IPC 1752A Class D
- Molex Product Compliance Declaration
- IEC-62474
- chemSHERPA (xml)

#### Substances of Interest

- PFAS

#### EU RoHS Certificate of Compliance

#### Additional Product Compliance Information

## Part Details

### General

Status	Active
Category	RF / Coaxial Connectors
Series	73300
Description	SMP Plug, Straight, Limited Detent, PCB, Edge Mount, 0.25µm Gold (Au) Plated, 1.27mm Leg Length, 1000 Pieces Tape and Reel, 50 Ohms
Application	RF
Product Name	SMP
Style	PCB
Type	Microminiature
UPC	887191226965

### Electrical

Frequency	40 GHz
Impedance	50Ω
Power / Voltage	VOLTAGE: 335 Vrms@Sea Level

### Physical

Cable Attachment	N/A
Gender	Plug

Keying to Mating Part	N/A
Net Weight	3.830/g
Orientation	Straight
Packaging Type	Embossed Tape on Reel
Panel Mount	No
Panel Mount Method	N/A
PCB Mounting	Edge Mount
PCB Thickness - Recommended	1.20mm
Reverse Polar	No
Wire/Cable Type	N/A

---

This document was generated on Apr 21, 2026