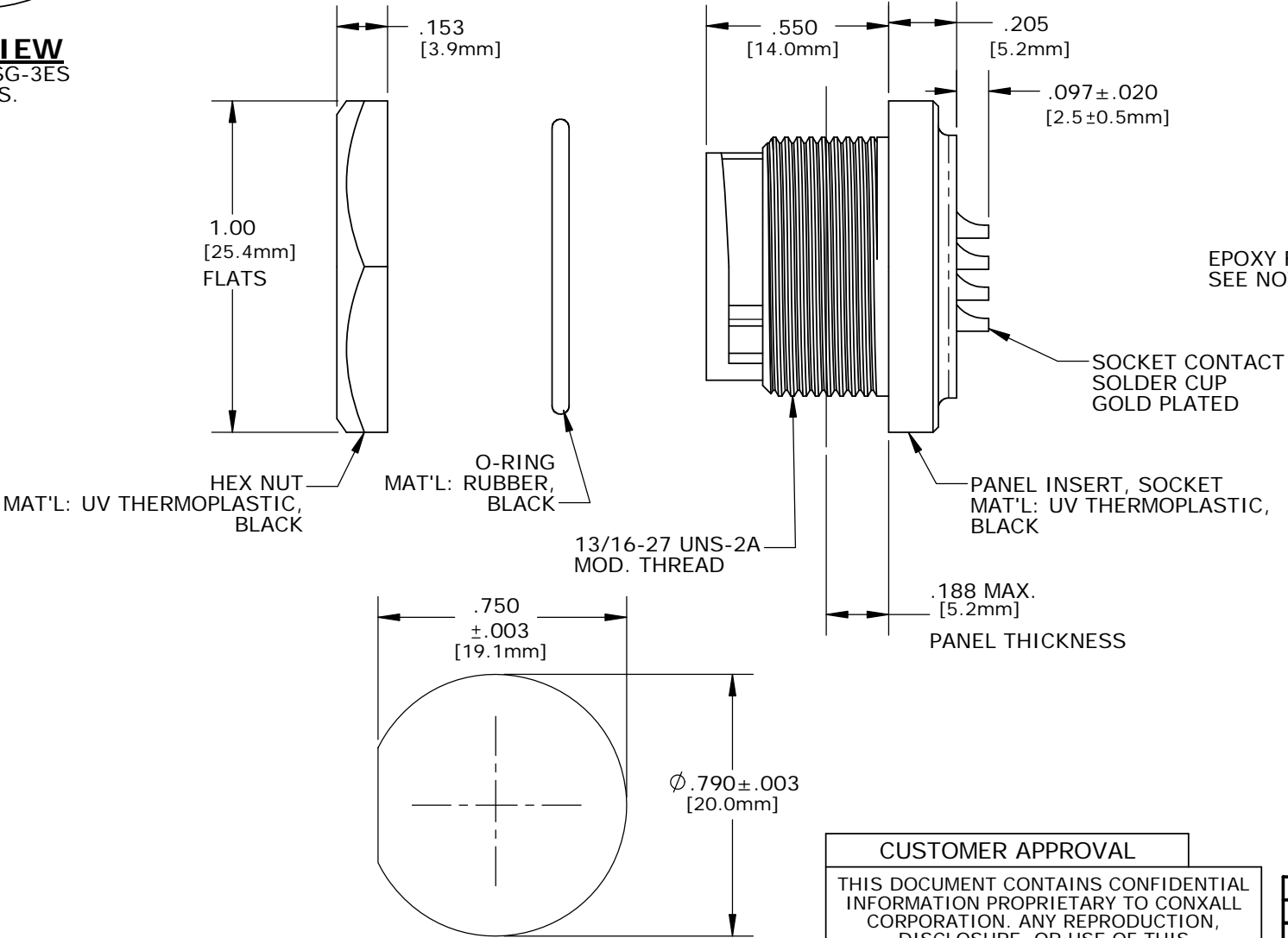
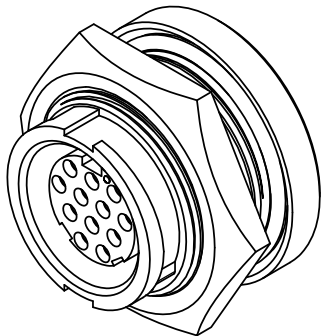
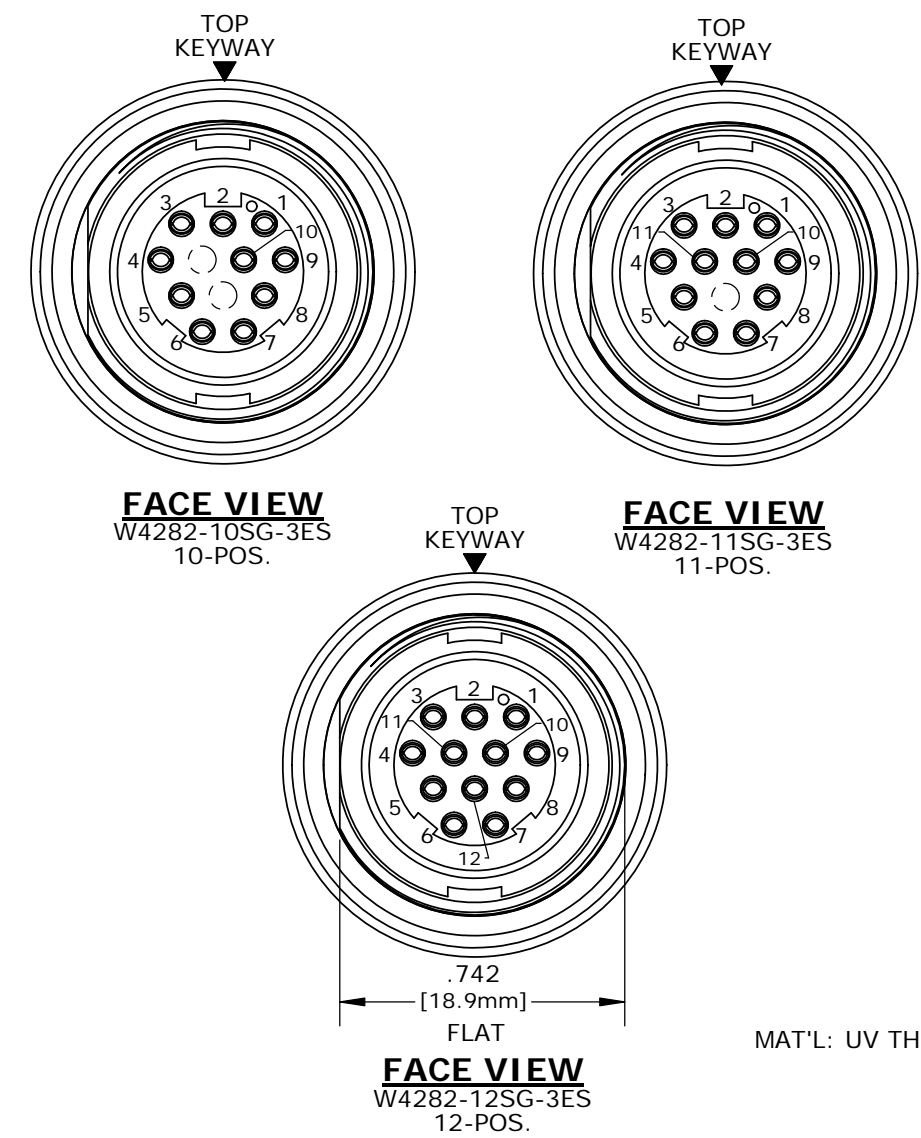


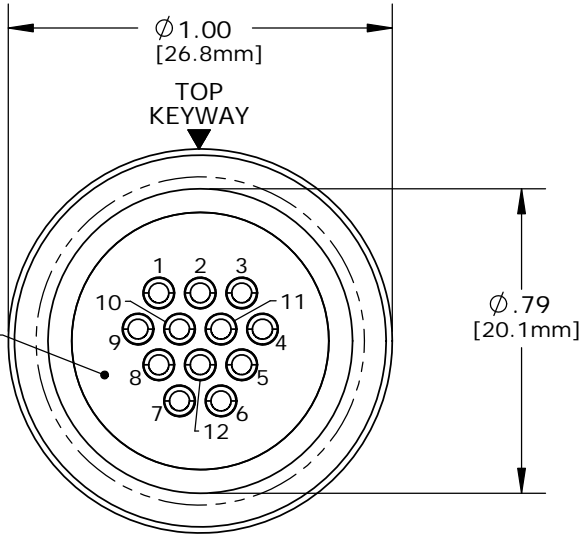
- NOTES:
1. ALL PARTS TO BE BULK PACKED.
  2. CONTACTS ASSEMBLED INTO CONNECTOR. SOLDER CUPS FACING TOP KEYWAY.
  3. BACK WELL FILLED WITH EPOXY.
  4. ALL DIMENSIONS ARE REFERENCE ONLY EXCEPT WHERE NOTED WITH A TOLERANCE. DIMENSIONS IN BRACKETS [ ] ARE METRIC.



RECOMMENDED  
PANEL CUTOUT  
STANDARD MULTI-CON-X


ASS'Y P/N	CONTACTS	HOLE POS. CLOSED
W4282-10SG-3ES	10 - #20	11, 12
W4282-11SG-3ES	11 - #20	12
W4282-12SG-3ES	12 - #20	NONE
W4282-1XSG-3ES		

NO. OF CONTACTS



PC TAIL VIEW  
W4282-10SG-3ES - 10-POS. (11&12 CLOSED)  
W4282-11SG-3ES - 11-POS. (12 CLOSED)  
W4282-12SG-3ES - 12-POS. (ALL OPEN)

CUSTOMER APPROVAL	
THIS DOCUMENT CONTAINS CONFIDENTIAL INFORMATION PROPRIETARY TO CONXALL CORPORATION. ANY REPRODUCTION, DISCLOSURE, OR USE OF THIS DOCUMENT /INFORMATION IS EXPRESSLY PROHIBITED UNLESS AUTHORIZED IN WRITING BY CONXALL CORPORATION.	
APPROVED BY:	_____
DATE:	_____

A	PAK	09/12/19	DRAWING CREATED AND RELEASED PER DOR 10-2523JS-1		
REV.	INIT.	DATE	DESCRIPTION		
	PAK	10/07/14	ORIG. DRAWN BY: DATE: 10/07/14	 601 E. WILDWOOD VILLA PARK, IL 60181	
			CHECKED BY:		
ALL INFORMATION ILLUSTRATED IS THE PROPERTY OF "CONXALL CORPORATION". UNAUTHORIZED DUPLICATION OR DISTRIBUTION OF THIS DOCUMENT IS PROHIBITED.			APPROVED BY:	TITLE: PANEL SOCKET, W/ EPOXY #20 SOLDER, 12-POS. MULTI-CON-X, E-KEY, WEATHER RESISTANT STANDARD PRODUCT	
ALL UNITS ARE IN FEET, INCHES, FRACTION OF INCHES AND DECIMALS.			SCALE: NTS	SIZE: B	SHEET: 1 OF 1
UNLESS OTHERWISE SPECIFIED TOLERANCES: 3 PLACE DECIMALS ±.005 ANGLES ±1° FRACTIONS ±1/16			FILE: W4282-1XSG-3ES	DIRECTORY: SLW	PART NUMBER: W4282-1XSG-3ES
▷ = CRITICAL CHARACTERISTIC FLAG PER SPEC. XXXX					REV A