

# DDS Series

## Micro Mini Thru-hole Detect Switches



### Features/Benefits

- Vertical or horizontal actuation
- 2mm overtravel—Ideal for detector applications
- Low actuations force (less than 40 grams)
- RoHS compliant and compatible

### Typical Applications

- Detect the presence of a mechanical device
- Medical devices
- Consumer electronic devices

### Specifications

CONTACT RATING: 0.1A @ 30 VDC.  
MECHANICAL & ELECTRICAL LIFE: 50,000 cycles.  
CONTACT RESISTANCE: 150 m  $\Omega$  max. initial.  
INSULATION RESISTANCE: 100 M  $\Omega$  min. @ 100 VDC.  
OPERATING TEMPERATURE: -20°C to +70°C.  
DIELECTRIC STRENGTH: 100 volts AC @ 60 Hz.  
PACKAGING: Bulk.

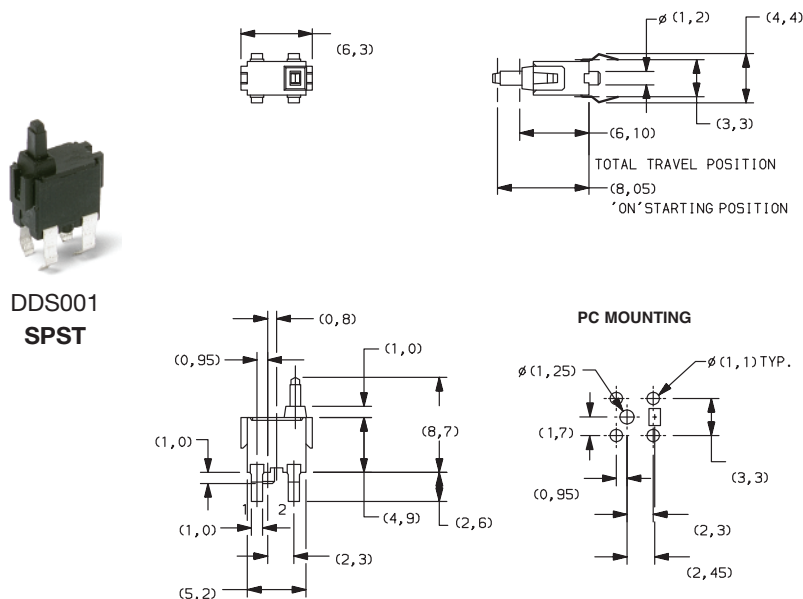
### Materials

HOUSING: P.P.S.  
ACTUATOR: PA66  
MOVABLE CONTACT: Tin bronze, silver plated.

**NOTE:** Specifications and materials listed above are for switches with standard options.  
For information on specific and custom switches, consult Customer Service Center.

### How To Order

Complete part numbers for DDS Series Switches are shown below.

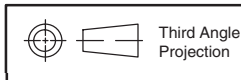


DDS001  
SPST

PART NUMBER	DESCRIPTION	SCHEMATIC
DDS001	Vertical Actuator	 SPST N.O.



Detect

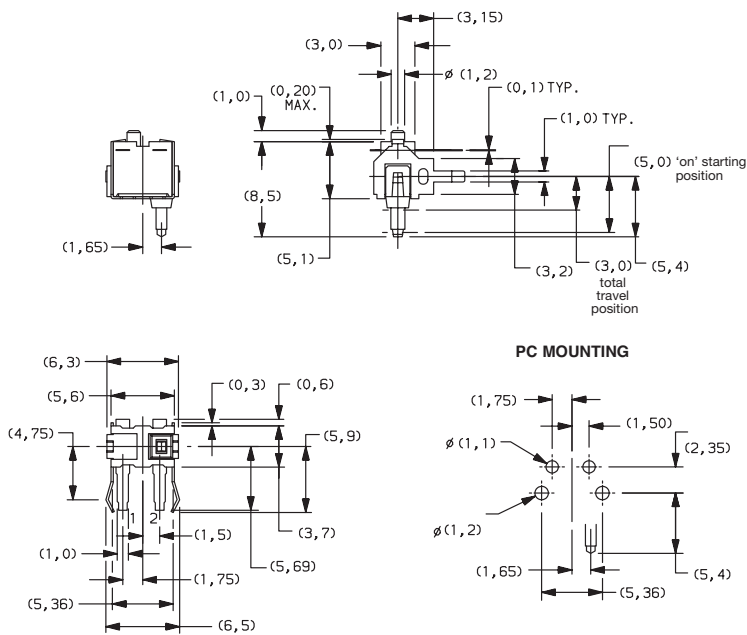


Dimensions are shown: mm  
Specifications and dimensions subject to change

# DDS Series

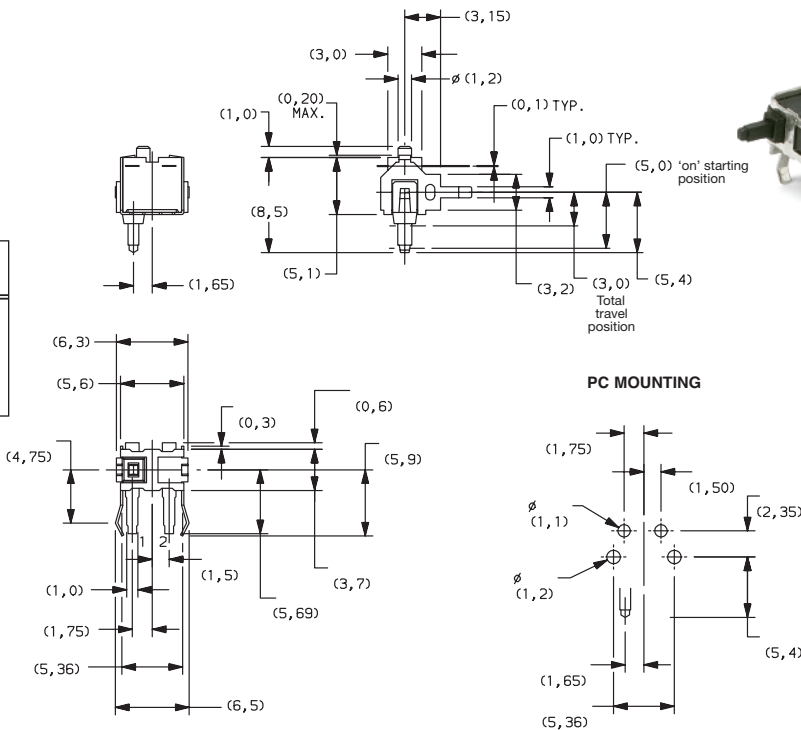
## Micro Mini Thru-hole Detect Switches

PART NUMBER	DESCRIPTION	SCHEMATIC
DDS002	Right angle, actuator right	 SPST N.O.



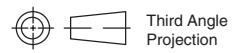
DDS002  
SPST

PART NUMBER	DESCRIPTION	SCHEMATIC
DDS003	Right angle, actuator left	 SPST N.O.



E

Detect



Third Angle  
Projection

Dimensions are shown: mm  
Specifications and dimensions subject to change

[www.ck-components.com](http://www.ck-components.com)