



Inter-
face

Number of contacts

8

+ 2x GND



Features

- Miniaturised Ethernet data interface suitable for industry in acc. to IEC 61076-3-124 type A
- Robust industrial design
- 360° shielding
- Category of transmission Cat. 6_A
- 5000 mating cycles
- 70 % reduced size compared to RJ45
- Suitable for all PoE versions

Technical characteristics

Number of contacts	8
Additional contacts	+ 2x GND
Rated current	1.5 A
Rated voltage	50 V AC, 60 V DC
Test voltage U _{r.m.s.}	0.5 kV
Contact resistance	≤30 mΩ
Shielding resistance	≤100 mΩ
Limiting temperature	-40 ... +85 °C
Storage temperature	-30 ... +60 °C
Mating cycles	≥5000
Degree of protection acc. to IEC 60529	IP20
Transmission characteristics	Cat. 6 _A , Class E _A up to 500 MHz
Data rate	10 Mbit/s, 100 Mbit/s, 1 Gbit/s, 2.5 Gbit/s, 5 Gbit/s, 10 Gbit/s
Insertion force	≤25 N
Withdrawal force	≤25 N
Material (insert)	LCP
Colour (insert)	Black
Material (contacts)	Copper alloy
Flammability acc. to UL 94	V-0
RoHS	compliant

Specifications and approvals

IEC 61076-3-124



Details

Cable assemblies see chapter 8

[illegible]

Inter-
face

Number of contacts

8

+ 2x GND



Features

- Miniaturised Ethernet data interface suitable for industry in acc. to IEC 61076-3-124 type A
- Robust industrial design
- 360° shielding
- Category of transmission Cat. 6_A
- 5000 mating cycles
- Suitable for all PoE versions

Technical characteristics

Number of contacts	8
Additional contacts	+ 2x GND
Rated current	1.5 A
Rated voltage	50 V AC, 60 V DC
Test voltage U _{r.m.s.}	0.5 kV
Contact resistance	≤30 mΩ
Shielding resistance	≤100 mΩ
Limiting temperature	-40 ... +85 °C
Storage temperature	-30 ... +60 °C
Mating cycles	≥5000
Degree of protection acc. to IEC 60529	IP20
Cable diameter	6.3 ... 7.2 mm
Transmission characteristics	Cat. 6 _A , Class E _A up to 500 MHz
Data rate	10 Mbit/s, 100 Mbit/s, 1 Gbit/s, 2.5 Gbit/s, 5 Gbit/s, 10 Gbit/s
Insertion force	≤25 N
Withdrawal force	≤25 N
Material (insert)	LCP
Colour (insert)	Black
Material (contacts)	Copper alloy
Flammability acc. to UL 94	V-0

Specifications and approvals

IEC 61076-3-124



Details

Cable assemblies see chapter 8

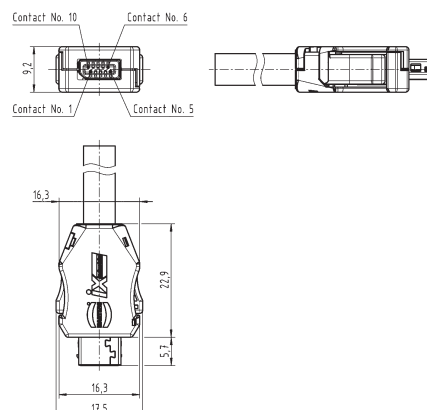
Identification

HARTING ix Industrial®,
Cable connector,
Solder termination,
Fully shielded, 360° shielding contact,
for AWG 28/7 - 22/7 and conductor diameters up to 1.55 mm,
Pack contents:
Packaging with 100 pieces
Contact surface:
Au over Ni

Part number

09 45 181 2560 XL

Drawing (dimensions in mm)



Identification	Part number	Drawing (dimensions in mm)
<p>HARTING ix Industrial®, Cable connector, IDC termination, Fully shielded, 360° shielding contact, for AWG 28/7 - 26/7 and conductor diameters from 0.95 - 1.05 mm, Pack contents: Packaging with 100 pieces Contact surface: Au over Ni</p>	09 45 181 2561 XL	
<p>Assembly tool, for HARTING ix Industrial® to assemble the single wire to the IDC and the cable strain relief crimping</p>	09 45 800 0181	

Inter-
face



Interface

Number of contacts

10



Features

- Miniaturised interface for signals and bus systems in acc. to IEC 61076-3-124 type B, suitable for industrial use
- Robust industrial design
- 360° shielding
- 5000 mating cycles
- Very small and space saving interface

Technical characteristics

Number of contacts	10
Rated current	1.5 A
Rated voltage	50 V AC, 60 V DC
Test voltage U _{r.m.s.}	0.5 kV
Contact resistance	≤30 mΩ
Shielding resistance	≤100 mΩ
Limiting temperature	-40 ... +85 °C
Storage temperature	-30 ... +60 °C
Mating cycles	≥5000
Degree of protection acc. to IEC 60529	IP20
Insertion force	≤25 N
Withdrawal force	≤25 N
Material (insert)	LCP
Colour (insert)	Black
Material (contacts)	Copper alloy
Flammability acc. to UL 94	V-0

Specifications and approvals

IEC 61076-3-124



Details

Cable assemblies see chapter 8

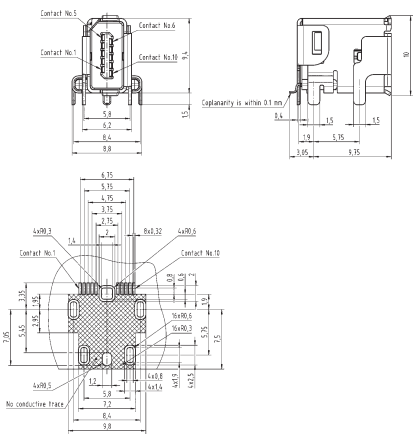
Identification

HARTING ix Industrial®,
PCB connector,
Solder termination,
Fully shielded, 360° shielding contact,
Pack contents:
1 sample piece
Contact surface:
Au over Ni

Part number

09 45 281 9000 333

Drawing
(dimensions in mm)





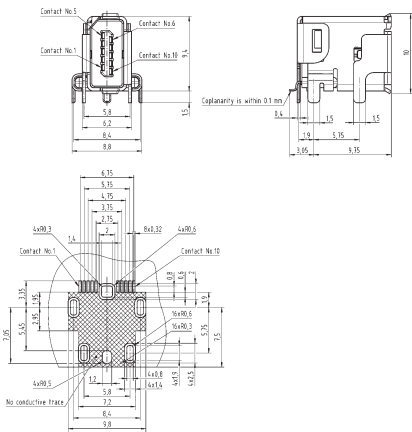
Identification

HARTING ix Industrial®,
PCB connector,
Solder termination,
Fully shielded, 360° shielding contact,
Pack contents:
400 pieces on reel
Contact surface:
Au over Ni

Part number

09 45 281 9000

Drawing
(dimensions in mm)



Inter-
face



Inter-
face

Number of contacts

10



Features

- Miniaturised interface for signals and bus systems in acc. to IEC 61076-3-124 type B, suitable for industrial use
- Robust industrial design
- 360° shielding
- 5000 mating cycles
- Very small and space saving interface

Technical characteristics

Number of contacts	10
Rated current	1.5 A
Rated voltage	50 V AC, 60 V DC
Test voltage U _{r.m.s.}	0.5 kV
Contact resistance	≤30 mΩ
Shielding resistance	≤100 mΩ
Limiting temperature	-40 ... +85 °C
Storage temperature	-30 ... +60 °C
Mating cycles	≥5000
Degree of protection acc. to IEC 60529	IP20
Cable diameter	6.3 ... 7.2 mm
Insertion force	≤25 N
Withdrawal force	≤25 N
Material (insert)	LCP
Colour (insert)	Black
Material (contacts)	Copper alloy
Flammability acc. to UL 94	V-0

Specifications and approvals



Details

Cable assemblies see chapter 8

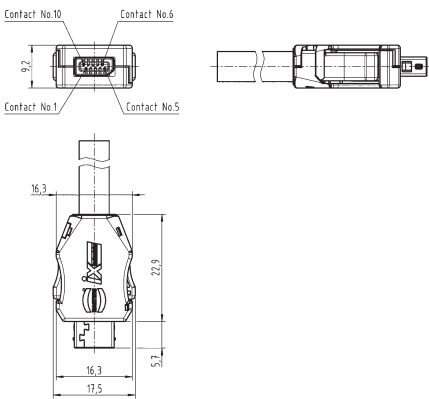
Identification

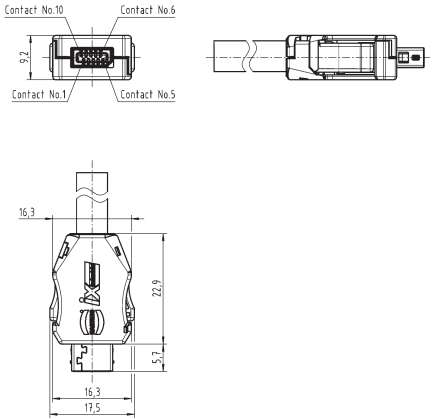
HARTING ix Industrial®,
Cable connector,
Solder termination,
Fully shielded, 360° shielding contact,
for AWG 28/7 - 22/7 and conductor diameters up to 1.55 mm,
Pack contents:
Packaging with 100 pieces
Contact surface:
Au over Ni

Part number

09 45 181 9000 XL

Drawing
(dimensions in mm)

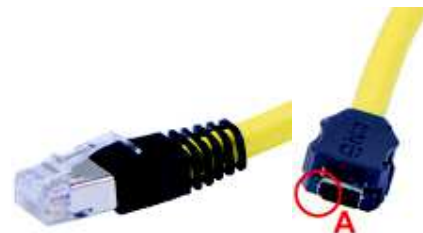


Identification	Part number	Drawing (dimensions in mm)
<p>HARTING ix Industrial®, Cable connector, IDC termination, Fully shielded, 360° shielding contact, for AWG 28/7 - 26/7 and conductor diameters from 0.95 - 1.05 mm, Pack contents: Packaging with 100 pieces Contact surface: Au over Ni</p>	09 45 181 9001 XL	
<p>Assembly tool, for HARTING ix Industrial® to assemble the single wire to the IDC and the cable strain relief crimping</p>	09 45 800 0181	

Inter-
face

4x 2x AWG 28/7
HARTING ix Industrial® Type A
RJ45

Cable



Features

- Miniaturised Ethernet data interface suitable for industry in acc. to IEC 61076-3-124 type A
- Robust industrial design
- 360° shielding
- Category of transmission Cat. 6_A
- 5000 mating cycles
- Flexible, space saving
- Suitable for all PoE versions

Technical characteristics

Number of cores	8
Core structure	4x 2x AWG 28/7
Connector 1	HARTING ix Industrial®, Type A
Connector 2	RJ45
Limiting temperature	-40 ... +80 °C
Transmission characteristics	Cat. 6 _A , Class E _A up to 500 MHz
Data rate	10 Mbit/s, 100 Mbit/s, 1 Gbit/s, 2.5 Gbit/s, 5 Gbit/s, 10 Gbit/s
Material (cable)	PVC
Colour (cable)	Yellow
RoHS	compliant

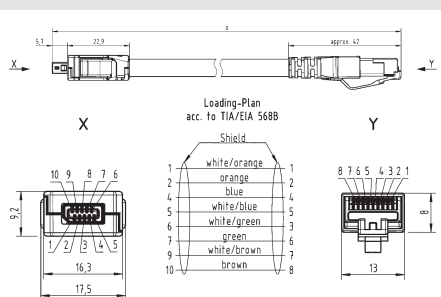
Specifications and approvals

IEC 61076-3-124



Details

Other cable lengths on request!

Identification	Cable length	Part number	Drawing (dimensions in mm)
HARTING ix Industrial® RJ45, Copper cable (round), Pre-assembled on both sides	0.2 m	09 48 261 2749 002	
	0.3 m	09 48 261 2749 003	
	0.4 m	09 48 261 2749 004	
	0.5 m	09 48 261 2749 005	
	0.7 m	09 48 261 2749 007	
	1 m	09 48 261 2749 010	
	1.5 m	09 48 261 2749 015	
	2 m	09 48 261 2749 020	
	2.5 m	09 48 261 2749 025	
	3 m	09 48 261 2749 030	
	5 m	09 48 261 2749 050	
	7.5 m	09 48 261 2749 075	
	10 m	09 48 261 2749 100	

4x 2x AWG 28/7
HARTING ix Industrial® Type A
HARTING ix Industrial® Type A



Cable

Features

- Miniaturised Ethernet data interface suitable for industry in acc. to IEC 61076-3-124 type A
- Robust industrial design
- 360° shielding
- Category of transmission Cat. 6_A
- 5000 mating cycles
- Flexible, space saving
- Suitable for all PoE versions

Technical characteristics

Number of cores	8
Core structure	4x 2x AWG 28/7
Connector 1	HARTING ix Industrial®, Type A
Connector 2	HARTING ix Industrial®, Type A
Limiting temperature	-40 ... +80 °C
Transmission characteristics	Cat. 6 _A , Class E _A up to 500 MHz
Data rate	10 Mbit/s, 100 Mbit/s, 1 Gbit/s, 2.5 Gbit/s, 5 Gbit/s, 10 Gbit/s
Material (cable)	PVC
Colour (cable)	Yellow
RoHS	compliant

Specifications and approvals

IEC 61076-3-124



Details

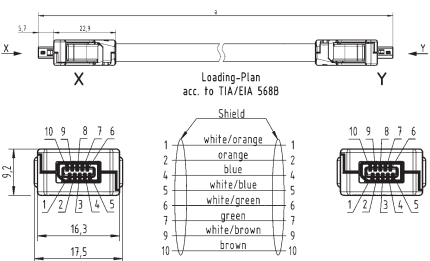
Other cable lengths on request!

Identification	Cable length	Part number	Drawing (dimensions in mm)
----------------	--------------	-------------	-------------------------------

HARTING ix Industrial®,
Copper cable (round),
Pre-assembled on both sides



0.2 m	09 48 262 6749 002
0.3 m	09 48 262 6749 003
0.4 m	09 48 262 6749 004
0.5 m	09 48 262 6749 005
0.7 m	09 48 262 6749 007
1 m	09 48 262 6749 010
1.5 m	09 48 262 6749 015
2 m	09 48 262 6749 020
2.5 m	09 48 262 6749 025
3 m	09 48 262 6749 030
5 m	09 48 262 6749 050
7.5 m	09 48 262 6749 075
10 m	09 48 262 6749 100



10x AWG 26
HARTING ix Industrial® Type B
HARTING ix Industrial® Type B

Cable



Features

- Miniaturised interface for signals and bus systems in acc. to IEC 61076-3-124 type B, suitable for industrial use
- Robust industrial design
- 360° shielding
- 5000 mating cycles
- Flexible, space saving

Technical characteristics

Number of cores	10
Core structure	10x AWG 26
Connector 1	HARTING ix Industrial®, Type B
Connector 2	HARTING ix Industrial®, Type B
Rated current	1.5 A
Rated voltage	50 V AC, 60 V DC
Limiting temperature	-30 ... +80 °C, -40 ... +80 °C
Material (cable)	PVC, PUR (polyurethane)
Colour (cable)	Grey

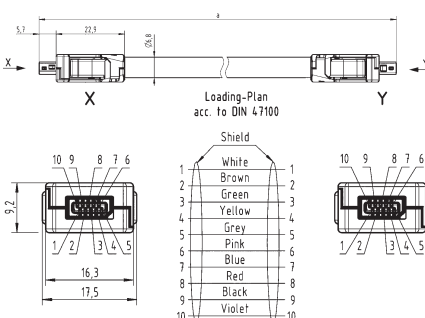
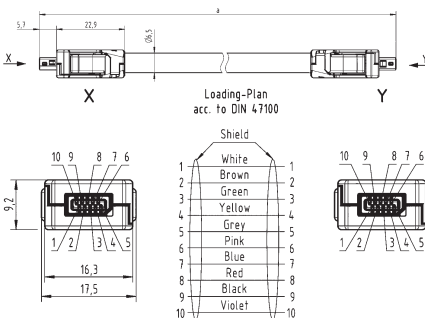
Specifications and approvals

IEC 61076-3-124



Details

Other cable lengths on request!

Identification	Cable length	Part number	Drawing (dimensions in mm)
HARTING ix Industrial®, Copper cable (round), Pre-assembled on both sides, PVC, -30 °C ... +80 °C	0.2 m	33 48 111 1A20 002	
	0.3 m	33 48 111 1A20 003	
	0.4 m	33 48 111 1A20 004	
	0.5 m	33 48 111 1A20 005	
	0.7 m	33 48 111 1A20 007	
	1 m	33 48 111 1A20 010	
	1.5 m	33 48 111 1A20 015	
	2 m	33 48 111 1A20 020	
	2.5 m	33 48 111 1A20 025	
	3 m	33 48 111 1A20 030	
	5 m	33 48 111 1A20 050	
HARTING ix Industrial®, Copper cable (round), Pre-assembled on both sides, PUR (polyurethane), -40 °C ... +80 °C	7.5 m	33 48 111 1A20 075	
	10 m	33 48 111 1A20 100	
	0.2 m	33 48 111 1A21 002	
	0.3 m	33 48 111 1A21 003	
	0.4 m	33 48 111 1A21 004	
	0.5 m	33 48 111 1A21 005	
	0.7 m	33 48 111 1A21 007	
	1 m	33 48 111 1A21 010	
	1.5 m	33 48 111 1A21 015	
	2 m	33 48 111 1A21 020	
	2.5 m	33 48 111 1A21 025	
	3 m	33 48 111 1A21 030	
	5 m	33 48 111 1A21 050	
	7.5 m	33 48 111 1A21 075	
	10 m	33 48 111 1A21 100	