

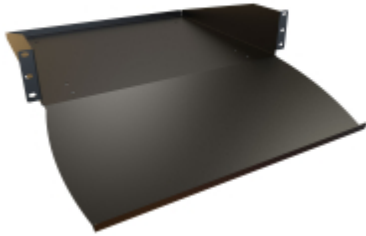


Quality Products. Service Excellence.

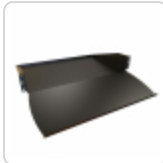
Keyboard & Equipment Rack Shelf *RKBM Series*

Load rated to 100 lbs (45 kg)

Features



- Constructed of 14-gauge steel.
- Mounts to rack rails using 3.47" (2U) of vertical rack space.
- Rear lip to reduce the chance of equipment being pushed off the rear of the shelf.
- The new ergonomic designed keyboard tray supports a full-size keyboard.
- Finished in textured RAL9005 black powder coat. Complies with the Greenguard guidelines for indoor air quality.
- 100 lbs (45 kg) **load rating**.
- TAA-compliant for federal GSA schedule purchases within the USA.
- RoHS and REACH compliant.
- Manufactured in North America.



Accessories

- Hardware for Rack Mounting Solutions



Part No.	Overall Dimensions		Mounting Dimensions		
	Keyboard Depth	Rear Shelf Depth	Rack Units	Height	Width
RKBM19BK1	8.66	15.00	2U	3.47	19.00
RKBM23BK1	8.66	15.00	2U	3.47	23.00

Data subject to change without notice