

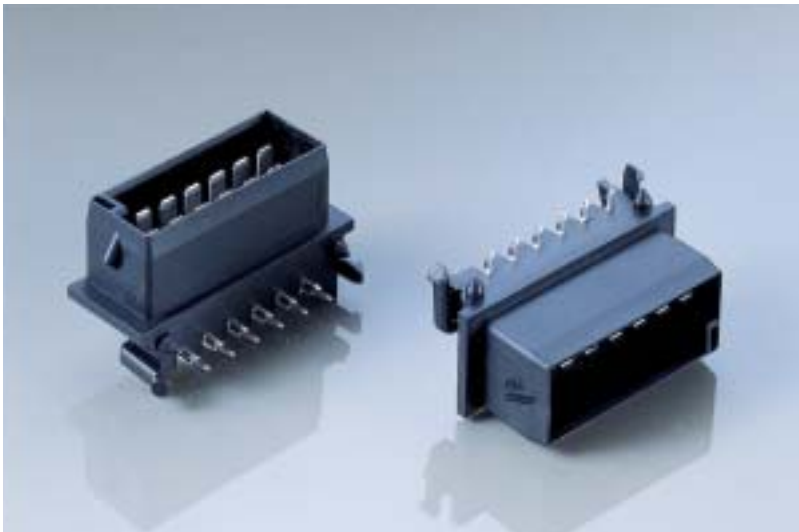


Pin headers

6/12 way - 3.0 x 0.8 mm pin headers

Features

- Stitch-in pin header
- Right version for PCB
- Plastic hooks for fixation
- Mechanical polarization



Performance characteristics

- Temperature range: from -40°C to +85°C
- Contact pull out force: > 70 N

Construction

- Housing material: PA
- Tab material and plating: CuZn/Sn

Part Numbers	No. of position	Terminal size	Colour
3 313 02 01	12	3.0 x 0.8 mm	Black
3 313 02 02	6	3.0 x 0.8 mm	Black

Dimensional characteristics

For the 6 way pin header one row is closed

