



Part Number : [50842060](#)

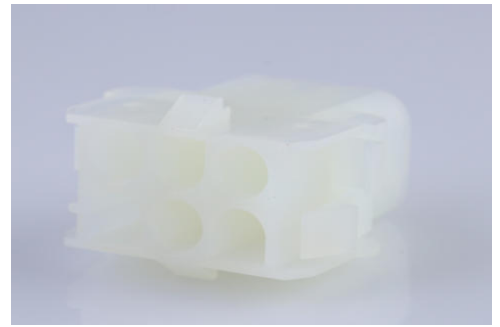
Product Description : 2.13mm Diameter MLX Pin and Socket Receptacle, 6 Circuits, Natural

Series Number : 42022

Status : Active

Product Category : Connector Housings

Engineering Part Number : 42022-6A



Documents and Resources

Drawings

[050842060_sd.pdf](#)

[PK-42022-XX-001.pdf](#)

3D Models and Design Files

[STEP AP242](#)

[SOLIDWORKS](#)

[Creo](#)


Specifications

[PS-42022-0001-001.pdf](#)

[TS-42022-0001-001.pdf](#)

Product Environment Compliance

Compliance

GADSL/IMDS	Not Relevant
China RoHS	 per SJ/T 11365-2006
EU ELV	Not Relevant
Low-Halogen Status	Low-Halogen per IEC 61249-2-21
REACH SVHC	Not Contained per D(2025)7771-DC (04 Feb 2026)
EU RoHS	Compliant per EU 2015/863

[Compliance Statements](#)

- EU RoHS

- REACH SVHC
- Low-Halogen

Industry Documents

- IPC 1752A Class C
- IPC 1752A Class D
- Molex Product Compliance Declaration
- IEC-62474
- chemSHERPA (xml)

Substances of Interest

- PFAS

EU RoHS Certificate of Compliance

Additional Product Compliance Information

Part Details

General

Status	Active
Category	Connector Housings
Series	42022
Description	2.13mm Diameter MLX Pin and Socket Receptacle, 6 Circuits, Natural
Application	Power, Wire-to-Wire
Comments	Glow Wire Equivalent Part Number 366440005; Maximum current per contact 20A if used with 36663 and 36664 terminal
Product Name	MLX
UPC	800753577459

Agency

CSA	LR19980
UL	E29179

Physical

Circuits Detail	6
Circuits (maximum)	6
Color - Resin	Natural

Gender	Receptacle
Glow-Wire Capable	No
Keying to Mating Part	No
Lock to Mating Part	Yes
Material - Resin	Nylon
Net Weight	5.080/g
Number of Rows	2
Packaging Type	Carton
Panel Mount	Yes
Pitch - Mating Interface	6.35mm
Polarized to Mating Part	Yes
Stackable	No
Temperature Range - Operating	-55° to +105°C

Solder Process Data

Lead-Free Process Capability	N/A
------------------------------	-----

Mates With / Use With

Mates with Part(s)

Description	Part Number
2.13mm Diameter MLX Power Crimp Housing Plugs	42021

Use with Part(s)

Description	Part Number
Pre-Crimped Lead MLX Male-to-MLX Male, Tin (Sn) Plating, 150.00mm Length, 18 AWG, Black	797582029
Pre-Crimped Lead MLX Male-to-MLX Male, Tin (Sn) Plating, 300.00mm Length, 18 AWG, Black	797582030
Pre-Crimped Lead MLX Female-to-MLX Female, Tin (Sn) Plating, 150.00mm Length, 18 AWG, Black	797582031
Pre-Crimped Lead MLX Female-to-MLX Female, Tin (Sn) Plating,	797582032

300.00mm Length, 18 AWG, Black	
MLX Male Crimp Terminals	<u>42023</u>
MLX Female Crimp Terminals	<u>42024</u>

This document was generated on May 04, 2026