

## Grove - Step Counter (BMA456)

SKU 101020583

★★★★★

Grove - Step Counter(BMA456), acceleration

- 1 +

CN Warehouse



Add to Cart

### Description

### Documents

### Learn

### Reviews

### FAQs

The Grove - Step Counter(BMA456) is based on BMA456, which is an extremely small, triaxial, low-g high performance accelerations module. Thanks to the special algorithm of BOSCH, we made this module a portable pedometer.

Relaible, cost-effective, on top of that, it's very easy to use, you can easily add this plug and play module on your wearable devices.

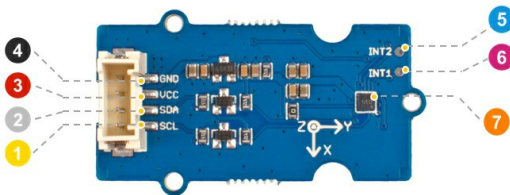
### Features

- On chip FIFO
- Ultra-low power
- On-chip interrupt
- Programmable functionality

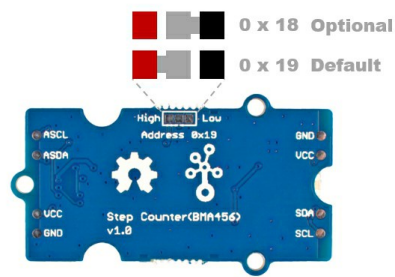
### Typical Application

- Applications with height constrains
- Plug and Play Step-Counter solution with watermark functionality
- Fitness applications / Activity Tracking
- Power management for wearable applications
- Display on/off and profile switching
- User interface without hardware buttons
- E-compass tilt compensation and data synchronization
- High performance angle measurements

### Pin Out



- ④ GND: connect this module to the system GND
- ⑤ INT2: interrupt output 1(Input for external FIFO sync)
- ③ VCC: you can use 5V or 3.3V for this module
- ⑥ INT1: interrupt output 1(Input for external FIFO sync)
- ② SDA: I²C serial data
- ⑦ The BMA456 module
- ① SCL: I²C serial clock



Technical details

|                    |   |
|--------------------|---|
| Dimensions         | 40mm x20mm x7mm                             |
| Weight             | G.W 9.2g                                    |
| Battery            | Exclude                                     |
| Operating Voltage  | 3.3V / 5V                                   |
| Acceleration Range | ±2g, ±4g, ±8g, ±16g                         |
| Sensitivity        | 16384 @±2g 8192 @ ±4g 4096 @±8g 2048 @ ±16g |
| Interface          | I2C   |
| I2C Address        | 0x19(default) / 0x18(optional)              |

Part List

|                              |   |
|------------------------------|---|
| Grove - Step Counter(BMA456) | 1 |
| Grove Cable                  | 1 |

ECCN/HTS

|          |              |
|----------|--------------|
| ECCN     | 7A994        |
| HSCODE   | 9029900000   |
| USHSCODE | 90299080     |
| UPC      | 841454121442 |

Company

Official Website  
About Seeed  
Solution  
Distributors  
Careers  
Contacts

Help Center

How to Get Help  
FAQ  
Technical Support  
Shipping & Order  
Warranty & Returns  
Payment Information

Community

Project Hub  
Forum  
Blog  
Wiki

Stay Tuned

