

Features

- Uses wiring-easy terminal block
- High attenuation over a broad band range by two-stage ferrite core circuit construction
- Wide range lineup (5 to 30A)
- Bleeder resistor for electric shock protection

Applications

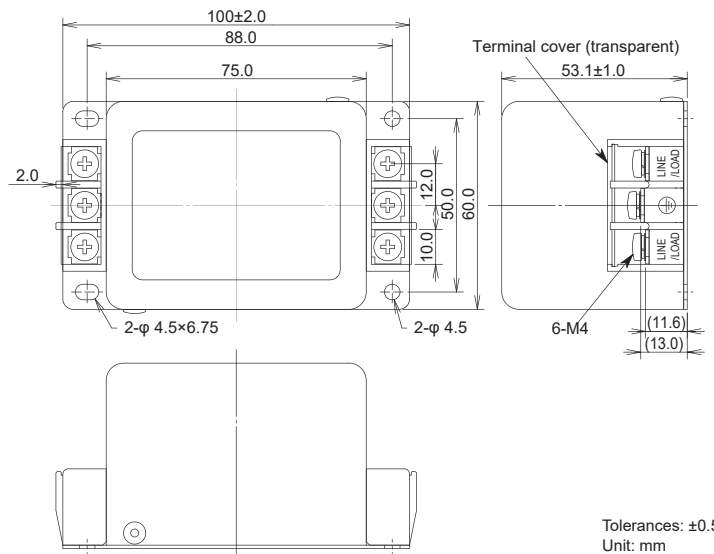
- Information processing devices, office appliances, various control systems and etc.



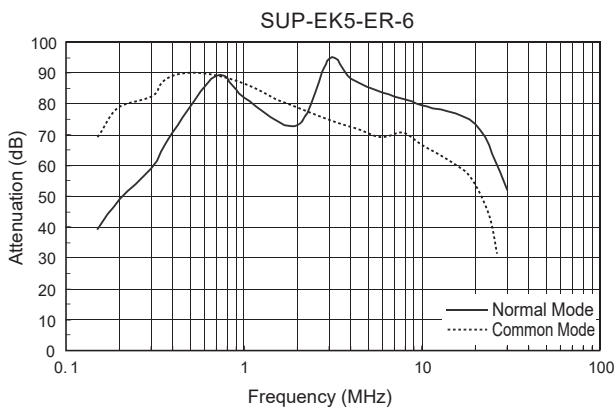
| Safety Standard | | File No. |
|-----------------|-----------------|-----------|
| UL | :UL-1283 | E78644 |
| cUL | :CSA C22.2 No.8 | E78644 |
| TÜV | :EN60939-3 | R50006837 |

*File No. may be revised without notice. Please contact us at the time of your request for certifications.

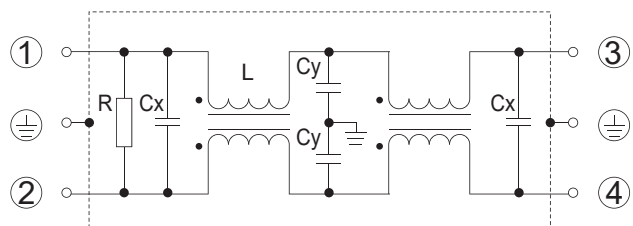
• **Dimensions (5~30A)**



• **Static characteristics (Representative example)**



• **Circuit (5 ~ 30A)**



Electrical Specifications

Rated Voltage **250Vac**

| Safety Standard | Model Number | Rated Current (A) | Test Voltage | Insulation Resistance | Leakage Current max. | Voltage Drop max. | Temperature Rise max. | Operating Temperature (°C) | Insertion losses | | Weight typ.(g) |
|-----------------|---------------|-------------------|--|---|----------------------------|-------------------|-----------------------|---|-------------------|-------------------|----------------|
| | | | | | | | | | Normal Mode (MHz) | Common Mode (MHz) | |
| | SUP-EK5-ER-6 | 5 | Line to Case 2,500Vac 50/60Hz 60sec | Line to Case 100MΩmin (at 500Vdc) | 1mA (at 250Vac 60Hz) | 1.0Vac | 45K | -25 ~ +50 (100°C with Temp. rise) | 0.4 ~ 20 | 0.15 ~ 10 | 500 |
| | SUP-EK10-ER-6 | 10 | | | | | | | 0.5 ~ 30 | 0.2 ~ 10 | |
| | SUP-EK15-ER-6 | 15 | | | | | | | | 0.4 ~ 10 | |
| | SUP-EK20-ER-6 | 20 | | | | | | | *0.6 ~ 30 | *2.0 ~ 30 | |
| | SUP-EK30-ER-6 | 30 | | | | | | | | | |

Guaranteed attenuation is more than 40dB in normal and common mode. (*more than 35dB)
Available leakage current 70μA max.(250Vac, 60Hz) type for medical equipments and low leakage current equipments.