

RoHS Compliant



TR xx 25 x 1 xxxx G

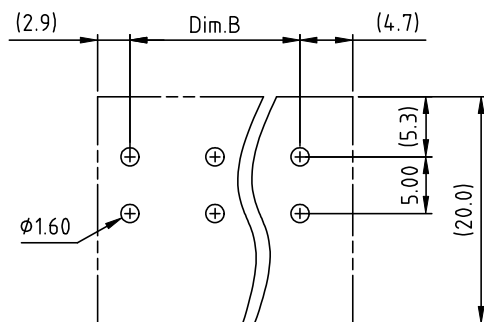
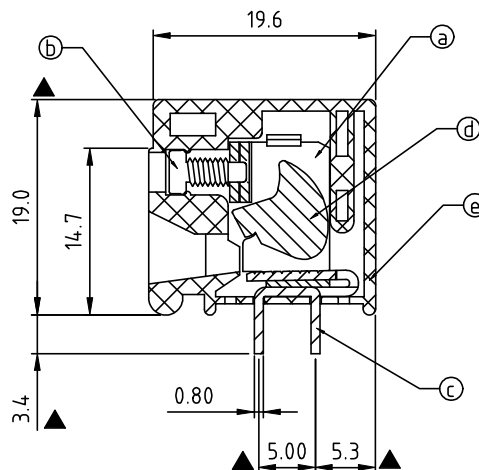
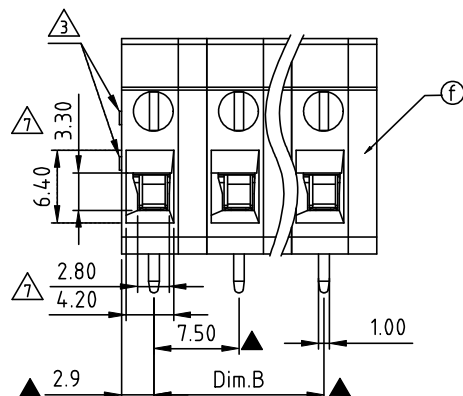
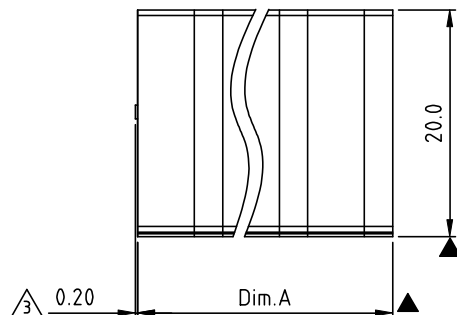
02 2Poles
03 3Poles
... ..
16 16Poles

Color

0 Black (RAL9005)
2 Red (RAL3001/D)
3 Orange(RAL2011/P)
4 Yellow(RAL1018/A)
5 Green(RAL6018/T)
6 Blue (RAL5015/A)
8 Grey(RAL7035/D)
C Green(RAL 6018/U)

G RoHS compliant
(lead<4%)
In copper Alloy

0000 Standard @ Logo
000A Standard ANY Logo
Any special item by
customer request,
please contact sales
department.



P.C.B LAYOUT
TOP VIEW

N = Number of poles
Dim A=Nx7.5
Dim B=(N-1)x7.5

	Dim A	Dim B
2-6p	±0.20	±0.20
7-12p	±0.30	±0.30
13-16p	±0.40	±0.40

REV	SIGN	DATE	DESCRIPTION	APPROVER
D	△	11.01'05	Standard spec is changed.	Marivn
E	△	02/01'07	Soldering temperature is changed from 245°C to250°C	Marivn
F	△	07/12-18	Add two cylinder	Chen Bo
	△	07/12-18	Add the symbol of critical dimension	Chen Bo
	△	07/12-18	Add RoHS Compliant	Chen Bo
	△	07/12-18	Some text content has been modified	Chen Bo
	△	07/12-18	Add some dimensional label	Chen Bo
	△	07/12-18	Add the tolerance table	Chen Bo

THIS IS CAD DRAWING, DO NOT REVISE MANUALLY!!!

△△ Material

- Item a Terminal body(metal housing): steel stamped Zinc plating
- Item b Terminal screw: Steel Zinc plating “-” slot type
- Item c Contacts: Brass,Bright Tin plated over Nickel plated.
- Item d Firm wire chunk: steel Zinc plating
- Item e Insulator (housing): Thermoplastic (UL94V-0)
- Item f Insulator (housing): Thermoplastic (UL94V-0)

Electrical cULus

- Voltage rating: 300VAC
- Current rating: 20A
- Wire range:
- Solid wire(AWG): 12-22
- Stranded wire(AWG): 12-22
- Torque(Lb-In): 2.4
- Screw: M2.5
- Wire strip length: 10-11mm
- Withstanding Voltage: 1.6KV
- Operating temperature: -40°C to +115°C
- Wave soldering temperature: 260°C±5°C/5 Sec
- Safety Approval: cULus
- △ Critical dimension: △

Amphenol
ANYTEK

CUSTOMER COPY

ALL RIGHTS RESERVED. REPRODUCTION OR ISSUE TO THIRD PARTIES IN ANY FORM WHATEVER IS NOT PERMITTED WITHOUT WRITTEN AUTHORITY FROM THE PROPRIETOR. PROPERTY OF ANYTEK TECHNOLOGY CO., LTD

TITLE		TR 7.5 Series Horizontal (180D wire inlet)			
PART NO.	TRxx25x1xxxxG			DWG NO.	8TR0101
APPROVED	CHECKED	DESIGNED	DRAWN	CUST NO.	
		Chen Bo 07/12-18	Chen Bo 07/12-18		Tolerance
					X. ±0.50
					X.X ±0.30
					X.XX ±0.10
					X° ±1°
SHEET: 01/01		UNIT: mm		SCALE: NONE	
				REV.: F	