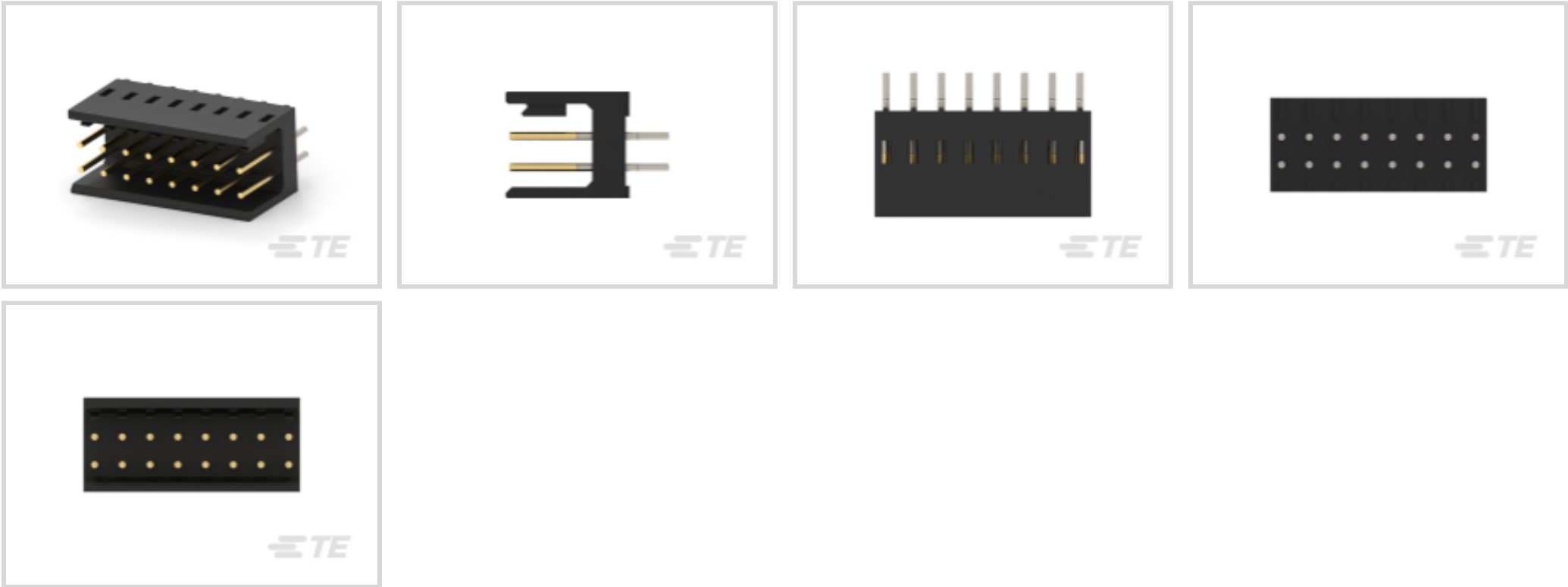




Connectors > PCB Connectors > PCB Headers & Receptacles



PCB Connector Type: **PCB Mount Header**

PCB Mount Orientation: **Vertical**

Connector System: **Board-to-Board**

Number of Positions: **8**

Number of Rows: **2**

Features

Product Type Features

PCB Connector Type	PCB Mount Header
Connector System	Board-to-Board
Header Type	Partially Shrouded
Connector & Contact Terminates To	Printed Circuit Board
Connector Product Type	Connector Assembly

Configuration Features

Board-to-Board Configuration	Parallel
PCB Mount Orientation	Vertical
Number of Positions	8
Number of Rows	2

Body Features

Primary Product Color	Black
-----------------------	-------

Contact Features

Contact Mating Area Plating Material Thickness	.8 µm[31.5 µin]
--	-----------------



Contact Mating Area Plating Material	Gold Flash
Contact Type	Pin
Contact Current Rating (Max)	3 A

Termination Features

Termination Method to PCB	Through Hole - Solder
---------------------------	-----------------------

Mechanical Attachment

PCB Mount Retention	Without
PCB Mount Alignment	Without
Connector Mounting Type	Board Mount
Mating Alignment	Without

Housing Features

Housing Material	PA 4.6
Centerline (Pitch)	2.54 mm[.1 in]

Dimensions

Row-to-Row Spacing	2.54 mm[.1 in]
--------------------	----------------

Operation/Application

Circuit Application	Signal
---------------------	--------

Industry Standards

UL Flammability Rating	UL 94V-0
------------------------	----------

Packaging Features

Packaging Method	Carton
------------------	--------

Product Compliance

For compliance documentation, visit the product page on TE.com>

EU RoHS Directive 2011/65/EU	Compliant
EU ELV Directive 2000/53/EC	Compliant
China RoHS 2 Directive MIIT Order No 32, 2016	No Restricted Materials Above Threshold
EU REACH Regulation (EC) No. 1907/2006	Current ECHA Candidate List: JAN 2025 (247) Candidate List Declared Against: JUNE 2024 (241) Does not contain REACH SVHC
Halogen Content	Not Low Halogen - contains Br or Cl > 900



ppm.

Solder Process Capability

Wave solder capable to 265°C

Product Compliance Disclaimer

This information is provided based on reasonable inquiry of our suppliers and represents our current actual knowledge based on the information they provided. This information is subject to change. The part numbers that TE has identified as EU RoHS compliant have a maximum concentration of 0.1% by weight in homogenous materials for lead, hexavalent chromium, mercury, PBB, PBDE, DBP, BBP, DEHP, DIBP, and 0.01% for cadmium, or qualify for an exemption to these limits as defined in the Annexes of Directive 2011/65/EU (RoHS2). Finished electrical and electronic equipment products will be CE marked as required by Directive 2011/65/EU. Components may not be CE marked. Additionally, the part numbers that TE has identified as EU ELV compliant have a maximum concentration of 0.1% by weight in homogenous materials for lead, hexavalent chromium, and mercury, and 0.01% for cadmium, or qualify for an exemption to these limits as defined in the Annexes of Directive 2000/53/EC (ELV). Regarding the REACH Regulation, the information TE provides on SVHC in articles for this part number is based on the latest European Chemicals Agency (ECHA) ‘Guidance on requirements for substances in articles’ posted at this URL: <https://echa.europa.eu/guidance-documents/guidance-on-reach>

Compatible Parts

TE Part # 4-829538-9
2X49P MOD II SHROUDED HEADER, ST

TE Part # 829538-5
2X5P MOD II SHROUDED HEADER, ST

Also in the Series | AMPMODU Headers

Automotive Headers(1)

Board-to-Board Headers & Receptacles(1576)

Connector Contacts(47)

Connector Hardware(1)

PCB Headers & Receptacles(1621)

Rectangular Power Connectors(43)

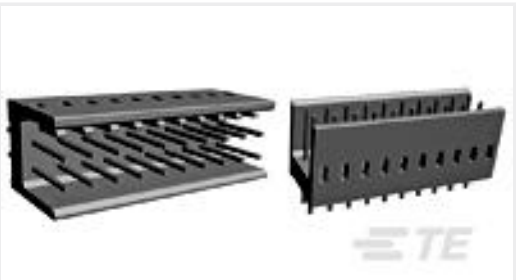
Wire-to-Board Connector Assemblies & Housings(5)

Wire-to-Board Headers & Receptacles (114)

Customers Also Bought



TE Part #350826-4
04P UMNL HDR ASSY PC 94VO LF



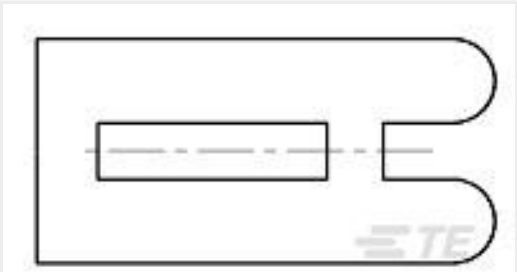
TE Part #826469-9
2X9P MOD II SHROUDED HEADER, ST



TE Part #CAT-M5833-F3492A
Female-on-Board Connector, Top Entry



TE Part #829538-8
2X8P MOD II SHROUDED HEADER, ST



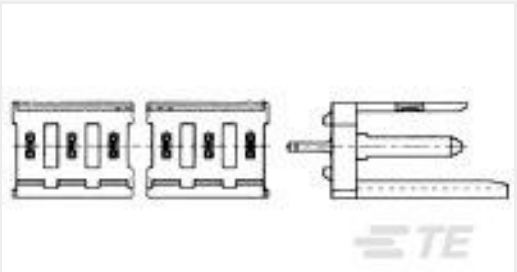
TE Part #926498-3
MOD2 KODIERSTUECK



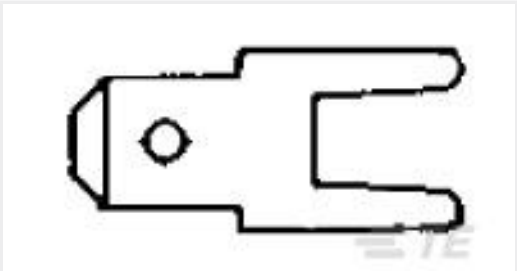
TE Part #5177984-5
0.8FH,P05H.5,120,08/Sn,TU



TE Part #829538-3
2X3P MOD II SHROUDED HEADER, ST



TE Part #280609-2
2P MOD 1 SHROUDED HEADER, ST, 0.4 Au



TE Part #1-726388-2
187 FASTON,TAB,TPBR

Documents

CAD Files

3D PDF

3D

Customer View Model

ENG_CVM_CVM_829538-4_F.2d_dxf.zip

English

Customer View Model

ENG_CVM_CVM_829538-4_F.3d_igs.zip

English

Customer View Model

ENG_CVM_CVM_829538-4_F.3d_stp.zip

English

By downloading the CAD file I accept and agree to the [Terms and Conditions](#) of use.