



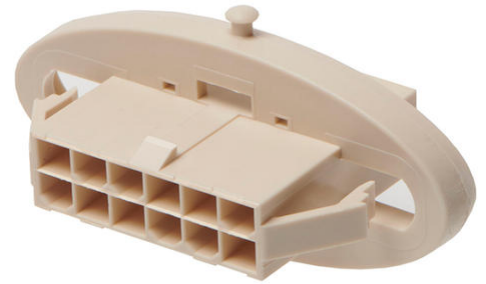
Part Number : [2070170016](#)

Product Description : Mini-Fit Sigma Sealed Plug Housing, Dual Row, 4.20mm Pitch, 16 Circuits, UL94V-0, Natural

Series Number : 207017

Status : Active

Product Category : Connector Housings



Documents and Resources

Drawings

[2070170016_sd.pdf](#)

[2070170000-PK-000.pdf](#)

3D Models and Design Files

[STEP AP242](#)

[SOLIDWORKS](#)

[Creo](#)

Specifications

[2070170000-AS-000.pdf](#)

[2070170000-PS-000.pdf](#)

[2070170000-TS-000.pdf](#)

Product Environment Compliance

Compliance

| | |
|--------------------|---|
| GADSL/IMDS | Not Relevant |
| China RoHS |  per SJ/T 11365-2006 |
| EU ELV | Not Relevant |
| Low-Halogen Status | Not Low-Halogen per IEC 61249-2-21 |
| REACH SVHC | Contains 1,1'-(Ethane-1,2-diyl)bis[pentabromobenzene] per D(2025)7771-DC (04 Feb 2026) |
| EU RoHS | Compliant per EU 2015/863 |

Compliance Statements

- EU RoHS
- REACH SVHC
- Low-Halogen

Industry Documents

- IPC 1752A Class C
- IPC 1752A Class D
- Molex Product Compliance Declaration
- IEC-62474
- chemSHERPA (xml)

Substances of Interest

- PFAS

EU RoHS Certificate of Compliance

Additional Product Compliance Information

Part Details

General

| | |
|--------------|---|
| Status | Active |
| Category | Connector Housings |
| Series | 207017 |
| Description | Mini-Fit Sigma Sealed Plug Housing, Dual Row, 4.20mm Pitch, 16 Circuits, UL94V-0, Natural |
| Application | Power, Wire-to-Wire |
| Product Name | Mini-Fit Sigma Sealed |
| UPC | 193264928477 |

Agency

| | |
|----|--------|
| UL | E29179 |
|----|--------|

Physical

| | |
|--------------------|---------|
| Circuits (maximum) | 16 |
| Color - Resin | Natural |
| Flammability | 94V-0 |
| Gender | Plug |
| Glow-Wire Capable | No |

| | |
|-------------------------------|----------------|
| Keying to Mating Part | No |
| Lock to Mating Part | Yes |
| Material - Resin | Nylon |
| Net Weight | 8.597/g |
| Number of Rows | 2 |
| Packaging Type | Bag |
| Panel Mount | Yes |
| Pitch - Mating Interface | 4.20mm |
| Pitch - Termination Interface | 4.20mm |
| Polarized to Mating Part | Yes |
| Stackable | No |
| Temperature Range - Operating | -40° to +105°C |

Mates With / Use With

Mates with Part(s)

| Description | Part Number |
|---|---------------|
| Mini-Fit Jr. Dual Row Receptacle Housings | <u>46992</u> |
| Mini-Fit Jr. Receptacle Housings | <u>5557</u> |
| Mini-Fit TPA2 and Mini-Fit Sigma Dual Row Receptacle Housings | <u>172708</u> |

Use with Part(s)

| Description | Part Number |
|---|-------------------|
| Mini-Fit Sigma Sealed Cap for 16 Circuit Plug Housing | <u>2070190016</u> |
| Mini-Fit Sigma Terminal Position Assurance (TPA) Retainer, 4.20mm Pitch, UL 94V-0, Glow-Wire Capable, 8 Circuits, Natural | <u>1727092008</u> |
| Mini-Fit TPA2/Sigma Male Crimp Terminals | <u>172765</u> |
| Mini-Fit TPA2/Sigma Male Crimp Terminals | <u>203070</u> |