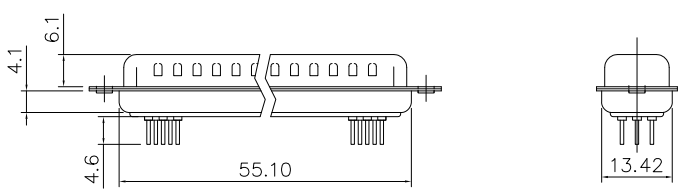
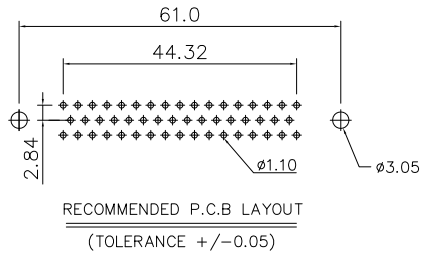
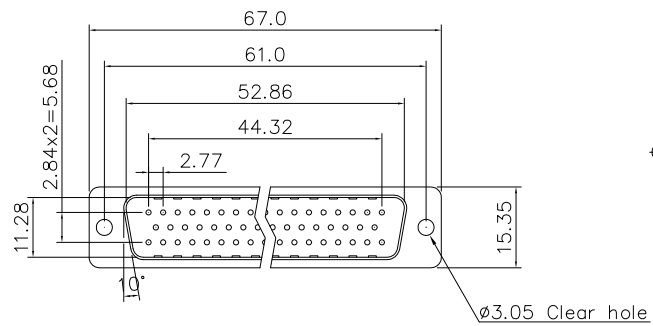
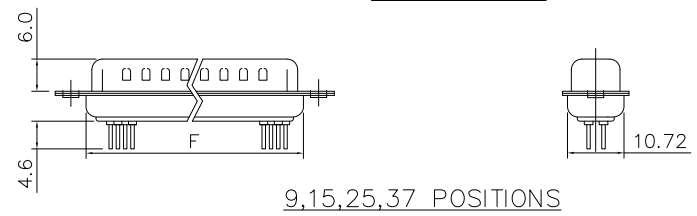
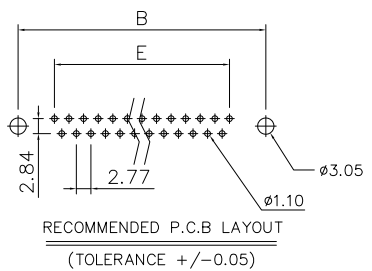
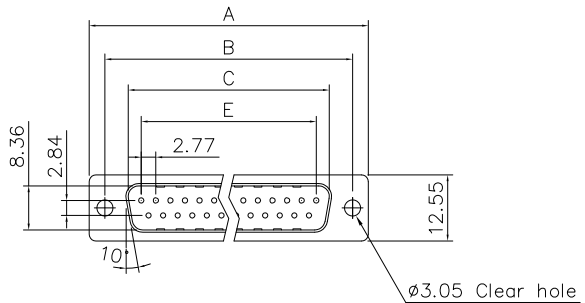


This document is the property of Amphenol Corporation and is delivered on the express condition that it is not to be disclosed, reproduced or used, in whole or in part, for manufacture or sale by anyone other than Amphenol Corporation without its prior consent, & that no right is granted to disclose or to use any information in this document.

Customer drawing



50 POSITIONS

Dimensions

Positions	A	B	C	E	F
9	30.81	24.99	16.92	11.08	19.20
15	39.20	33.30	25.25	19.39	27.70
25	53.04	47.04	38.96	33.24	41.10
37	69.40	63.50	55.42	49.86	57.30



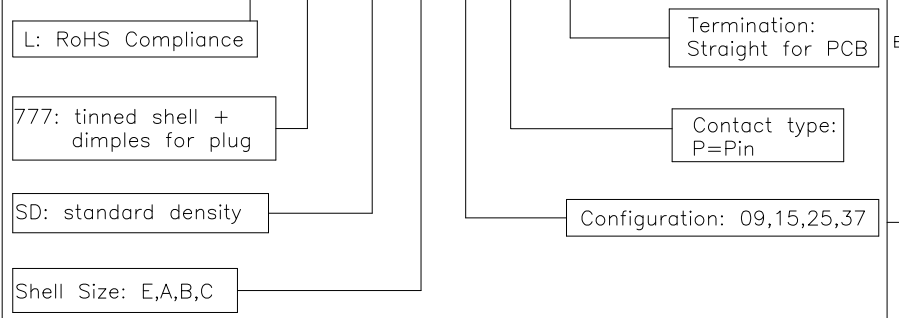
SYM	ECN	DESCRIPTION	DATE	APPROVED
1	HK--	First Release Drawing	07/18/08	IP
2	HK--	Update the dimensions	09/02/13	IP

D-SUB TECHNICAL DATA

SHELL : Steel 100u"min. tin over 50u" min. nickel over 50u" min. copper
 BODY : Glass filled thermoplastic.
 CONTACTS : Copper Alloy
 15u" Gold over 50u" min nickel on mating area
 100u" min tin over 50u" min nickel on solder area
 ELECTRICAL: Voltage rating : 250 V Rms to 60 Hz
 Current rating : 3A
 Withstanding Voltage >1000 V Rms to 60 Hz for one minute
 Insulation resistance >1000 M Ohms
 Contact resistance 20 mOhms max.
 MARKING : Amphenol...(Series No.)
 Commercial reference
 Manufacturing date

PRODUCT CODE

L 777 SD X XX P OL2



UNLESS OTHERWISE SPECIFIED TOLERANCES		APPROVAL		DATE
U.S.	METRIC	DRAWN	Feltz Liu	09/02/13
.X +/-	0.50	CHECKED	Tony Tang	09/02/13
.XX +/-	0.30	CHECKED		
.XXX +/-	0.20			
FRACTIONS +/-	5'	DRAWING FILE :		
ANGLES +/-		ANGLE OF PROJECTION		
FOR MATERIALS AND FINISHES SEE NOTES				
REMOVE SHARP EDGES				
DIMENSIONS		SCALE NONE SHEET 1 OF 1		
U.S.	INCHES	SIZE DRAWING NO. A4 C L777SDXXXPOL2 REV. 2		
METRIC	MM			

Amphenol
 Amphenol East Asia Limited
 TITLE
 Stamped and Formed connector, SD series
 SCALE NONE SHEET 1 OF 1