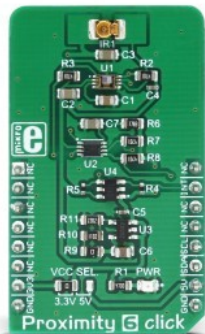


# Proximity 6 Click



PID: MIKROE-3048

**Proximity 6 click** is a versatile proximity detection device on a Click board™. It can detect a foreign object distanced up to 20cm. The Click board™ features a detection sensor IC that can trigger a threshold based interrupts, which makes this Click board™ capable of detecting even simple gesture movements. The advanced onboard IC sensor features LED driver section, a light sensor with the integrated analog front end (AFE), 14 bit analog to digital converter (ADC), and digital engine for processing and aggregation of the measurement result, which simplifies the firmware development. The ambient light cancellation includes both digital and optical filtering, resulting in increased detection reliability.

**Proximity 6 click** is a versatile proximity detection device on a Click board™. It can detect a foreign object distanced up to 20cm. The Click board™ features a detection sensor IC that can trigger a threshold based interrupts, which makes this Click board™ capable of detecting even simple gesture movements. The advanced onboard IC sensor features LED driver section, a light sensor with the integrated analog front end (AFE), 14 bit analog to digital converter (ADC), and digital engine for processing and aggregation of the measurement result, which simplifies the firmware development. The ambient light cancellation includes both digital and optical filtering, resulting in increased detection reliability.

With its high sensitivity and signal to noise ratio, this Click board™ is ideally suited for a range of applications that rely on accurate and reliable proximity detection. It can be used for proximity activated surveillance systems, equipment lid closing, object proximity detection, simple gesture activated HID interface, and other similar applications which rely on an accurate object proximity detection.

Mikroe produces entire development toolchains for all major microcontroller architectures.

Committed to excellency, we are dedicated to helping engineers bring the project development up to speed and achieve outstanding results.



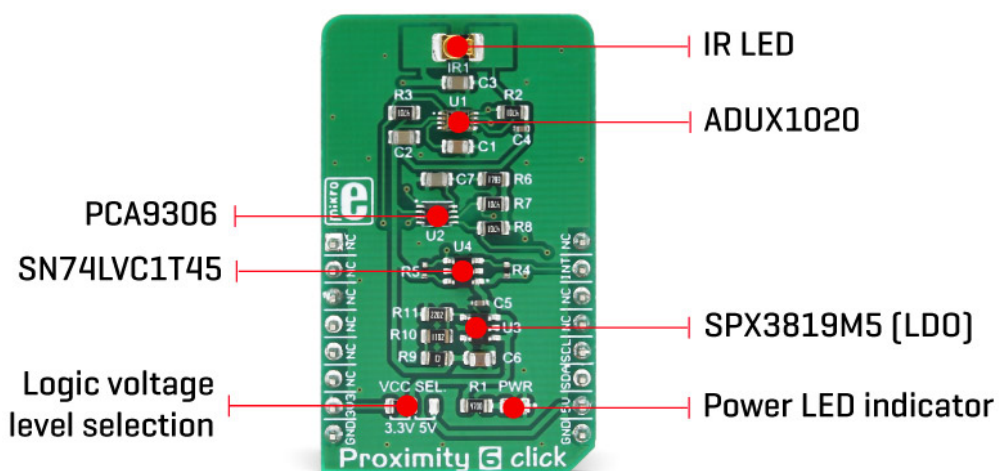
ISO 27001: 2013 certification of informational security management system.  
ISO 14001: 2015 certification of environmental management system.  
OHSAS 18001: 2008 certification of occupational health and safety management system.



ISO 9001: 2015 certification of quality management system (QMS).

## How does it work?

The main sensor IC on the Click board™ is the [ADUX1020](#), a photometric sensor for the gesture and proximity detection, from [Analog Devices](#). Among other sections, this IC contains a LED driver, used to drive an externally connected LED, which provides feedback for the ADUX1020 sensory sections. Therefore, the LED should be chosen so that its spectrum matches the spectral sensitivity of the on-chip light sensor. For this reason, the Click board™ is equipped with the narrow beam LED from OSRAM with its spectral response characteristic peaking at 860nm, which is a perfect choice for this application.



The proximity detection consists of sending a pulse to the LED while measuring the response of the reflected light. Each data sample is constructed from the sum of a configurable number of individual pulses. There can be up to 64 such pulses. Additional intersample averaging can be applied to these values for the improved noise reduction, and the results are stored in the FIFO buffer, from where the MCU can read them via the standard I2C interface. Most of the parameters are user configurable, such as the sampling frequency, a number of pulses, averaging parameters and more. More in-depth information about the registers can be found in the ADUX1020 datasheet.

Aimed towards the low consumption market, the ADUX1020 uses a rather low voltage range, between 1.7V and 1.9V. Since the most of the MCUs use either 3.3V or 5V, the Click board™ has to be equipped with the supporting circuitry, which is used to convert the MCU signal levels to levels acceptable for the ADUX1020 IC. This supporting circuitry consists of a small LDO that provides 1.8V for the proper ADUX1020 IC operation, as well as the bidirectional I2C voltage level translator IC (PCA9306), and a single bit, dual voltage level translator IC (SN74LVC1T45), used for proper conversion of the logic voltage levels. These level shifting ICs are supplied with the referent 1.8V from the LDO from one side, and selectable VCC voltage from the other side. VCC voltage can be selected between 3.3V and 5V, by using the SMD jumper labeled as VCC SEL. This allows both 3.3V and 5V MCUs to be interfaced with the ADUX1020 IC.

Proximity 6 click offers an interrupt output pin that can be used to trigger an interrupt on the host MCU. The ADUX1020 IC interrupt engine allows several interrupt sources, which can be

Mikroe produces entire development toolchains for all major microcontroller architectures.

Committed to excellency, we are dedicated to helping engineers bring the project development up to speed and achieve outstanding results.



ISO 27001: 2013 certification of informational security management system.  
ISO 14001: 2015 certification of environmental management system.  
OHSAS 18001: 2008 certification of occupational health and safety management system.



ISO 9001: 2015 certification of quality management system (QMS).

used to trigger a state change on the INT pin. These sources include configurable FIFO buffer threshold, two pairs of proximity detection interrupts (proximity OFF and proximity ON), sample interrupts, and even a watchdog interrupt. The INT pin itself is highly configurable. For example, it can be set to be either active HIGH or active LOW, or it can be set to output the internal clock of the ADUX1020 IC. When asserted, this pin triggers an MCU interrupt, informing it that the configured interrupt event has occurred. The MCU can then read the desired register output, not having to poll it constantly, which saves both MCU cycles and power. The INT pin is routed via the level shifting IC to the mikroBUS™ INT pin.

As already mentioned, detailed information on the ADUX1020 IC registers can be found in the datasheet. However, MikroElektronika provides a library that contains functions compatible with the MikroElektronika compilers, which can be used for simplified programming of the Proximity 6 click. The library also contains an example application, which demonstrates its use. This example application can be used as a reference for custom designs.

## Specifications

| Type             | Proximity   |
|------------------|---|
| Applications     | It can be used for proximity activated surveillance systems, equipment lid closing, object proximity detection, simple gesture activated HID interface, and other similar applications which rely on an accurate object proximity detection.            |
| On-board modules | ADUX1020, a photometric sensor for gesture and proximity detection, from Analog Devices; PCA9306, a bidirectional I2C voltage level translator IC from Texas Instruments; SN74LVC1T45, a single-Bit dual-supply bus transceiver from Texas Instruments. |
| Key Features     | Accurate proximity detection, simple gesture detection, integrated data aggregation algorithm, high sensitivity, low power consumption, can be interfaced to both 3.3V and 5V MCUs, and more.   |
| Interface        | I2C   |
| Feature          | No ClickID  |
| Compatibility    | mikroBUS™   |
| Click board size | M (42.9 x 25.4 mm)  |
| Input Voltage    | 3.3V or 5V  |

## Pinout diagram

This table shows how the pinout on **Proximity 6 click** corresponds to the pinout on the mikroBUS™ socket (the latter shown in the two middle columns).

| Notes | Pin |  | Pin | Notes |
|-------|-----|--|-----|-------|
|-------|-----|--|-----|-------|

Mikroe produces entire development toolchains for all major microcontroller architectures.


Committed to excellency, we are dedicated to helping engineers bring the project development up to speed and achieve outstanding results.



ISO 27001: 2013 certification of informational security management system.  
ISO 14001: 2015 certification of environmental management system.  
OHSAS 18001: 2008 certification of occupational health and safety management system.



ISO 9001: 2015 certification of quality management system (QMS).

|  |             |   |      |     |    |            |                  |
|---|-------------|---|------|-----|----|------------|------------------|
|   | NC          | 1 | AN   | PWM | 16 | NC         |                  |
|   | NC          | 2 | RST  | INT | 15 | <b>INT</b> | Interrupt output |
|   | NC          | 3 | CS   | RX  | 14 | NC         |                  |
|   | NC          | 4 | SCK  | TX  | 13 | NC         |                  |
|   | NC          | 5 | MISO | SCL | 12 | <b>SCL</b> | I2C Clock        |
|   | NC          | 6 | MOSI | SDA | 11 | <b>SDA</b> | I2C Data         |
| Power Supply  | <b>+3V3</b> | 7 | 3.3V | 5V  | 10 | <b>+5V</b> | Power Supply     |
| Ground  | <b>GND</b>  | 8 | GND  | GND | 9  | <b>GND</b> | Ground           |

## Onboard settings and indicators

| Label | Name     | Default | Description   |
|-------|----------|---------|---|
| JP1   | VCC SEL. | Left    | Logic voltage level selection: left position 3V3, right position 5V |
| LD1   | PWR      |         | Power indication LED  |

## Software support

We provide a library for Proximity 6 click on our [Libstock page](#), as well as a demo application (example), developed using MikroElektronika [compilers](#) and [mikroSDK](#). The provided click library is mikroSDK standard compliant. The demo application can run on all the main MikroElektronika [development boards](#).

## Library Description

This library provides generic functions for working with the Click board™.

Key functions:

- uint8\_t proximity6\_writeReg( uint8\_t register\_address, uint16\_t transfer\_data ) - The function writes 16-bit data to the register.
- uint8\_t proximity6\_setMode( uint8\_t selectMode ) - The function puts the device in the desired operating mode.
- void proximity6\_getPosition( uint8\_t \*position ) - The function reads proximity data and checks from which side the object (body) effects on the sensor.
- uint8\_t proximity6\_displayData( uint8\_t \*dataValue, uint8\_t setResolution ) - The function shows proximity data values in determined resolution as the graphics view.

## Examples Description

The application is composed of three sections:

- System Initialization - Initializes peripherals and pins.
- Application Initialization - Sets the registers in a default state and configures the device to work in the proper operating mode (Proximity Mode).
- Application Task - (code snippet) - Example can show the data register values as graphic view in the desired resolution. Also can determine from which side the object (body) effects on the sensor and logs results on USB UART. Results will be shown only when one or more data registers are updated with the new value (sensor detects the

Mikroe produces entire development toolchains for all major microcontroller architectures.

Committed to excellency, we are dedicated to helping engineers bring the project development up to speed and achieve outstanding results.



ISO 27001: 2013 certification of informational security management system.  
ISO 14001: 2015 certification of environmental management system.  
OHSAS 18001: 2008 certification of occupational health and safety management system.



ISO 9001: 2015 certification of quality management system (QMS).

change).

Additional functions:

- void proximity6\_logGraphicRes() - The function logs on USB UART results from the data proximity registers as graphics view.
- void proximity6\_logPositionRes() - The function logs on USB UART the position of the object which affects the sensor.

The full application code, and ready to use projects can be found on our [Libstock page](#).

Other mikroE Libraries used in the example:

- I2C
- UART

## Additional notes and information

Depending on the development board you are using, you may need [USB UART click](#), [USB UART 2 click](#) or [RS232 click](#) to connect to your PC, for development systems with no UART to USB interface available on the board. The terminal available in all MikroElektronika [compilers](#), or any other terminal application of your choice, can be used to read the message.

## mikroSDK

This click board is supported by [mikroSDK](#) - MikroElektronika Software Development Kit. To ensure proper operation of mikroSDK compliant click board demo applications, mikroSDK should be downloaded from the [LibStock](#) and installed for the compiler you are using.

For more information about mikroSDK, visit the [official page](#).

## Resources

[mikroBUS™](#)

[mikroSDK](#)

[Click board™ Catalog](#)

[Click Boards™](#)

## Downloads

[Proximity 6 click example on Libstock](#)

[Proximity 6 click 2D and 3D files](#)

[Proximity 6 click schematic](#)

[ADUX1020 datasheet](#)

Mikroe produces entire development toolchains for all major microcontroller architectures.

Committed to excellency, we are dedicated to helping engineers bring the project development up to speed and achieve outstanding results.



ISO 27001: 2013 certification of informational security management system.  
ISO 14001: 2015 certification of environmental management system.  
OHSAS 18001: 2008 certification of occupational health and safety management system.



ISO 9001: 2015 certification of quality management system (QMS).