



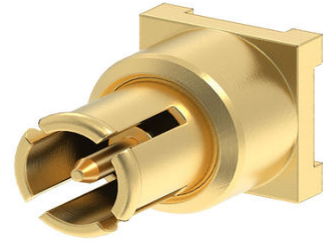
Part Number : [734136610](#)

Product Description : SSMCX Plug, Straight, PCB Receptacle, Surface Mount, Tray, 50 Ohms

Series Number : 73413

Status : Active

Product Category : RF / Coaxial Connectors




Documents and Resources

Drawings

[734136610_sd.pdf](#)

Product Environment Compliance

Compliance

GADSL/IMDS	Not Relevant
China RoHS	 per SJ/T 11365-2006
EU ELV	Not Relevant
Low-Halogen Status	Low-Halogen per IEC 61249-2-21
REACH SVHC	Contains Lead per D(2022)4187-DC (10 June 2022)
EU RoHS	Compliant with Exemption 6(c) per EU 2015/863

Compliance Statements

- EU RoHS
- REACH SVHC
- Low-Halogen

Industry Documents

- IPC 1752A Class C
- IPC 1752A Class D
- Molex Product Compliance Declaration
- IEC-62474
- chemSHERPA (xml)

Substances of Interest

- PFAS

Part Details

General

Status	Active
Category	RF / Coaxial Connectors
Series	73413
Description	SSMCX Plug, Straight, PCB Receptacle, Surface Mount, Tray, 50 Ohms
Application	RF
Product Name	SSMCX
Style	PCB
Type	Ultra-microminiature
UPC	191128926393

Electrical

Frequency	6 GHz
Impedance	50Ω
Power / Voltage	VOLTAGE: 170 Vrms@Sea Level

Physical

Cable Attachment	N/A
Gender	Plug
Keying to Mating Part	N/A
Net Weight	0.074/g
Orientation	Straight
Packaging Type	Tray
Panel Mount	No
Panel Mount Method	N/A
PCB Mounting	Surface Mount
PCB Thickness - Recommended	N/A
Reverse Polar	No
Wire/Cable Type	N/A

This document was generated on May 27, 2026