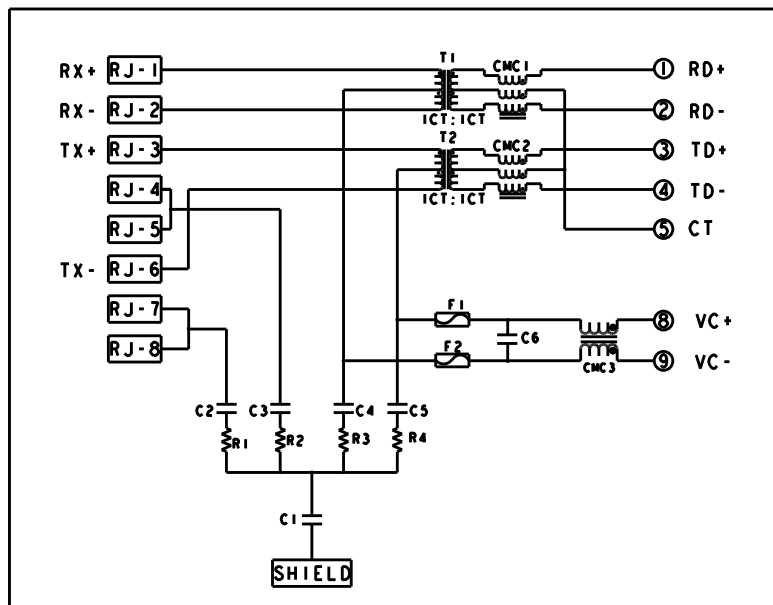


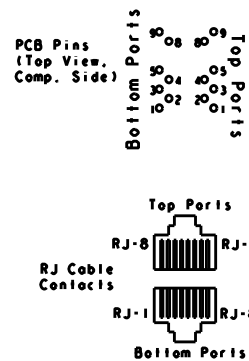
S8V28 10/100 PoE CIRCUIT

Top and Bottom Ports



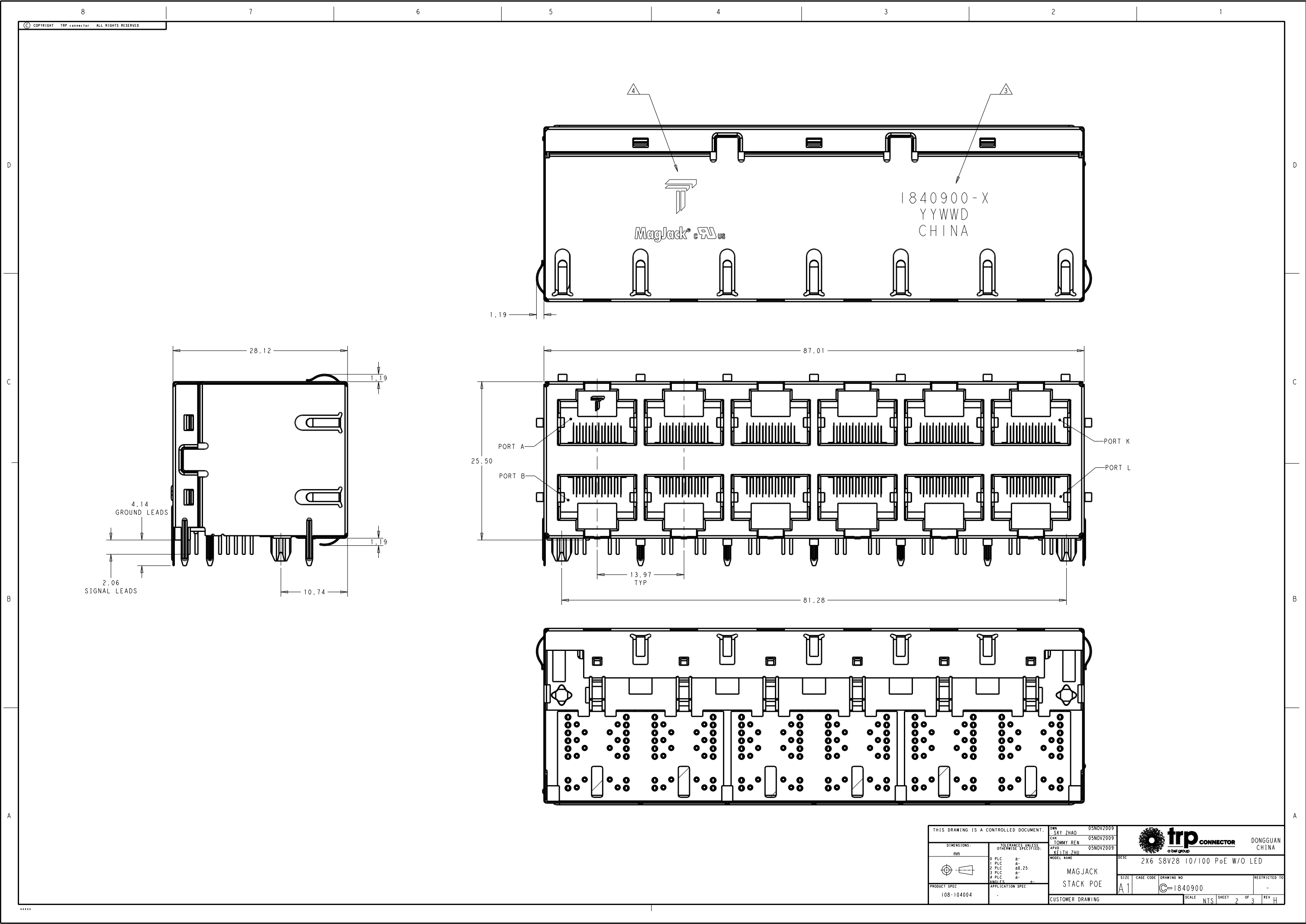
C1 = 1000pF, 2KV, ±10%, X7R DECOUPLING CAP
C2 - C5 = 22nF, 100V, ±10% CAPACITORS
R1-R4 = 75 Ohms, 1/16 W, ±5% RESISTORS
C6 = 0.1uF, 100V
F1-F2=125V, 1A


Pin Designations
(Repeat for each vertical pair of ports.)



- MATERIALS:
PLASTIC HOUSING: BLACK, THERMOPLASTIC FLAMMABILITY RATING UL 94V-0
SHIELD: BRASS, PREPLATED WITH 0.76um MIN SEMI-BRIGHT NICKEL.
POST DIPPED WITH 2.54um MIN SAC SOLDER ON SOLDER TAILS.
CONTACTS: PHOSPHOR BRONZE, 1.27um MIN OVERALL NICKEL
UNDERPLATE WITH SELECT 1.27um MIN GOLD AT MATING INTERFACE
AND 2.54um MIN MATTE TIN ON SOLDER TAILS.
ALL PC BOARDS: HIGH TEMPERATURE PCB, TG>170°C
- MAGNETICS
APPLICATION: 10/100 BASE-T, PoE
IMPEDANCE: 100 OHMS
TURNS RATIO (CHIP:CABLE): TX = 1:1, RX = 1:1
OPEN CIRCUIT INDUCTANCE (OCL): 350uH MIN @100kHz, 0.1VRMS,
8mADC BIAS FROM 0°C TO 70°C, TX AND RX
POE CURRENT: 350mADC MAX
PERFORMANCE @ 25°C:
INSERTION LOSS (IL): 1.1dB MAX FROM 0.5MHz TO 100MHz
RETURN LOSS (RL): 18dB MIN FROM 0.5MHz TO 30MHz
18-20LOG(f/30)dB MIN FROM 30.1MHz TO 60MHz
12dB MIN FROM 60.1MHz TO 80MHz
CROSSTALK ATTENUATION: 35dB MIN FROM 0.5MHz TO 40MHz
33-20LOG(f/50)dB MIN FROM 40.1MHz TO 100MHz
COMMON MODE REJECTION RATIO (CMRR): 30dB MIN FROM 0.5MHz TO 100MHz
ISOLATION VOLTAGE: 2250VDC(MAX) FOR 60 SECONDS WITH A RISE TIME OF
500V/SEC AND WITH ALL PORTS CONNECTED.
- PART NUMBER, DATE CODE AND COUNTRY OF ORIGIN ARE
LOCATED IN APPROXIMATE AREA SHOWN. DATE CODE: YYWW "YY" IS YEAR, "WW"
IS WORK WEEK, "D" IS DAY OF WEEK, WITH SUNDAY=1
- TRP LOGO AND AGENCY APPROVAL LOGO ARE
LOCATED IN APPROXIMATE AREA SHOWN.
- OPERATING TEMP: FROM 0°C TO +70°C.
- RJ45 CAVITY CONFORMS TO FCC RULES AND REGULATION PART 68 SUBPART F.
- INDICATED MAGNETIC CONNECTIONS ARE SYMMETRICAL AND
SUPPORT AUTO-MDI/MDIX.
- DATUM AND BASIC DIMENSION ESTABLISHED BY CUSTOMER.
- BASIC DIMENSION ESTABLISHED BY CUSTOMER, BUT MAY NOT BE
GREATER THAN 5.08mm.
- THE PARTS ARE RECOMMENDED FOR WAVE SOLDERING PROCESS,
PEAK TEMPERATURE 260°C MAX, 10 SECONDS MAX.

THIS DRAWING IS A CONTROLLED DOCUMENT.		OWN SKY ZHAO 05NOV2009	1840900-1	
DIMENSIONS: mm		CHK TOMMY REN 05NOV2009	PART NUMBER	
TOLERANCES UNLESS OTHERWISE SPECIFIED:		APVD KELTH ZHU 05NOV2009		
0 PLC ±		MODEL NAME	DESC	
1 PLC ±		MAGJACK	2X6 S8V28 10/100 PoE W/O LED	
2 PLC ±0.25		STACK POE		
3 PLC ±		SIZE	CAGE CODE	DRAWING NO
4 PLC ±		A1		1840900
ANGLES		CUSTOMER DRAWING	SCALE	NTS
PRODUCT SPEC 108-104004		APPLICATION SPEC	SHEET 1 OF 3	REV H



THIS DRAWING IS A CONTROLLED DOCUMENT.				OWN SKY ZHAO	05NOV2009	 trp CONNECTOR a bel group		DONGGUAN CHINA	
DIMENSIONS:		TOLERANCES UNLESS OTHERWISE SPECIFIED:		CHK TOMMY REN	05NOV2009				
mm				APVD KEITH ZHU	05NOV2009				
PRODUCT SPEC		APPLICATION SPEC		MODEL NAME		DESC		SIZE	
108-104004				MAGJACK STACK POE		2X6 S8V28 10/100 PoE W/O LED		DRAWING NO	
				CUSTOMER DRAWING		SCALE		RESTRICTED TO	
						A1		C=1840900	
						NTS		SHEET 2 OF 3	
								REV H	

