

LUMOTAST 16, emergency stop button, 2 NC, Gold, Flat quick-connect terminal 2.8 x 0.5 tin-plated, reset by rotating, arrows red



Description

The LUMOTAST 16 emergency stop elements are equipped with up to 3 contacts. This means that, for example, 2 redundant contacts can be earmarked for safety applications, while a signaling contact triggers the position sensing. An additional safety factor for your application.

technical data

> general		direct links
Color of mushroom	red	> RAFI eCatalog
Legending color	red	
Collar color	yellow	
Collar shape	round	
Operating temperature, min.	-25 °C	
Operating temperature, max.	70 °C	
Storage temperature, min.	-40 °C	
Storage temperature, max.	80 °C	
illuminated	No	
Packaging	Box	
Packaging unit	10 pcs.	
net weight	13.5 g	
Operating life	30,000 cycles	
B10	50,000 cycles	
B10d	100,000 cycles	
Degree of protection, front side, according to DIN EN 60529	IP65 IP67	
UL Enclosure Type Rating front side	type 1	
Environment resistance	IEC 60068-2-27 IEC 60068-2-30	
Impact resistance IK	05 side 05 frontal	
Minimum order quantity (MOQ)	10 pcs.	
Pollution degree acc. to DIN EN 61010-1	Pollution degree 2	
RoHS compliant	Yes	
REACH compliant	Yes	
country of origin	HU	
> mounting diameters		
Outside dimension, length	29.6 mm	

Outside dimension, width	29.6 mm
Outside dimension, height	40.6 mm
Mounting hole	16.2 mm
Mounting depth	18 mm
Installation height	22.6 mm

> mechanical data

Actuation function	latching
Contact function	2 NC
Contact material	Gold
Resetting	by rotating
Fixing	Threaded ring
Solderability	Yes
Threaded ring torque, max.	0.8 Nm
Terminal on the rear	Flat quick-connect terminal 2.8 x 0.5 tin-plated

> electrical data

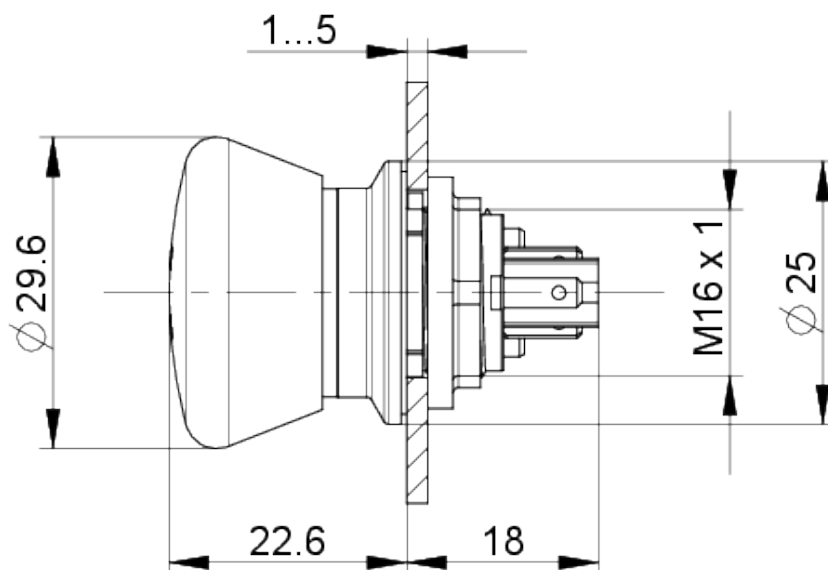
Rated insulation voltage	250 V
Rated voltage, min.	0.02 V
Rated voltage, max.	30 V
Rated voltage, max.	35 V DC / 100 mA
Voltage type	AC / DC
Rated operating voltage	0.02-30 V
Rated current, min.	0.001 A
Rated current, max.	0.1 A
Categories of use	AC-15 DC-13

> Specifications according to UL 60947

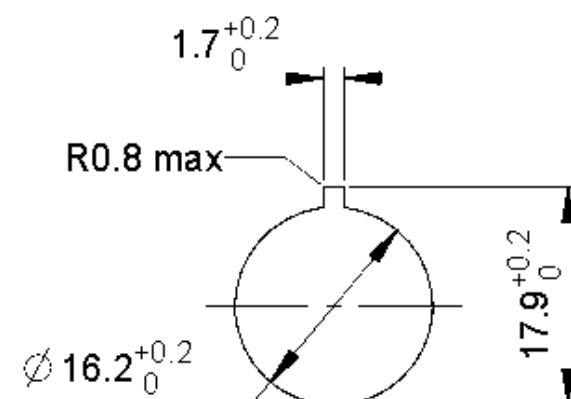
Rated voltage, max.	35 V DC / 100 mA
UL Enclosure Type Rating front side	type 1

drawings

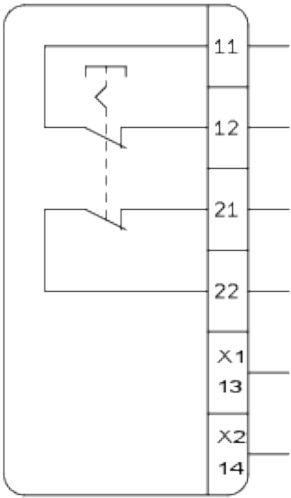
Dimensioned drawing



Mounting hole drawing



Schematic diagram



Betriebsanleitung Not-Halt-Befehlsgeräte (Original)

Operating Instructions EMERGENCY STOP
Control Units (Translation of the source text)

**Mode d'emploi auxiliaires de commande
d'ARRÊT D'URGENCE (Traduction original)**

- (GB) 1. Safety instructions**

- (F) 1. Consignes de sécurité**

- D 2. Allgemeine Beschreibung und bestimmungsgemäße Verwendung**

(GB) 2. General description and intended use

- EN ISO 13849-1:2015
- EN ISO 13850:2015
- EN ISO 13849-2:2012
- EN 60204-1/A1:2009

- EN ISO 13849-1:2015
- EN ISO 13850:2015
- EN ISO 13849-2:2012
- EN 60204-1/A1:2009

3. Produktbeschreibung

leuchtet, transparent, keine Not-Halt Funktion.

(GB) 3. Product description

(F) 3. Description de produit

"Aktiv/Inaktiv"-Varianten: "Aktiv": lit rouge, d'arrêt d'urgence fonction donné; "Inaktiv": pas lit, transparent, pas de d'arrêt d'urgence fonction.

Produkt Product Produit	Einbau Ø mm Mounting Ø mm Montage Ø mm	Betätiger Actuator Actionneur	Schaltelement Contact block Élément de commutation
LUMOTAST 16	Ø 16,2	1.15.213.001/0000	integriert / incl.
		1.15.213.002/0000	
		1.15.213.104/0000	
		1.15.213.003/0000	
		1.15.213.301/0000	
		1.15.213.004/0000	
		1.15.213.302/0000	
		1.15.213.011/0000	
		1.15.213.303/0000	
		1.15.213.012/0000	
		1.15.213.304/0000	
		1.15.213.013/0000	
		1.15.213.311/0000	
		1.15.213.014/0000	
		1.15.213.312/0000	
LUMOTAST 22	Ø 22,3	1.15.213.051/0000	integriert / incl.
		1.15.213.313/0000	
		1.15.213.052/0000	
		1.15.213.314/0000	
		1.15.213.053/0000	
		1.15.213.401/0000	
		1.15.213.054/0000	
		1.15.213.402/0000	
		1.15.213.061/0000	
		1.15.213.403/0000	
		1.15.213.062/0000	
		1.15.213.404/0000	
		1.15.213.063/0000	
		1.15.213.411/0000	
		1.15.213.064/0000	
LUMOTAST 25	Ø 16,2	1.15.213.412/0000	integriert / incl.
		1.15.213.101/0000	
		1.15.213.413/0000	
		1.15.213.102/0000	
		1.15.213.414/0000	
LUMOTAST 22	Ø 22,3	1.15.105.002/0000	integriert / incl.
		1.15.105.012/0000	
		1.15.105.022/0000	
LUMOTAST 25	Ø 16,2	1.15.154.006/0301	integriert / incl.
		1.15.154.016/0301	
RAMO 22	Ø 22,3	1.10.031.001/0000	integriert / incl.
		1.10.031.004/0330	
		1.10.031.022/0330	
		1.10.031.101/0000	
RAMO 30	Ø 30,3	1.11.031.001/0000	integriert / incl.
		1.11.031.004/0330	
		1.11.031.022/0330	
		1.11.031.101/0000	

Tabelle 3.1 Weitere technische Daten sind dem Katalog zu entnehmen.

Table 3.1 For additional technical data, please refer to the catalogue.

Tableau 3.1 Pour les autres caractéristiques techniques, voir catalogue.