

Data Sheet

LL04CR-CXRxxL52

CREE 
 ▶ LED Solution Provider



■ Features & Typical Applications

- High efficiency
- Available with 3 beam angles
- Optimized Uniformity
- Lens without Holder
- Architectural Lighting
- Commercial Lighting

■ Table of Contents

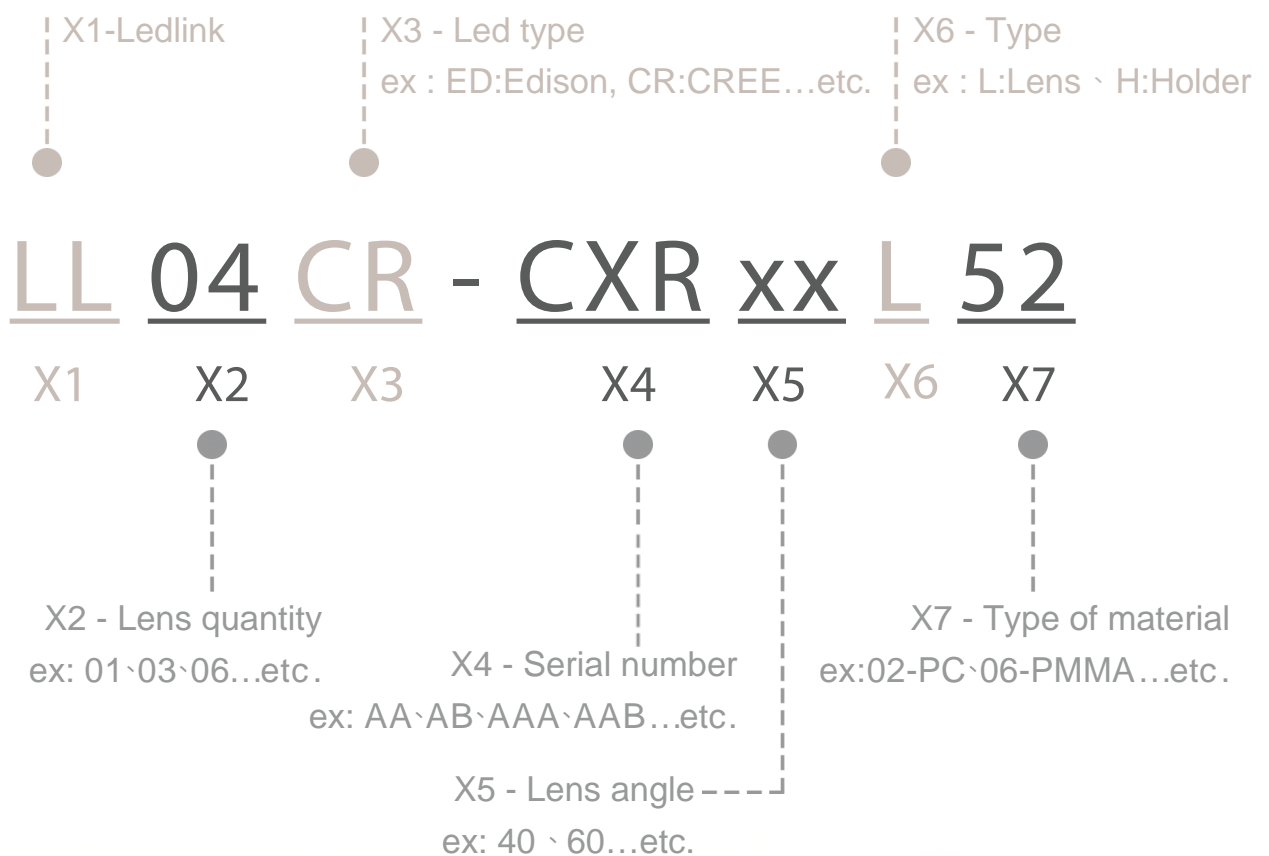
General Information & Product Nomenclature.....	P.2
Optical Specifications	P.3
Mechanical Specifications	P.4
Package Specifications.....	P.5

LL04CR-CXRxxL52

General Information

- Lens Material : PC LUX2180T
- Operating Temperature range -40°C~+110°C(upper limit +120°C)
- Storage Temperature range -40°C~+110°C(upper limit +120°C)
 - * Average transmittance in visible spectrum 400nm~700nm>90%
- Usage and Maintenance:
 1. If necessary, clean lenses with mild soap, water and soft cloth.
 2. Never use any commercial cleaning solvents on lenses, like alcohol.
 3. Please handle or install lenses with wearing gloves, skin oils may damage lens or its optical characteristic.

Product Nomenclature



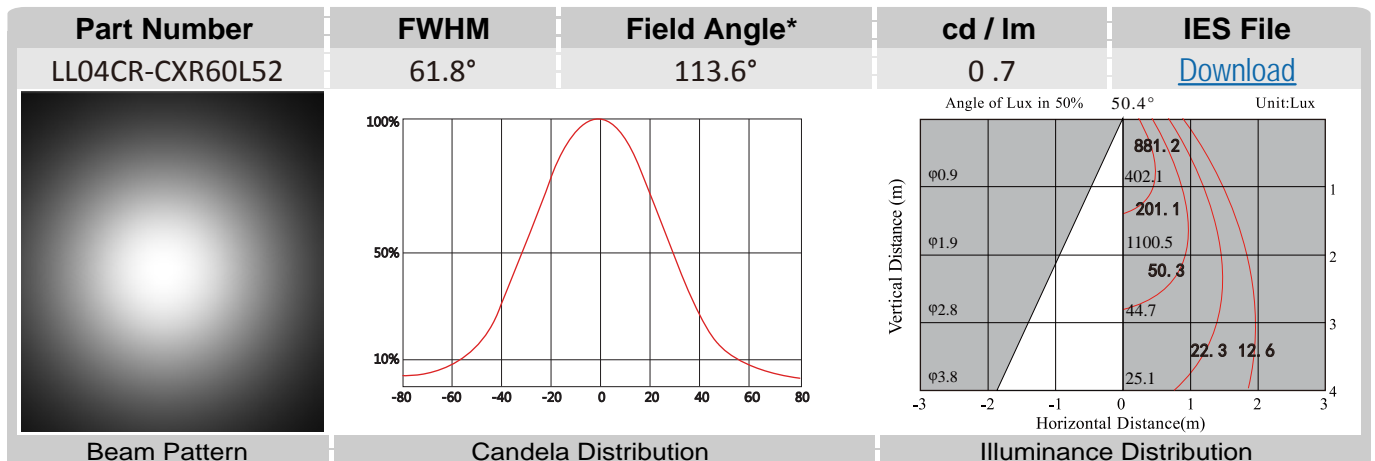
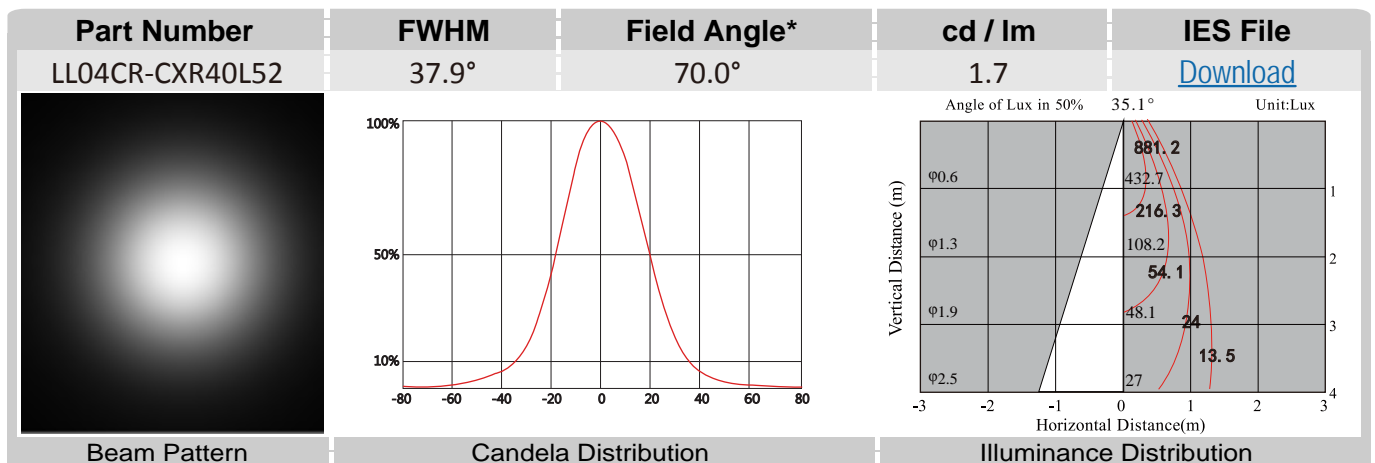
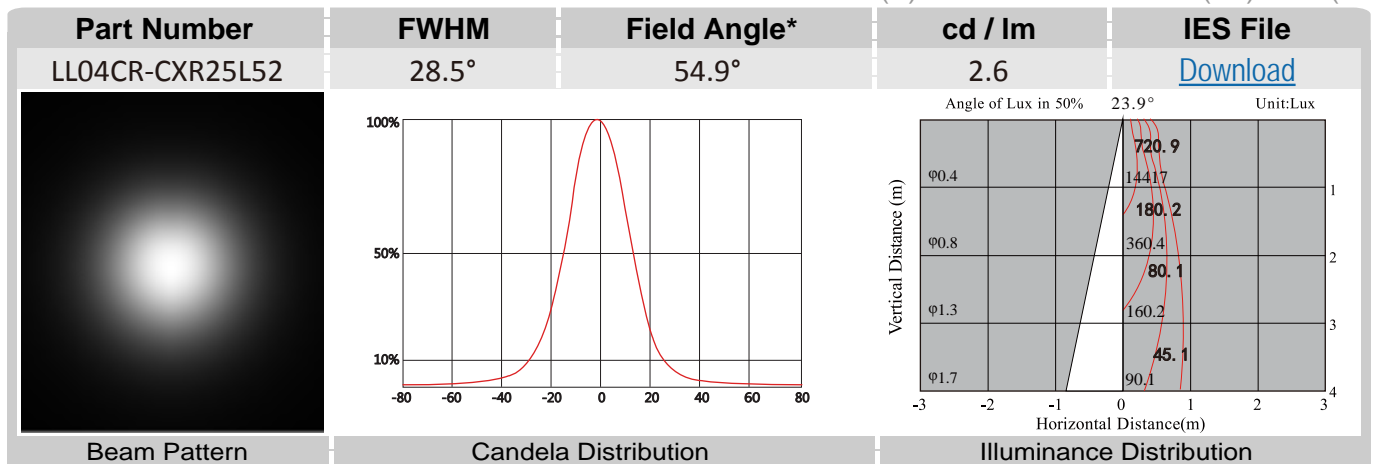
LL04CR-CXRxxL52

Optical Specifications

CREE 
 LED Solution Provider



Note: (1) All the results of analysis are based on 0 degrees of elevation.
 (2) Tolerance: $\pm 10\%$.
 (3) Led Luminous Flux(lm): 252($\pm 5\%$).



*The Field Angle is the angle between the two directions opposed to each other over the beam axis for which the luminous intensity is 10% that of the maximum luminous intensity.
 *This testing result is obtained through testing the popular rank LED samples which provided by the original manufacturer. Hence, the testing results would be varied as the users choose same LED model but different rank.

LL04CR-CXRxxL52

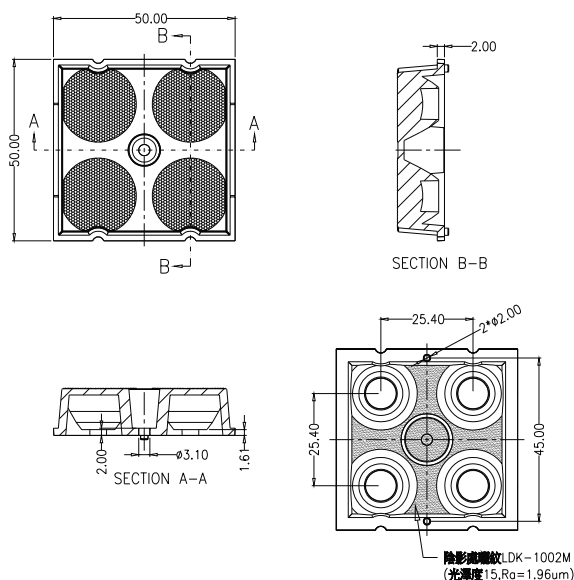
Mechanical Specification

1. Fixing method

☒ Glue
 ☒ Screw
 ☐ Tape
 ☐ Fixing-ring
 ☒ Frame

*Screw : The Maximum tightening torque for centre screw is 0.6Nm, which is mainly screw in for assembly.

2. Lens dimension

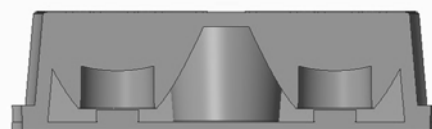


4. Holder dimension

3. Assembly instruction



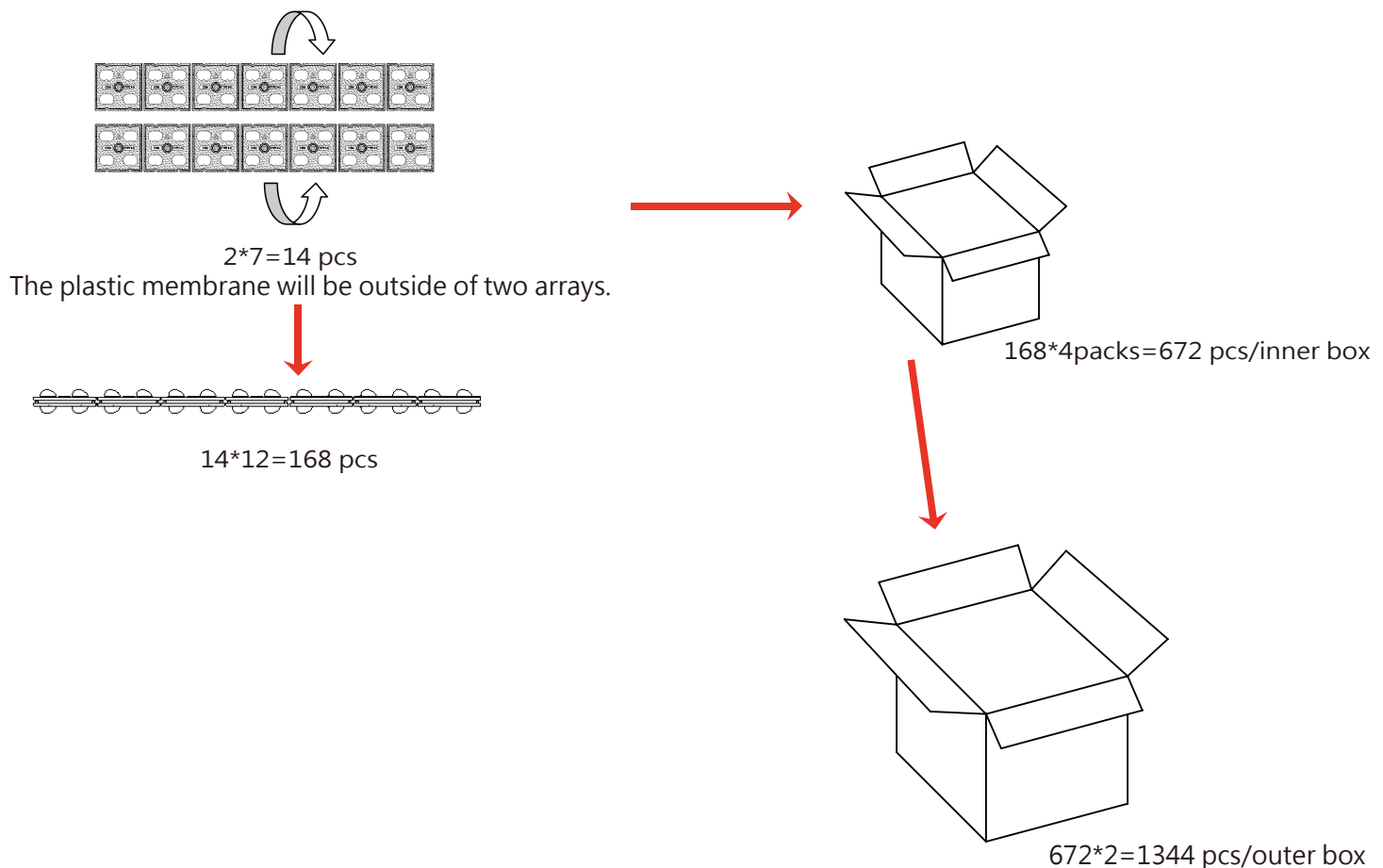
5. View assembly lens with LED:



LL04CR-CXRxxL52

Package Specifications

Item	Quantity	Total	Size(L*W*H)	G.W
Plastic membrane	14 pcs	14 pcs		
Inner box	168*4pcs /outer box	672 pcs	40*37*21 cm	6.6g
Outer box	672pcs*2 /outer box	1344 pcs	42*39*46 cm	



Note: