

### Micro Battery

#### MS Lithium Rechargeable Battery

- [MS421R \(Reflowable\)](#)
- [MS621R \(Reflowable\)](#)
- [MS414GE](#)
- [MS412FE](#)
- [MS518SE](#)
- [MS614SE](#)
- [MS621FE](#)
- [MS920SE](#)
- [MS621T \(Wide temperature range\)](#)
- [MS920T \(Wide temperature range\)](#)

#### TS Lithium Rechargeable Battery

- [TS621E](#)
- [TS920E](#)

#### ML Lithium Rechargeable Battery

- [ML414H](#)

#### Chip type Electric Double Layer Capacitor

- [CPH3225A](#)
- [CPX3225A752D](#)
- [CPM3225A](#)

#### Silver Oxide Battery

- [SEIZAIKEN](#)
- [Cross reference chart](#)
- [SEIZAIKEN's new usage except watches](#)

#### Silver Oxide Battery Expiration Guide

#### For Your Safety

#### Micro battery's new challenge for medical devices

#### Support

#### Global Network

#### Contact Us

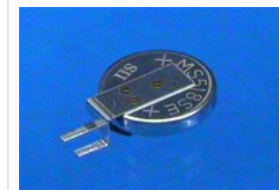


#### Sitemap

## MS Lithium Rechargeable Battery MS518SE

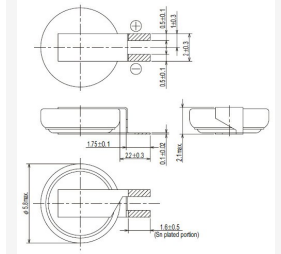
### SPECIFICATIONS

Type	MS518SE
Nominal Voltage(V)	3
Charge Voltage (Standard Charge Voltage)(V)	2.8 to 3.3(3.1)
Nominal Capacity(mAh)	3.4
Internal Impedance(Ω)	90
Standard Discharge Current(mA)	0.010
Maximum Discharge Current (Continuous)(mA)	0.15
Cycle Life (Time)100% D.O.D(Depth of Discharge)	100
Cycle Life (Time)20% D.O.D(Depth of Discharge)	1000
Size Diameter(mm)	5.8
Size Height(mm)	1.8
Weight(g)	0.13



MS518SE FL35E

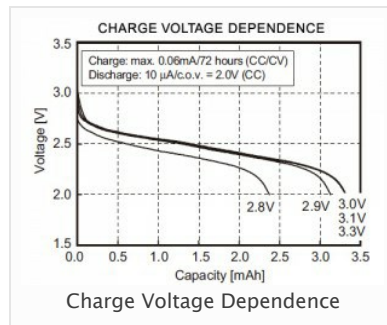
### Terminals


[Click to enlarge](#)

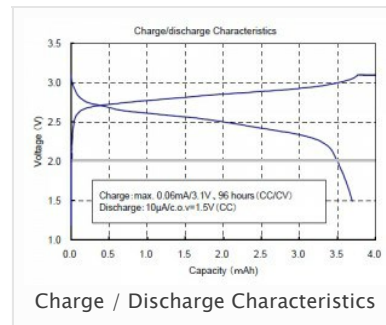
MS518SE is not reflowable. Please mount them on PCB by hand soldering.

### CHARACTERISTICS

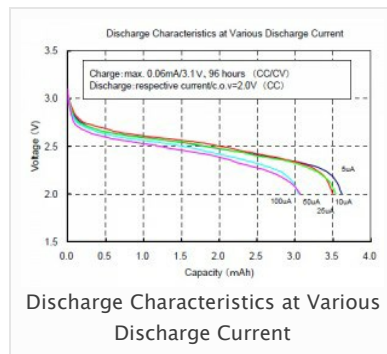
[Click to enlarge.](#)



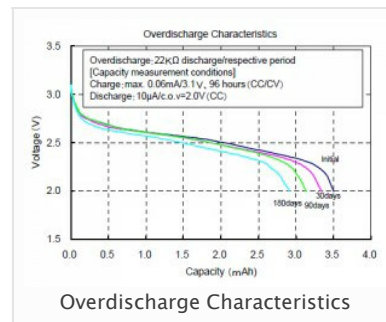
Charge Voltage Dependence



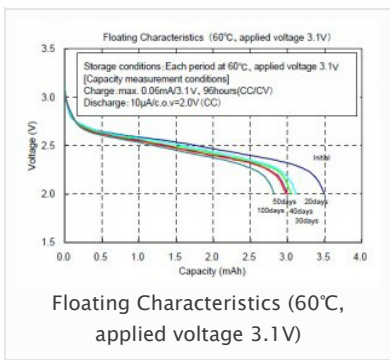
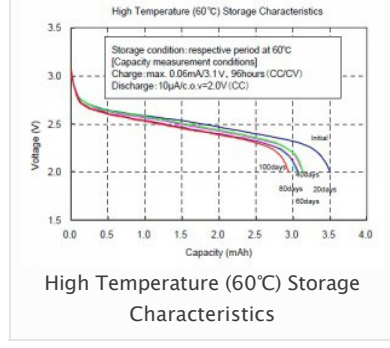
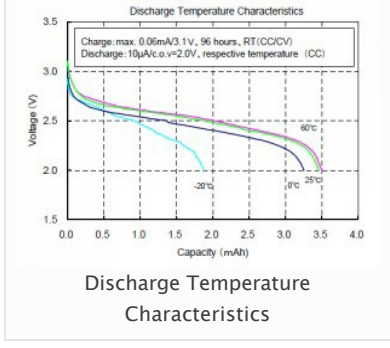
Charge / Discharge Characteristics



Discharge Characteristics at Various Discharge Current



Overdischarge Characteristics



Please contact us for more details.

[Inquiry Form](#)