

Signal lamp with integrated LED, 10 mm, round bezel, 24-28 V, 28 Volt, bezel green, Flat quick-connect terminal 2.8 x 0.8 tin-plated



Description

Signal lamps with integrated LED, mounting hole diameter 10 mm

technical data

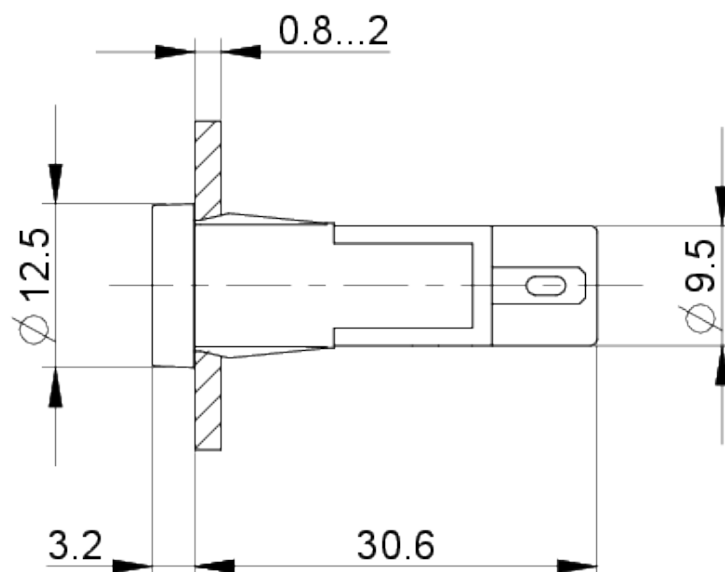
> general		direct links
Bezel color	green	> RAFI eCatalog
Property of bezel / mushroom	transparent	
Bezel shape	round	
illuminated	Yes	
Packaging unit	10 pcs.	
net weight	2.4 g	
Degree of protection, front side, according to DIN EN 60529	IP40	
Minimum order quantity (MOQ)	50 pcs.	
RoHS compliant	Yes	
REACH compliant	Yes	
country of origin	HU	
> mounting diameters		
Outside dimension, length	12.5 mm	
Outside dimension, width	12.5 mm	
Outside dimension, height	33.7 mm	
Mounting hole	10 mm	
Mounting depth	30.5 mm	
Installation height	3.2 mm	
Collar dimension	12.5 mm	
> mechanical data		
Fixing	Pushing into mounting hole	
Solderability	Yes	
Terminal on the rear	Flat quick-connect terminal 2.8 x 0.8 tin-plated	

> electrical data

Operating voltage of the luminous element, min.	24 V
Operating voltage of the luminous element, max.	28 V
Protective diode	Yes

drawings

Dimensioned drawing



Mounting hole drawing

