



Copyright FCI.

A

B

C

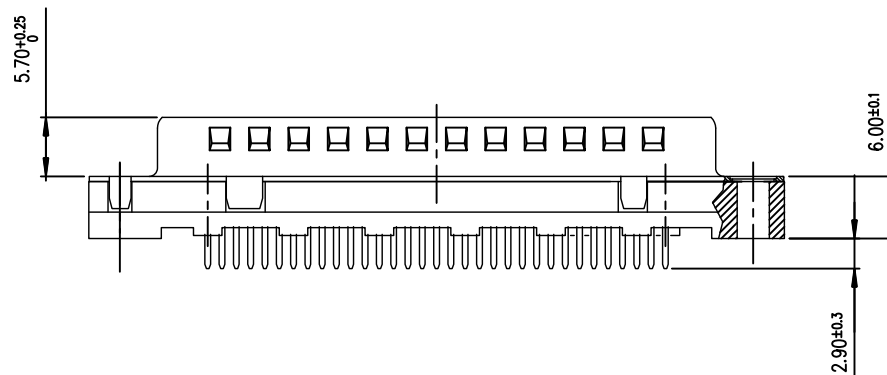
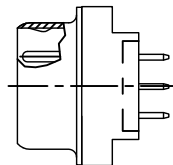
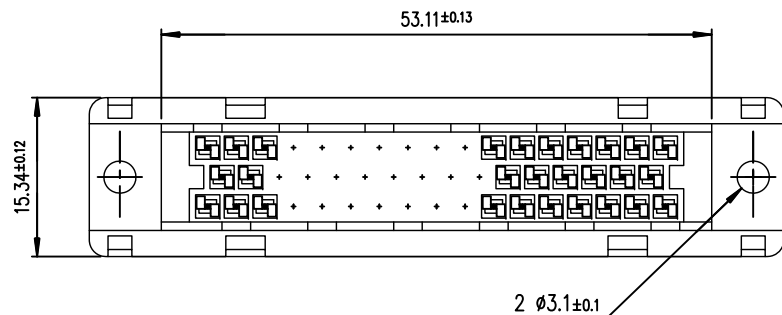
D

A

B

C

D



REQUIREMENTS

Technical characteristics:

Shell: steel tin plated
Insulators: self-extinguishing thermoplastic, UL class 94V0
Contacts size 20: phosphor bronze, gold on mating end, bright tin lead on termination end and over nickel on entire contact
Cycles: >500 for plating 6
>200 for plating 4
gauge retention force: 0.20N mini

Electrical characteristics:

max. current rating: 5A
Test voltage: 1000V
Rated voltage: 300V
Contact resistance: ≤10mΩ
Shell resistance: ≤5mΩ
Insulation resistance: ≥5000MΩ

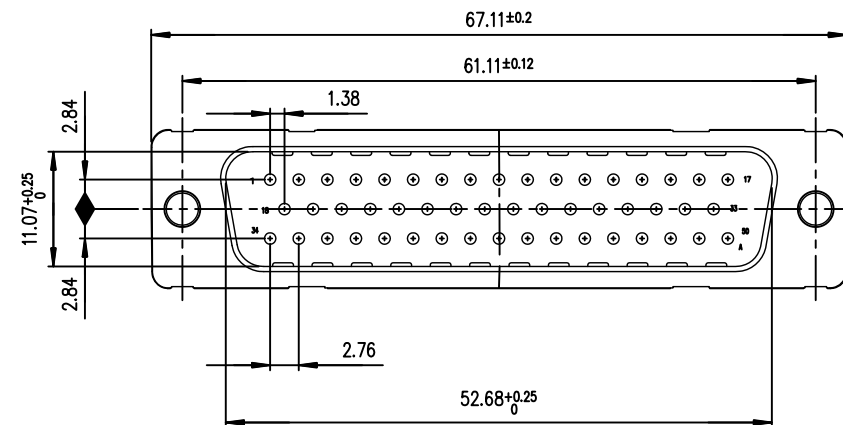
Climatic characteristics:

Operating temperature range: -55° +125°

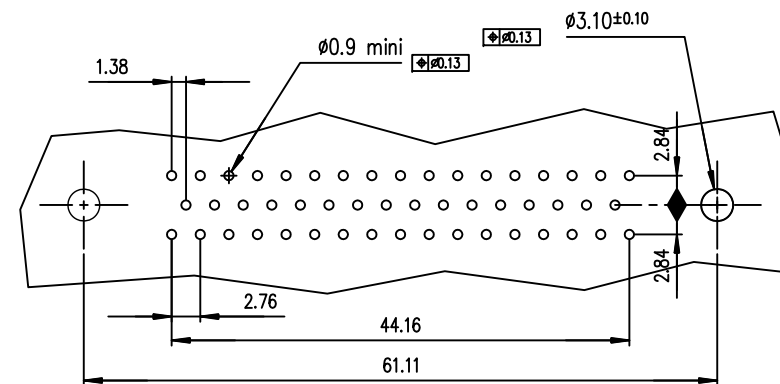
Dimensions:

In accordance with MIL-C-24308C and DIN41652

PLATING 4 = FLASH AU
PLATING 6 = 0.76 µ AU

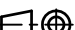




PC card drilling dimensions
(after plating - thickness: 1.60 mm)



Part number
D50P24A*PA00

European Views

www.fciconnect.com			surface ISO 1302		✓	tolerance std ISO 406 ISO 1101		projection 		mm 	
			TOLERANCES UNLESS OTHERWISE SPECIFIED								
Dr	LENOIR	1996/04/24	ANGULAR	LINEAR	0.X	±0.1	size	A3	Scale	2	
Eng	LENOIR	1996/04/24			0.XX	±0.1					
Chr	M PESSON	1996/04/24	0.XX ±2		0.XXX	±0.1	ECN	LS06-0208			
Appr	M PESSON	1996/04/24	Product family			D-SUB	Spec ref -				
		title MALE CONNECTOR DELTA D 50, STD EUROPE straight-solder type					dwg no C01-8646-0252		Rev. C		
		catalog no		-		CUSTOMER		sheet 1 of 1			

rev	ecn no	dr	date
B	-	MLE	1995/05/09
C	LS06-0208	LGO	2006/12/12
-	-	-	-
-	-	-	-
-	-	-	-
-	-	-	-

REV F - 2006-04-17

PDS: Rev :C

STATUS:Released

Printed: Oct 02, 2014