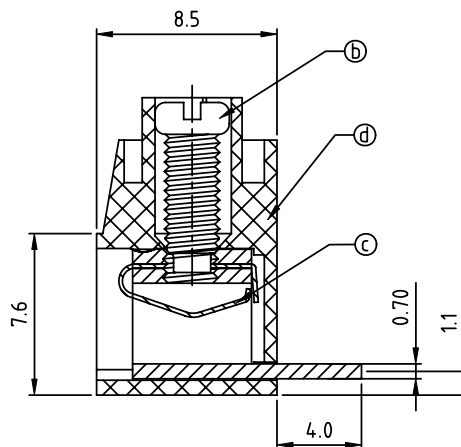
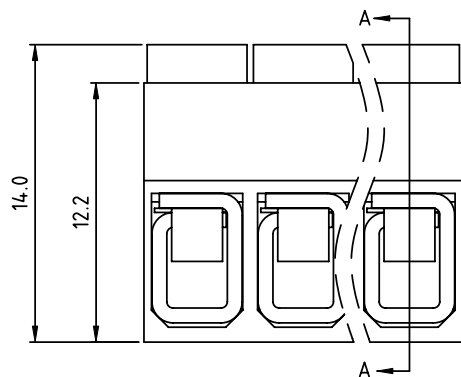
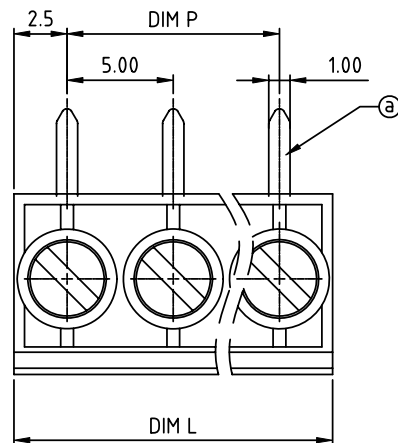
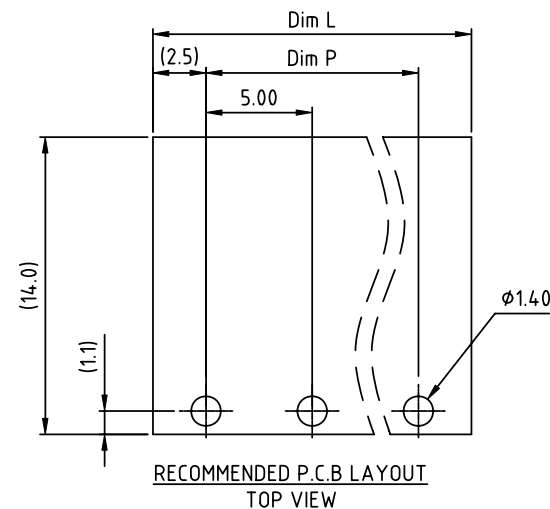


PRODUCT NUMBER	PITCH
TLxx05x000J0G	5.00 mm




SECTION A-A



Material

- Item ① Terminal body: Brass stamping, Tin plated
- Item ② Terminal screw: Steel Zinc plating "-" slot type
- Item ③ Wire guard: PhBz, Tin plated
- Item ④ Terminal (housing): Thermoplastic (UL94V-0)

Electrical cULus

- Voltage rating: 250VAC
- Current rating: 15A
- Wire range:
 - Solid wire(AWG): 12-22
 - Stranded wire(AWG): 12-22
- Torque(Lb-In): 3.5
- Screw: M2.5
- Wire strip length: 6-7mm
- Withstanding Voltage: 1.6KV
- Operating temperature: -40°C to +115°C
- Soldering temperature: 260°C±5°C/5 Sec
- Safety Approval: 

N = Number of poles
 Dim L = N x 5.0
 Dim P = (N-1) x 5.0

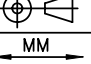
Poles	Dim L	Dim P
2-6p	±0.15	±0.10
7-12p	±0.20	±0.20
13-18p	±0.30	±0.25
19-24p	±0.40	±0.30

PART NO.: TL xx 05 x 0 00J0 G

Solid Block
 No. of poles
 02 2 poles
 03 3 poles
 ...
 24 24 poles

Body Color
 0 Black (RAL9005)
 2 Red (RAL3001/D)
 3 Orange(RAL2011/P)
 4 Yellow(RAL1018/A)
 5 Green(RAL6018/T)
 6 Blue (RAL5015/A)
 8 Grey(RAL7035/D)
 9 White(RAL1102)
 C Green(RAL6018/U)

RoHS compliant
 (lead<4%)
 In copper Alloy

mat'l. code				surface ASME Y14.5	tolerance ASME Y14.5	projection	product family			
ltr	ecn	no	dr	date	tolerances unless otherwise specified		TERMINAL BLOCK			
					angles	MM	title			
					parallel		TERMINAL BLOCK			
					X*±1°	scale	WIRE PROTECTOR, 90D WIRE INLET			
					dr		dwg no			
					enr		sheet 1 of 1 size			
					chr		TLxx05x000J0G			
					appd		type			
sheet index	revision	A					CUSTOMER Drawing			
	sheet	1								