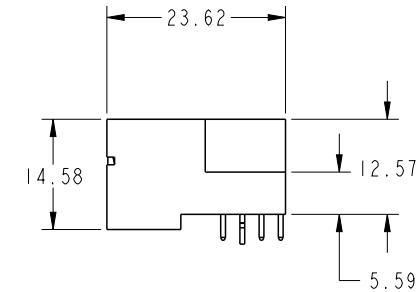
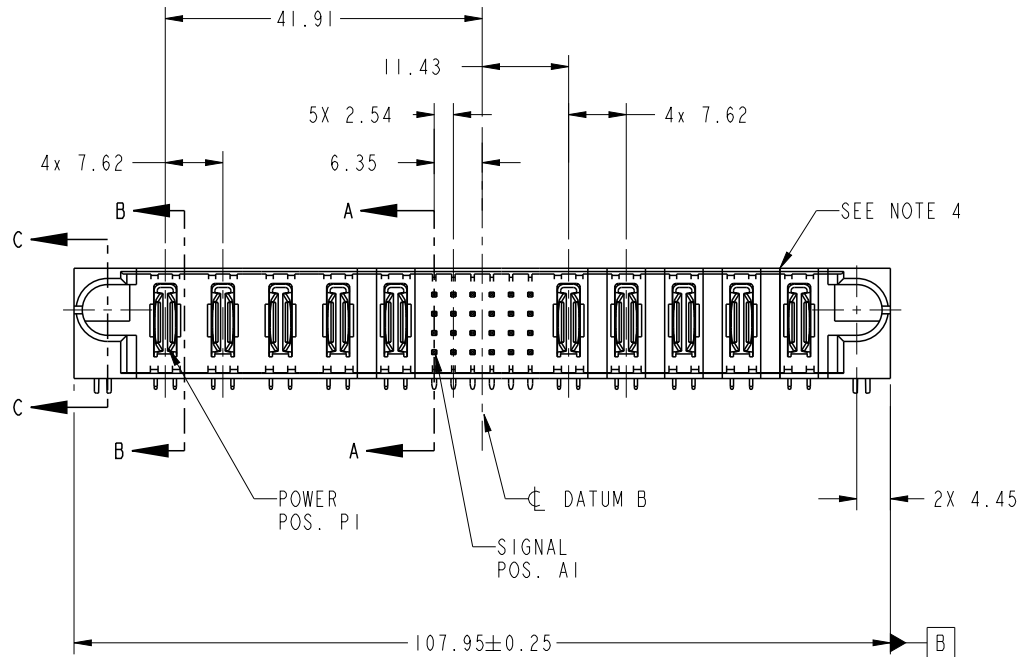

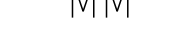



PRODUCT NO.	ROWS		POWER					SIGNAL						POWER					
		E1	P1	P2	P3	P4	P5	1	2	3	4	5	6	P6	P7	P8	P9	P10	E2
51939-669-- NOTE 3	D C B A																		

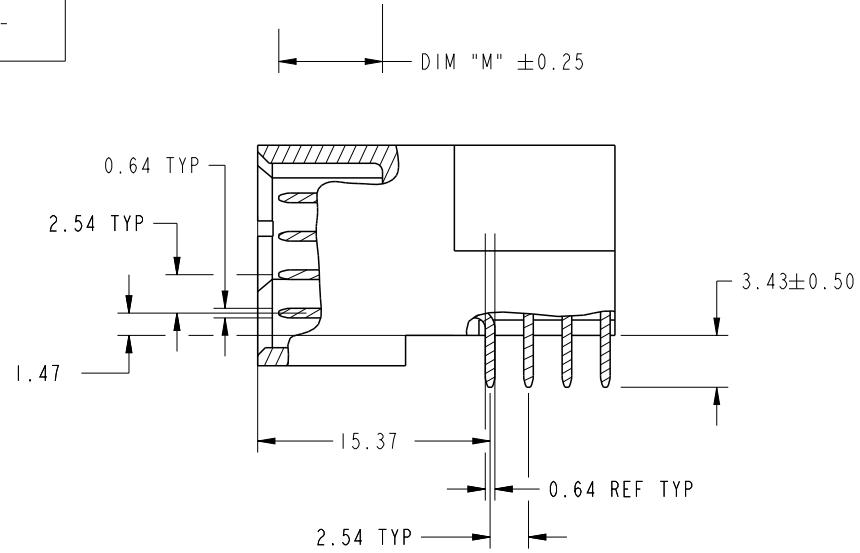
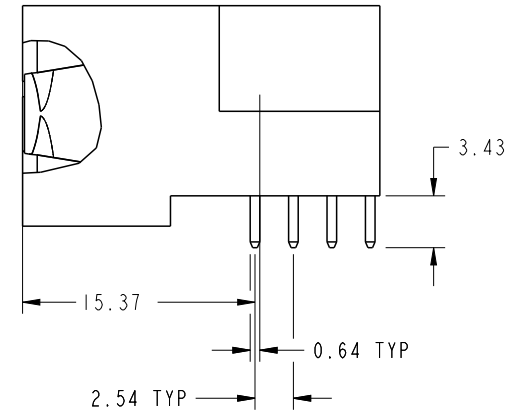
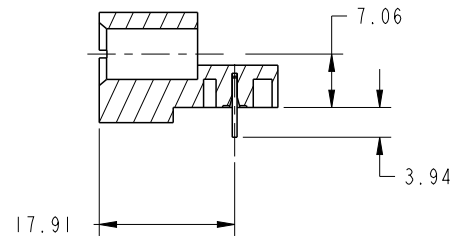


CODE	DIM "M" MATING LENGTH	CONTACT TYPE
U	[6.86]	SIGNAL
T	[6.86]	SIGNAL
S	[6.86]	SIGNAL
R	[6.86]	SIGNAL
PA	[N/A]	POWER
HA	[N/A]	HOLD-DOWN

spec ref		*		dr	Shi Guang	2012/04/24	projection 		size	A4	scale	1:1
tolerance std SEE NOTE	TOLERANCES UNLESS OTHERWISE SPECIFIED			eng	Ruan MT	2016/06/01			ecn no	-		
				chr	Fancy Zhang	2016/05/31			rel level Released			
				appr	Pei-Ming Zheng	2016/06/01						product family PwrBlade
surface 	linear	0.X	±0.5	Amphenol FCI	title 5ACP + 24S + 5ACP RIGHT ANGLE SOLDER HEADER			dwg no 51939-669	rev A			
		0.XX	±0.25									
		0.XXX	±0.1									
		angular	0°	±2°		cat. no. -			Product - Customer Drw			sheet 1 of 4

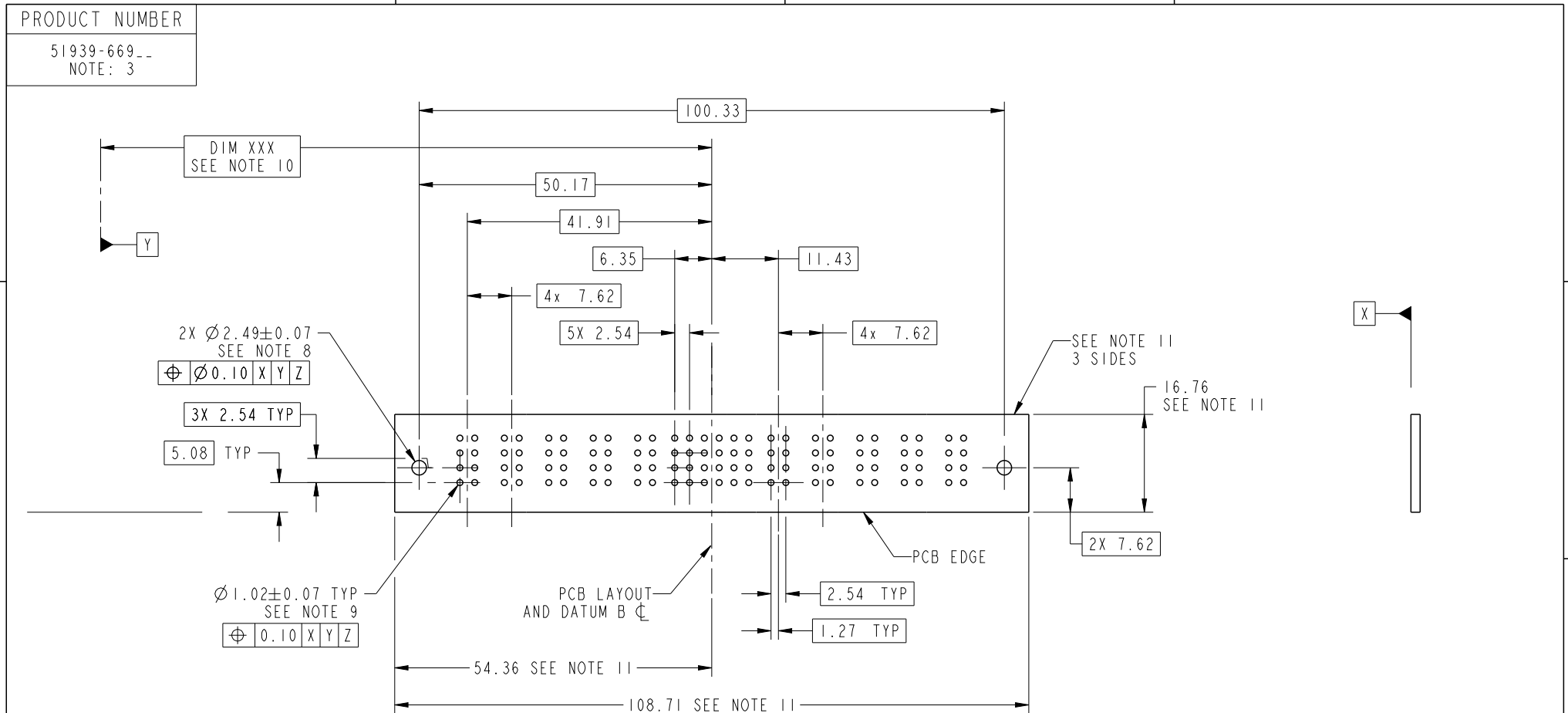
Crea File -- REV E -- 2016-02-12

PRODUCT NUMBER

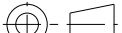

51939-669--
NOTE: 3BROKEN-OUT SECTION A-A
SCALE 2:1BROKEN-OUT SECTION B-B
SCALE 2:1

SECTION C-C

spec ref		*		dr		Shi Guang		2012/04/24		projection		MM		size		A4		scale		1:1							
tolerance std		TOLERANCES UNLESS OTHERWISE SPECIFIED				eng		Ruan MT		2016/06/01						ecn no -											
SEE NOTE						chr		Fancy Zhang		2016/05/31																	
						appr		Pei-Ming Zheng		2016/06/01																	
										product family				PwrBlade				rel level Released									
surface		linear		0.X		±0.5		Amphenol FCI		title		5ACP + 24S + 5ACP				dwg no		51939-669				rev		A			
				0.XX		±0.25																					
				0.XXX		±0.1																					
				angular		0°		±2°						cat. no.				-				Product - Customer Drw				sheet 2 of 4	



RECOMMENDED PCB LAYOUT

spec ref		*		dr	Shi Guang	2012/04/24	projection 	MM 	size	A4	scale	1:1
tolerance std SEE NOTE	TOLERANCES UNLESS OTHERWISE SPECIFIED			eng	Ruan MT	2016/06/01			ecn no	-		
				chr	Fancy Zhang	2016/05/31			rel level Released			
				appr	Pei-Ming Zheng	2016/06/01						
surface ✓	linear	0.X	±0.5	Amphenol FCi	title 5ACP + 24S + 5ACP RIGHT ANGLE SOLDER HEADER			dwg no	51939-669		rev A	
		0.XX	±0.25									
		0.XXX	±0.1									
	angular	0°	±2°		cat. no.		-	Product - Customer Drw		sheet 3 of 4		

Crea File - REV E - 2016-02-12

PRODUCT NUMBER
51939-669-- NOTE: 3

NOTES:

1. DIMENSIONS AND TOLERANCES ARE IN ACCORDANCE WITH
ASME Y14.5M, 1994 UNLESS OTHERWISE SPECIFIED.

CONNECTOR NOTES:

2. HOUSING MATERIAL: UL 94 V-0 GLASS FILLED HIGH-TEMP THERMOPLASTIC
POWER CONTACT MATERIAL: COPPER ALLOY
SIGNAL PIN MATERIAL: COPPER ALLOY
3. SEE ITEM 1 & 2 IN PRINT 10064183 FOR PLATING SPEC OF 51939-669 AND 51939-669LF RESPECTIVELY.
4. MANUFACTURER'S NAME, DATE CODE AND OPTIONAL P/N TO APPEAR ON
THIS SURFACE. THE P/N CAN BE OMITTED IF THERE IS NOT ENOUGH
SPACE ON THIS SURFACE.
5. PRODUCT SPECIFICATION GS-12-149.
APPLICATION SPECIFICATION BUS-20-067.
6. PACKAGED IN TRAYS.
- PCB NOTES:
7. ALL HOLE DIAMETERS ARE FINISHED HOLE SIZE.
8. MOUNTING HOLES, WHERE APPLICABLE, ARE UNPLATED.
9. $\varnothing 1.151 \pm 0.025$ DRILLED HOLES PLATED WITH
0.008 MIN SnPb OR Sn OVER 0.03
TO 0.08 Cu PLATING TO ACHIEVE
 $\varnothing 1.02 \pm 0.07$ HOLE.
10. "DIM XXX" TO BE DETERMINED BY THE CUSTOMER.
11. CONNECTOR KEEP-OUT ZONE.

spec ref	*			dr	Shi Guang	2012/04/24	<div>projection</div> <div></div>	<div>MM</div> <div></div>	size	A4	scale	1:1	
tolerance std SEE NOTE	TOLERANCES UNLESS OTHERWISE SPECIFIED			eng	Ruan MT	2016/06/01			ecn no	-			
				chr	Fancy Zhang	2016/05/31							
				appr	Pei-Ming Zheng	2016/06/01							product family
surface ✓	linear	0.X	±0.5	Amphenol FCi	title	5ACP + 24S + 5ACP RIGHT ANGLE SOLDER HEADER			dwg no	51939-669		rev	A
		0.XX	±0.25										
		0.XXX	±0.1										
	angular	0°	±2°		cat. no.	-	Product - Customer Drw			sheet 4 of 4			

Crea File - REV E - 2016-02-12