

AKPB001608DZ1R0MA2

Search by :

[Part Number](#)
[Characteristics](#)
[Cross reference](#)

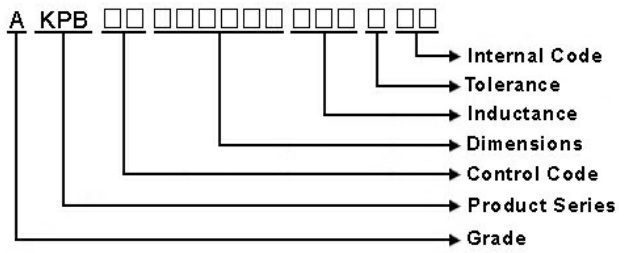
[MP](#) [Auto](#) [?](#)

Closed Magnetic Circuit Type
Multilayer

[Series Pdf](#)
[RoHSREACHCoC](#)
[ICP Report](#)

Product detail

L(mm) ±	1.6±0.15
W(mm) ±	0.8±0.15
T(mm) ±	0.8±0.15
Inductance(uH)	1
Tolerance(±%)	20
Test Frequency	3MHz,200mV
RDC(ohm)	0.2
RDC Tolerance(±%)	30
Isat(A)Max	0.2
Irms(A)Max.85°C*1	0.95
Irms(A)Max.125°C*1	0.7
Operating Temperature	-40°C~125°C



Products

Power Inductor
EMI-Common Mode Choke
EMI-Bead
RF-Signal Inductor
RF-Passives/Antennas
LAN Transformer
Resistor & Current Sensor

Applications

Automotive
Industrial
Server/DataCenter
Communication
Mobile and Tablet
Computer/Laptop
Consumer

Design Tools

Simulation Tool
Product Search Engine
E-Catalogue

About Us

Corporate Overview
Corporate Milestones
Core Technology
Certificates & Awards
Quality and Social Responsibility

Investor

News

Media Center

New Products

Events

Product Notices

Contact Us

Contact Info

Contact Form

Join Chilisin

Terms of Use

Privacy policy

Sitemap



Inductor



Resistor



Powder

Copyrights © 2018. Chilisin. All rights reserved.