

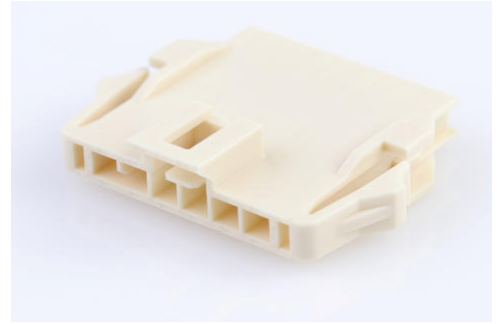
**Part Number :** [2002772206](#)

**Product Description :** Nano-Fit Plug Housing, TPA Capable, 2.50mm Pitch, Single Row, 6 Circuits, Natural, Panel Mount, Glow-Wire Capable

**Series Number :** 200277

**Status :** Active

**Product Category :** Connector Housings



---

## Documents and Resources

### Drawings

[2002772206\\_sd.pdf](#)

[2002771000-PK-000.pdf](#)

### 3D Models and Design Files

[STEP AP242](#)

[SOLIDWORKS](#)

[Creo](#)

### Specifications

[AS-105300-100-001.pdf](#)

[2014471000-PS-000.pdf](#)

[2014471000-TS-000.pdf](#)

---

## Product Environment Compliance

### Compliance

GADSL/IMDS	Not Relevant
China RoHS	 per SJ/T 11365-2006
EU ELV	Not Relevant
Low-Halogen Status	Not Low-Halogen per IEC 61249-2-21
REACH SVHC	Contains 1,1'-(Ethane-1,2-diyl)bis[pentabromobenzene] per D(2025)7771-DC (04 Feb 2026)
EU RoHS	Compliant per EU 2015/863

## Compliance Statements

- EU RoHS
- REACH SVHC
- Low-Halogen

## Industry Documents

- IPC 1752A Class C
- IPC 1752A Class D
- Molex Product Compliance Declaration
- IEC-62474
- chemSHERPA (xml)

## Substances of Interest

- PFAS

## EU RoHS Certificate of Compliance

## Additional Product Compliance Information

---

## Part Details

### General

Status	Active
Category	Connector Housings
Series	200277
Description	Nano-Fit Plug Housing, TPA Capable, 2.50mm Pitch, Single Row, 6 Circuits, Natural, Panel Mount, Glow-Wire Capable
Application	Power, Wire-to-Wire
Product Name	Nano-Fit
UPC	191130030651

### Agency

CSA	LR19980
UL	E29179

### Physical

Circuits (maximum)	6
Color - Resin	Natural
Gender	Plug
Glow-Wire Capable	Yes

Keying to Mating Part	Yes
Lock to Mating Part	Yes
Material - Resin	Nylon
Net Weight	1.069/g
Number of Rows	1
Packaging Type	Bag
Panel Mount	Yes
Pitch - Mating Interface	2.50mm
Pitch - Termination Interface	2.50mm
Polarized to Mating Part	Yes
Temperature Range - Operating	-40° to +125°C

---

## Mates With / Use With

### Mates with Part(s)

Description	Part Number
Nano-Fit Receptacle Housing, TPA Capable, 2.50mm Pitch, Single Row, 6 Circuits, Natural, Glow-Wire Capable	<u>1053072206</u>

### Use with Part(s)

Description	Part Number
Nano-Fit Male Crimp Terminals	<u>201447</u>
Nano-Fit Terminal Position Assurance (TPA) Retainers	<u>105325</u>

---

This document was generated on Apr 14, 2026