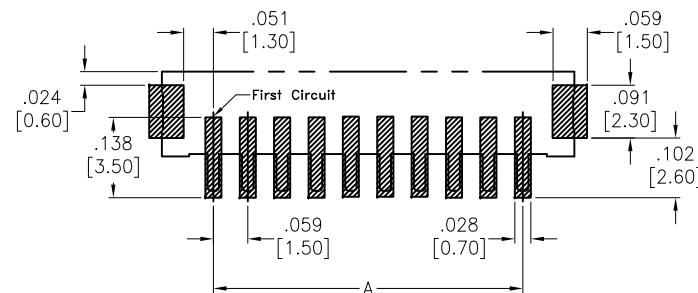
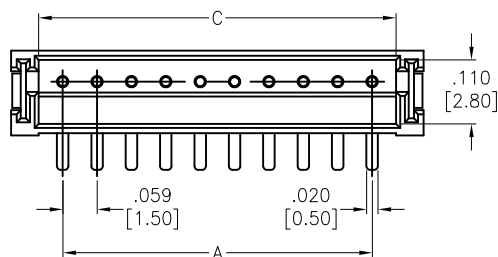


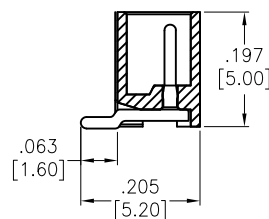
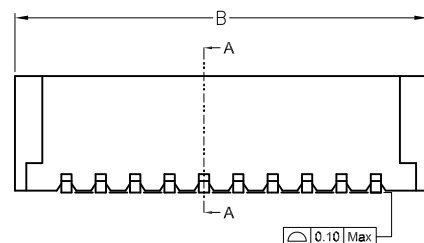
APPROVED: _____

DATE: _____ TITLE: _____

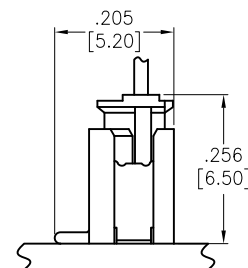
Rev	AWO #	Description	Date	Appr
-		RELEASED	10/24/17	
A		UPDATED DRAWING	11/20/17	HR/IC



RECOMMENDED PCB LAYOUT



SECTION A-A



ASSEMBLY VIEW

SPECIFICATIONS:

Material:

Insulator: Hi-temp thermoplastic, rated UL 94V-0

Insulator color: Natural

Contacts: Brass

Plating:

Tin over Nickel underplate overall

Electrical:

Voltage rating: 50 AC/DC

Current rating: 1 AC/DC

Contact resistance: 20 mohms max

Insulation resistance: 500 Mohms min

Dielectric withstanding voltage: 500 VAC for 1 minute

Temperature Rating:

-25°C to +85°C

Environmental:

Lead free, RoHS compliant.



PACKAGED ON TAPE & REEL

Positions: 02 thru 15

A = .059 [1.50] X No. of Spaces

B = .059 [1.50] X No. of Positions + .118 [3.00]

C = .059 [1.50] X No. of Positions + .024 [0.60]

UNLESS OTHERWISE SPECIFIED
ALL DIMENSIONS ARE INCHES [MM]
TOLERANCES: EXCEPT AS NOTED

INCHES	HOLES
.X ± .10	Ø.X ± .10
.XX ± .020	Ø.XX ± .015
.XXX ± .015	Ø.XXX ± .010

APPROVALS		DATE
DRAWN	AY	10/24/17
CHECKED	CC	10/24/17
APPROVED		

ADAM TECH

909 Rahway Avenue, Union, NJ 07083

Phone: 908-687-5000 Fax: 908-687-5710

TITLE
.059 [1.50] TOP ENTRY TYPE, SMT TYPE

SIZE	PART NO.	REV.
X	15SH-A-XX-TS-SMT-T/R	A
REF: S00124T	SCALE: NTS	SHEET 1 OF 1