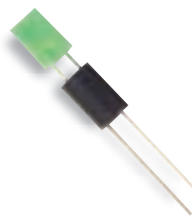


# Assembly Hardware

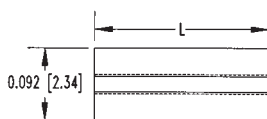
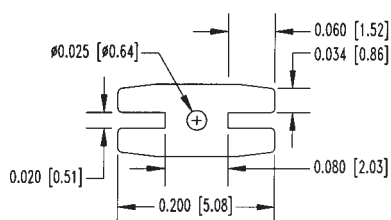
## Extruded, Self-Retaining LED



**Bivar**  
ELECTRONIC ASSEMBLY HARDWARE

- For Use with All Rectangular LEDs
- Compatible with 2 & 3 Leaded Devices
- High Temperature version available by special order.
- See page 41 for ordering information.

### ERM Extruded, Self-Retaining LED Mounts SERIES



#### Material Specifications:

Black PVC U.L. Rated 94V-0 materials.



Oxygen Rating Index: Over 28%

#### Standard Tolerances Extruded LED Mounts

Tolerances: O.D.  $\pm .005$  (.13), I.D.  $\pm .005$  (.13)

"L" Dim: .030 - .500 (0.76 - 12.7) is  $\pm .005$  (.13)

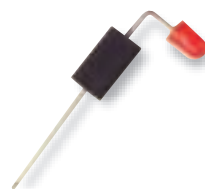
"L" Dim: .505 - .750 (12.8 - 19.1) is  $\pm .008$  (.20)

"L" Dim: .750 - 1.250 (19.2 - 21.8) is  $\pm .015$  (.38)

### ERB Extruded, Self-Retaining LED Mounts SERIES



- Standard Lengths from .030" - 1.250" (2.3 - 23.0 mm) in .005" (.127mm) increments
- Designed to mount T-1 (3mm) & T-1 $\frac{3}{4}$  (5mm) LEDs in a vertical or right angle position.



PART NO.	LED TYPE	LEAD NO.	'L'
ERB-XXX	All types	2 OR 3	.030-.900 (0.76-23.0)

**Example:** ERB-250 "L" Dimension of 0.250"

**Note:** High temperature versions available upon request.  
Minor mechanical differences may exist.

