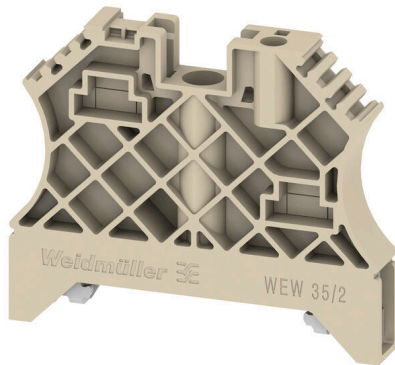


WEW 35/2**Weidmüller Interface GmbH & Co. KG**

Klingenbergstraße 26

D-32758 Detmold

Germany

www.weidmueller.com**Product image**

Weidmüller's range of products includes end brackets that guarantee a permanent, reliable mounting on the terminal rail and prevent sliding. Versions with and without screws are available. The end brackets include marking options, also for group markers, and also a test plug holder.

General ordering data

| | |
|------------|--|
| Version | End bracket, dark beige, TS 35, HB, Wemid, Width: 8 mm, 100 °C |
| Order No. | 1061200000 |
| Type | WEW 35/2 |
| GTIN (EAN) | 4008 190030230 |
| Qty. | 50 items |

WEW 35/2

Weidmüller Interface GmbH & Co. KG
 Klingenbergstraße 26
 D-32758 Detmold
 Germany

www.weidmueller.com

Technical data

Approvals

| | |
|------|---------|
| ROHS | Conform |
|------|---------|

Dimensions and weights

| | | | |
|------------|---------|-----------------|-------------|
| Depth | 46.5 mm | Depth (inches) | 1.8307 inch |
| Height | 56 mm | Height (inches) | 2.2047 inch |
| Width | 8 mm | Width (inches) | 0.315 inch |
| Net weight | 13.92 g | | |

Temperatures

| | | | |
|----------------------------------|---------------|----------------------------------|--------|
| Ambient temperature | -5 °C...40 °C | Continuous operating temp., min. | -50 °C |
| Continuous operating temp., max. | 100 °C | | |

Environmental Product Compliance

| | | | |
|--------------------------|-----------------------------|-----------------|--|
| RoHS Compliance Status | Compliant without exemption | | |
| REACH SVHC | No SVHC above 0.1 wt% | | |
| Product Carbon Footprint | Cradle to gate | 0.150 kg CO2eq. | |

Material data

| | | | |
|---------------------------|-------|--------|------------|
| Basic material | Wemid | Colour | dark beige |
| UL 94 flammability rating | HB | | |

System specifications

| | | | |
|---------|-------------------|---------------|-------|
| Version | For the terminals | Mounting rail | TS 35 |
|---------|-------------------|---------------|-------|

Additional technical data

| | | | |
|---------------------|------------------|------------------|-----------------|
| With snap-in pegs | No | Snap-on | No |
| Installation advice | Direct mounting | Type of mounting | when screwed in |
| Locking | for screw fixing | | |

Conductors for clamping (rated connection)

| | | | |
|-------------------------|------|-------------------------|--------|
| Tightening torque, max. | 1 Nm | Tightening torque, min. | 0.5 Nm |
|-------------------------|------|-------------------------|--------|

Dimensions

| | |
|--------------|-------|
| TS 35 offset | 28 mm |
|--------------|-------|

General

| | | | |
|---------------------|-----------------|---------------|-------|
| Installation advice | Direct mounting | Mounting rail | TS 35 |
|---------------------|-----------------|---------------|-------|

Classifications

| | | | |
|-------------|-------------|-------------|-------------|
| ETIM 8.0 | EC001041 | ETIM 9.0 | EC001041 |
| ETIM 10.0 | EC001041 | ECLASS 14.0 | 27-25-03-02 |
| ECLASS 15.0 | 27-25-03-02 | | |

WEW 35/2

Weidmüller Interface GmbH & Co. KG

Klingenbergstraße 26

D-32758 Detmold

Germany

www.weidmueller.com

Accessories

Blank



The Dekafix (DEK) marker is the universal marker for all conductor and plug-in connectors as well as for electronic sub-assemblies. The system is ideal for short number sequences and covers a wide range of ready-printed markers.

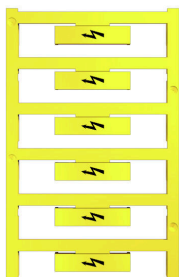
Strips for fast installation in only one work step. The printing is easy to read, rich in contrast and available in various widths.

- Large range of ready-to-use markers
 - Strips for fast installation
 - Terminal markers, suitable for all Weidmüller cable connectors
 - Available as blank MultiCard or with standard printing
- For custom printing: Please send us a file of our labeling software M-Print PRO or M-Print PRO Online (without installation) for your labeling specifications.

General ordering data

| | | |
|------------|----------------------------|--|
| Type | DEK 5/8 MC NE WS | Version |
| Order No. | 1856740000 | Dekafix, Terminal marker, 5 x 8 mm, Pitch in mm (P): 8.00 |
| GTIN (EAN) | 4032248400850 | Weidmueller, white |
| Qty. | 800 ST | |
| Type | WS 12/5 MC NE WS | Version |
| Order No. | 1609860000 | WS, Terminal marker, 12 x 5 mm, Pitch in mm (P): 5.00 Weidmueller, |
| GTIN (EAN) | 4008190203481 | Allen-Bradley, white |
| Qty. | 720 ST | |
| Type | WAD 8 MC NE WS | Version |
| Order No. | 1112940000 | Group markers, Cover, 33.3 x 8 mm, Pitch in mm (P): 8.00 WDU 4, |
| GTIN (EAN) | 4032248891825 | WEW 35/2, ZEW 35/2, white |
| Qty. | 48 ST | |

With lightning flash



The WAD connector marker is suitable for W-series terminals and for the WEW 35/2 and ZEW 35/2 end brackets. The markers are available as blank markers, with custom printing or standard print with lightning symbol. The WAD MultiCard markers are suitable for labelling with PrintJet CONNECT printers. For custom printing: Please send us a file of our labeling software M-Print PRO or M-Print PRO Online (without installation) for your labeling specifications.

General ordering data

| | | |
|------------|----------------------------|---|
| Type | WAD 8 MC B GE/SW | Version |
| Order No. | 1120470000 | Group markers, Cover, 33.3 x 8 mm, Pitch in mm (P): 8.00 WDU 4, |
| GTIN (EAN) | 4032248901289 | WEW 35/2, ZEW 35/2, yellow |
| Qty. | 48 ST | |

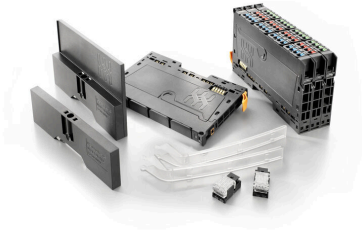
WEW 35/2

Weidmüller Interface GmbH & Co. KG
 Klingenbergstraße 26
 D-32758 Detmold
 Germany

www.weidmueller.com

Accessories

Accessories



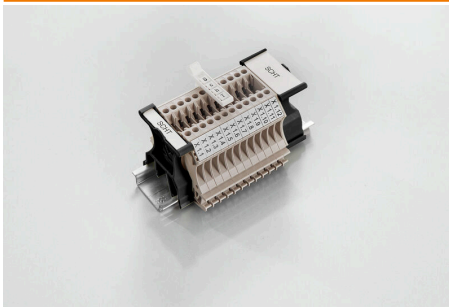
System accessory

Discover a wide range of accessories for your u-remote system - the ideal addition to make your applications even more efficient and flexible.

General ordering data

| | | | |
|------------|----------------------------|---|--|
| Type | EM 8/30 | Version | |
| Order No. | 1806120000 | EM, Terminal marker, 32.4 x 7.2 mm, Pitch in mm (P): 7.20 | |
| GTIN (EAN) | 4032248275298 | Weidmueller, Transparent | |
| Qty. | 50 ST | | |

SchT group marker carrier



The SchT 5 S group tag carriers are clipped directly onto the TS 32 mounting rail (G-rail) or the TS 35 mounting rail (top-hat rail). It is therefore possible to label the terminal strip irrespective of the terminal and the type of terminal. SchT 5 and SchT 5 S are fitted with ESO 5, STR 5 protective strips.

The SchT 7 is a hinged group tag carrier for inlay tags which enables easy access to the clamping screw. The SchT 7 is fitted with ESO 7, STR 7 protective strips or DEK 5.

Inlay tags and protective strips can be found under "Accessories".

General ordering data

| | | | |
|------------|----------------------------|---|--|
| Type | SCHT 7 | Version | |
| Order No. | 0517960000 | SCHT, Terminal marker, 39.3 x 8 mm, Pitch in mm (P): 7.00 | |
| GTIN (EAN) | 4008190001742 | Weidmueller, white | |
| Qty. | 20 ST | | |

WEW 35/2

Weidmüller Interface GmbH & Co. KG

Klingenbergstraße 26

D-32758 Detmold

Germany

Accessories

www.weidmueller.com

DEK 5/8



WS/ DEK

MultiMark terminal markers use an innovative composite material made from two components. The hard base contour of the marker snaps securely into the connector. The elastic surface finish makes the marker easy to mount. This specially punched material enables the strips to be stretched to accommodate the slight variations in spacing that tend to add up, especially with long terminal blocks. Another advantage: the excellent printability of the surface material guarantees durable and wear-resistant labelling. A print resolution of 300 dpi also produces a very legible script.

Your benefits with MultiMark

- Firm hold and durable printing
- Continuous strips save installation time
- Easy mounting thanks to an innovative composite material
- Large label field for optimal legibility
- High flexibility thanks to manufacturer independence

General ordering data

| | | | |
|------------|----------------------------|--|--|
| Type | DEK 5/8 MM WS | Version | |
| Order No. | 2007130000 | Dekafix, Terminal marker, 5 x 8 mm, Weidmueller, white | |
| GTIN (EAN) | 4050118392012 | | |
| Qty. | 500 ST | | |

WS 12/5



WS/ DEK

MultiMark terminal markers use an innovative composite material made from two components. The hard base contour of the marker snaps securely into the connector. The elastic surface finish makes the marker easy to mount. This specially punched material enables the strips to be stretched to accommodate the slight variations in spacing that tend to add up, especially with long terminal blocks. Another advantage: the excellent printability of the surface material guarantees durable and wear-resistant labelling. A print resolution of 300 dpi also produces a very legible script.

Your benefits with MultiMark

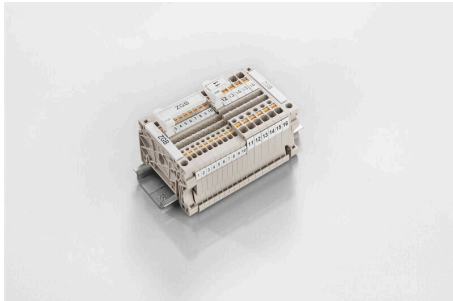
- Firm hold and durable printing
- Continuous strips save installation time
- Easy mounting thanks to an innovative composite material
- Large label field for optimal legibility
- High flexibility thanks to manufacturer independence

General ordering data

| | | | |
|------------|----------------------------|--|--|
| Type | WS 12/5 MM WS | Version | |
| Order No. | 2007190000 | WS, Terminal marker, 12 x 5 mm, Weidmueller, white | |
| GTIN (EAN) | 4050118392036 | | |
| Qty. | 800 ST | | |

Accessories

ZGB pivotable group tag holder



The ZGB 15 is a hinged group tag carrier. The tag carrier can hold the dekafix 5, WS 12/5 terminal markers or the inlay tag ESO 15.

The ZGB 30 is a hinged group tag carrier. The tag carrier can hold the dekafix 5, WS 12/5 terminal markers or the inlay tag ESO 7.

Inlay tags and protective strips can be found under "Accessories".

General ordering data

| | | |
|------------|----------------------------|---|
| Type | ZGB 30 | Version |
| Order No. | 1611930000 | Terminal markers, Terminal marker, 32 x 7 mm, Pitch in mm (P): 5.00 |
| GTIN (EAN) | 4008190002251 | Weidmueller, white |
| Qty. | 20 ST | |
| Type | ZGB 15 | Version |
| Order No. | 1636530000 | Terminal markers, Terminal marker, 15 x 7 mm, Pitch in mm (P): 5.00 |
| GTIN (EAN) | 4008190297053 | Weidmueller, white |
| Qty. | 20 ST | |