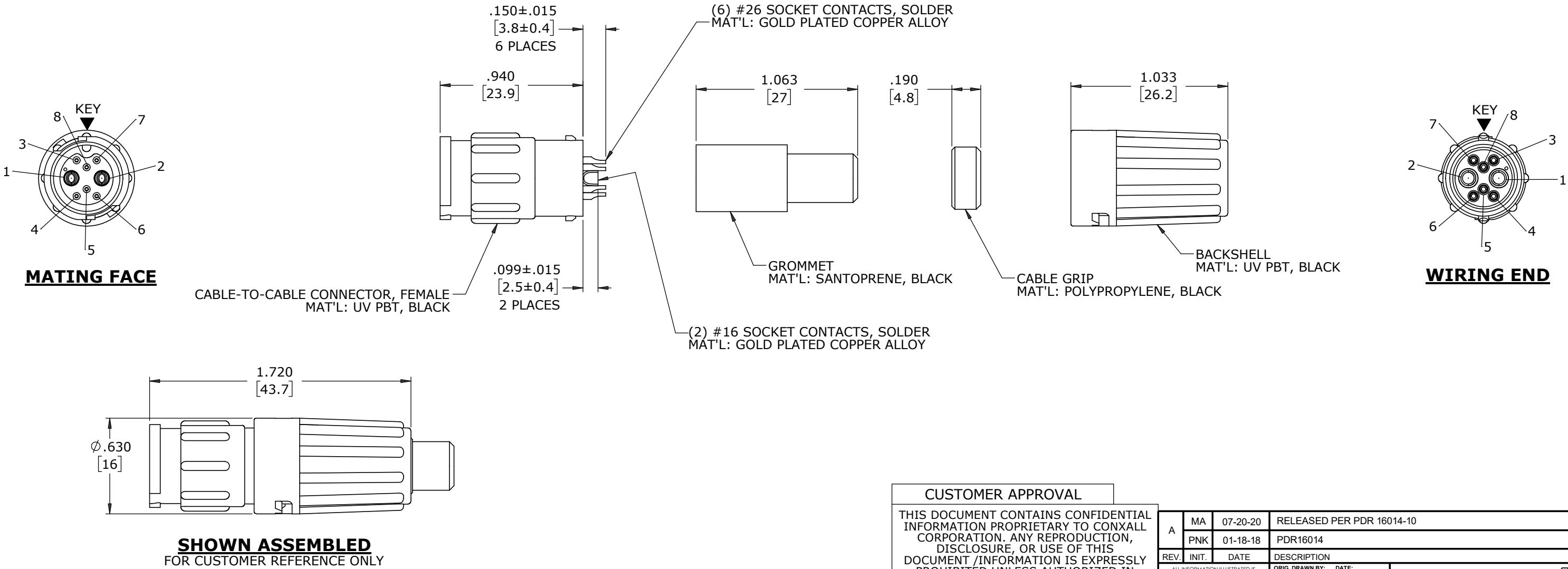


NOTES:

- 1. ALL PARTS ARE BULK PACKED.
- 2. CONTACTS ARE ASSEMBLED IN CONNECTOR WITH SOLDER CUPS FACING DIRECTLY OUTWARD
- 3. ALL DIMENSIONS ARE REFERENCE EXCEPT THOSE WITH A TOLERANCE

ASSEMBLY P/N	CONTACT QTY.		CABLE O.D. RANGE
	#16	#26	
W8A82-8SG-P-513	2	6	.13-.15 [3.3-3.8]
W8A82-8SG-P-516			.16-.18 [4.1-4.6]
W8A82-8SG-P-519			.19-.21 [4.8-5.3]
W8A82-8SG-P-522			.22-.25 [5.6-6.3]
W8A82-8SG-P-526			.25-.27 [6.4-6.9]
W8A82-8SG-P-528			.26-.285 [6.6-7.2]




CUSTOMER APPROVAL

THIS DOCUMENT CONTAINS CONFIDENTIAL INFORMATION PROPRIETARY TO CONXALL CORPORATION. ANY REPRODUCTION, DISCLOSURE, OR USE OF THIS DOCUMENT /INFORMATION IS EXPRESSLY PROHIBITED UNLESS AUTHORIZED IN WRITING BY CONXALL CORPORATION.

APPROVED BY: _____

DATE: _____

A	MA	07-20-20	RELEASED PER PDR 16014-10			
	PNK	01-18-18	PDR16014			
REV.	INIT.	DATE	DESCRIPTION			
ALL INFORMATION ILLUSTRATED IS THE PROPERTY OF "CONXALL CORPORATION." UNAUTHORIZED DUPLICATION OR DISTRIBUTION OF THIS DOCUMENT IS PROHIBITED.			ORIG. DRAWN BY: PNK		 601 E. WILDWOOD VILLA PARK, IL 60181	
			DATE: 01-18-18			
ALL UNITS ARE IN FEET, INCHES, FRACTION OF INCHES AND DECIMALS.			CHECKED BY:		APPROVED BY:	
UNLESS OTHERWISE SPECIFIED TOLERANCES: 3 PLACE DECIMALS ±0.010 ANGLES ±1° FRACTIONS ±1/16 = CRITICAL CHARACTERISTIC FLAG PER SPEC. XXXX			TITLE: CABLE-TO-CABLE ASSEMBLY 2-16 + 6-26 SOCKET CONTACTS, SOLDER INSTA-CLICK™ MINI-CON-X POWER/SIGNAL		CUSTOMER: STANDARD PRODUCT	
			SCALE NTS SIZE B SHEET 1 OF 1			
▷	= CRITICAL CHARACTERISTIC FLAG PER SPEC. XXXX		FILE: W8A82-8SG-P-5XX		PART NUMBER: W8A82-8SG-P-5XX	
			DIRECTORY: SLW		REV A	

DIMENSIONS IN BRACKETS [] ARE IN MILLIMETERS

RoHS COMPLIANT